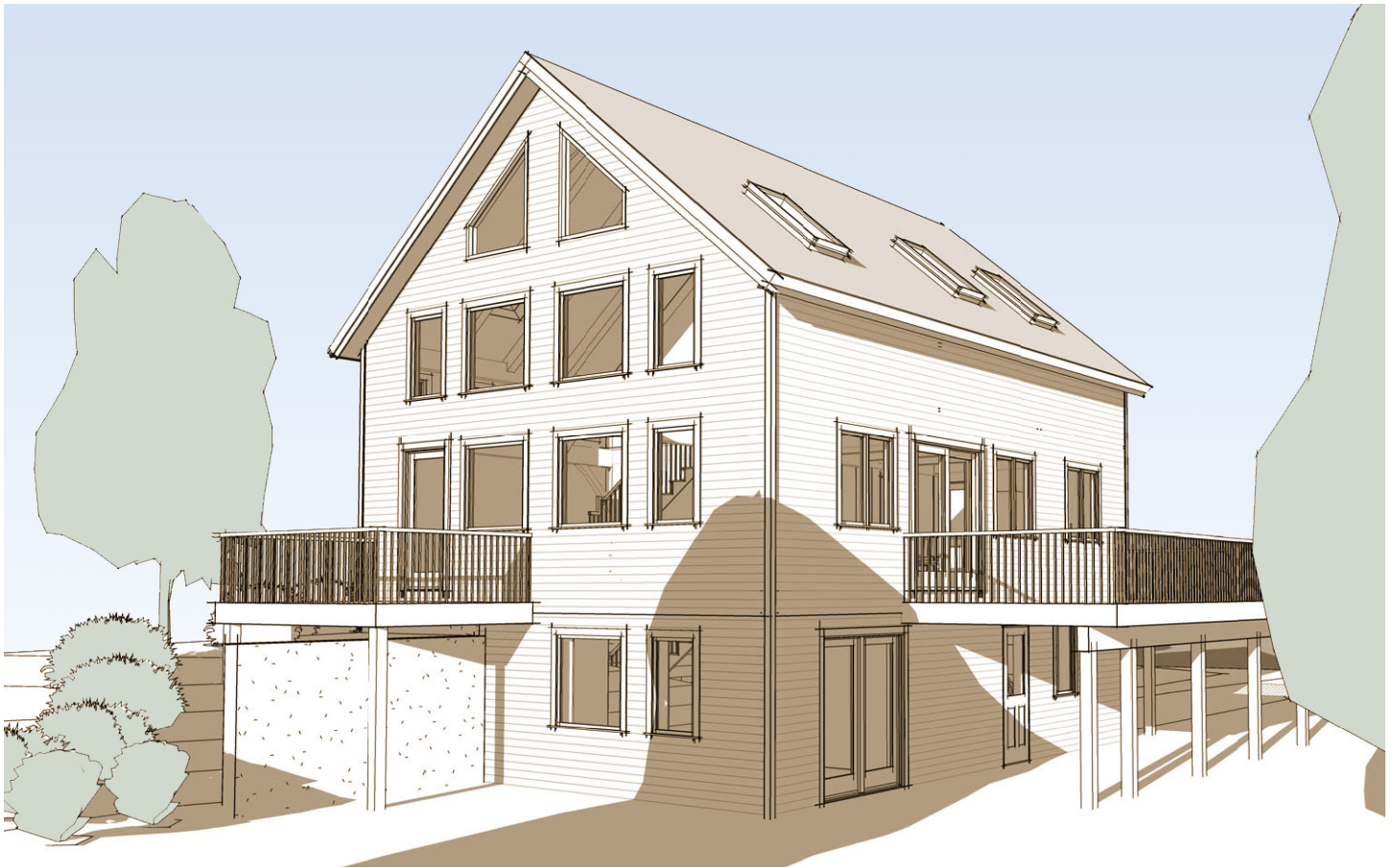


The Osgood

Wide open spaces



A soaring great room full of light is the hallmark of this home. Airy and bright, The Osgood offers three floors of flexible options, so there's no need to sacrifice the rooms you need.

There's lots of elbow room in The Osgood's common space, but plenty left for cozy bedrooms and practical needs like a mudroom.

Choose up to three bedrooms, and maybe a sleeping loft if full-house fun is in your future. Or, use the loft as an office space tailored to your work needs and featuring a spectacular view!

Eat al fresco, sunbathe, or host a cocktail party on one of two decks to get the most out of fair-weather days and nights.



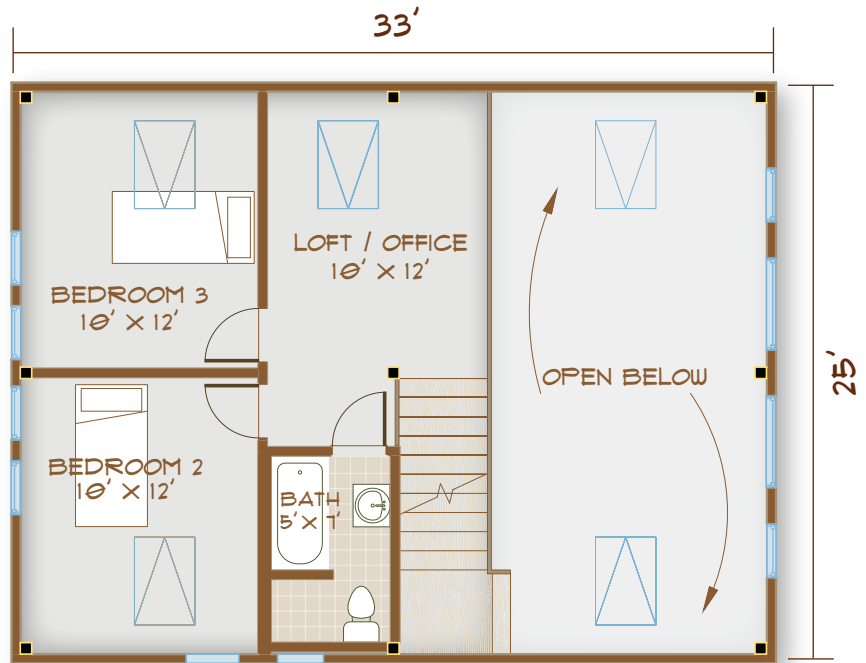
www.brookspostandbeam.com

The Osgood

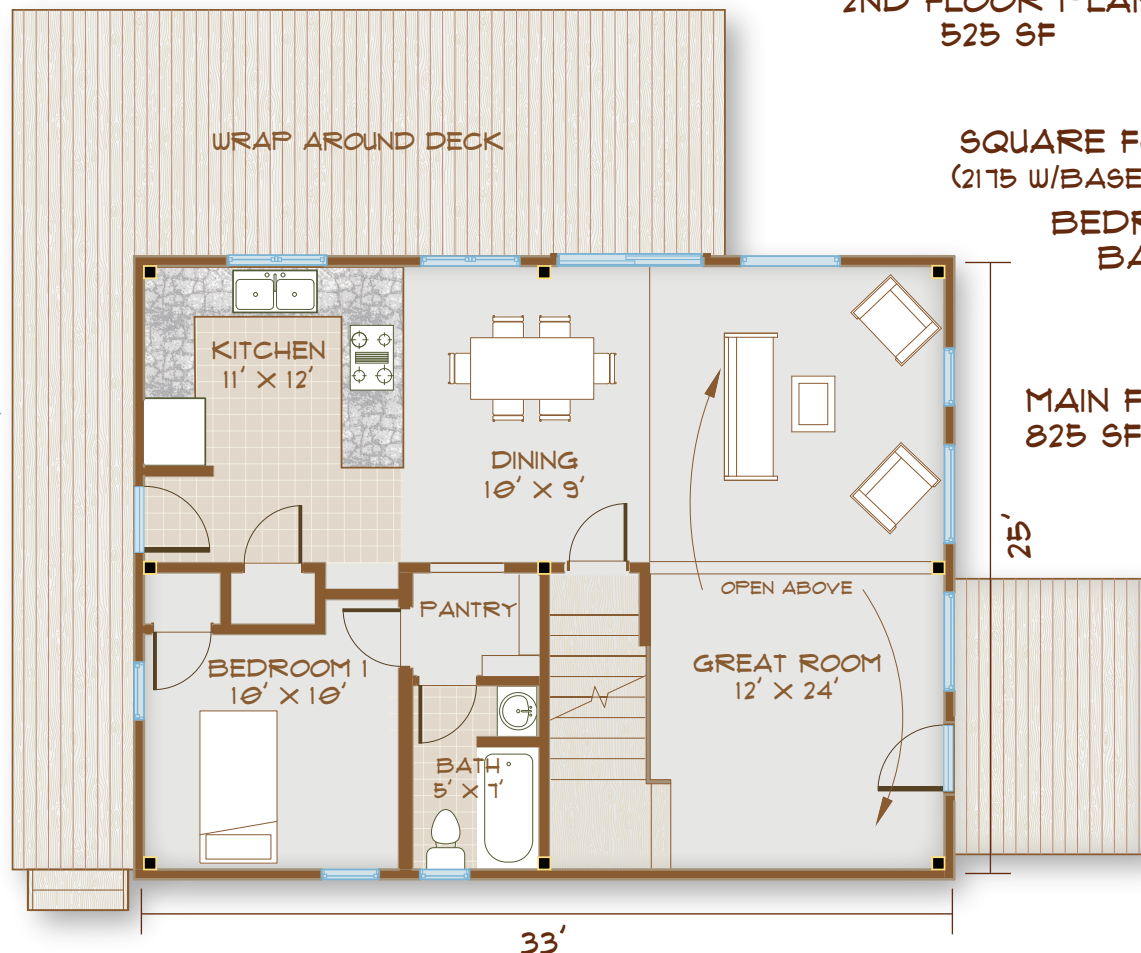
The Rooms

Play with the upstairs bedrooms: Keep the design as-is, combine two of its bedrooms to create a spacious retreat, or nix a wall and expand the loft. What else do you imagine?

The line of sight from the kitchen through the dining room and great room continues straight to the great outdoors. There's no need to miss a thing, even if you're still working on dinner.



2ND FLOOR PLAN
525 SF



SQUARE FOOTAGE: 1350
(2175 W/BASEMENT & GARAGE)

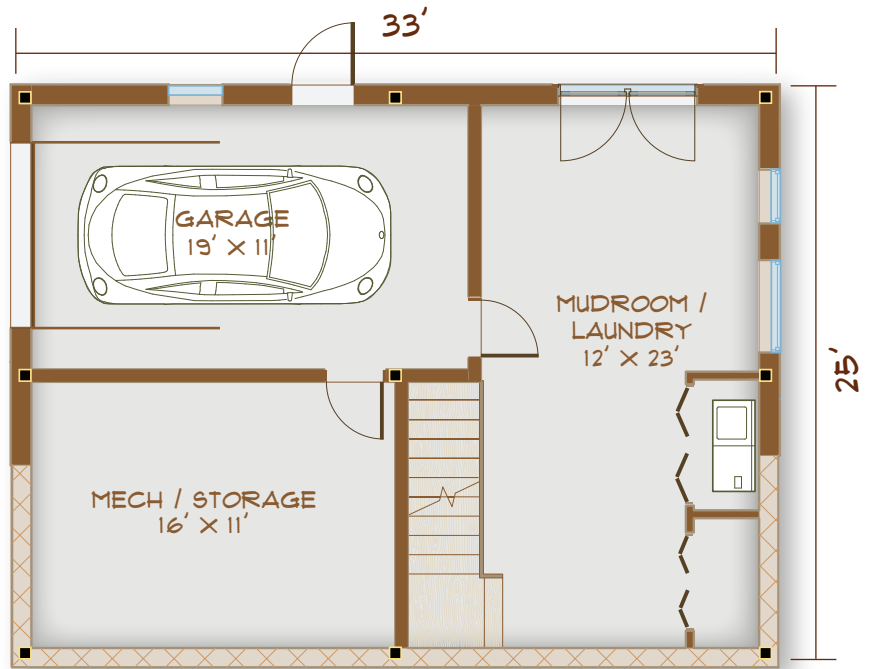
BEDROOMS: 3
BATHS: 2

MAIN FLOOR PLAN
825 SF

The Osgood

One deck could be the summer home of a grill and family table, while lounge chairs, a hot tub, or a telescope could set the scene on the other.

Laundry, muddy shoes, and mechanical systems are stowed out of sight in the walkout basement. Need more room? Draw yourself a private study, workshop, or sewing room down here.

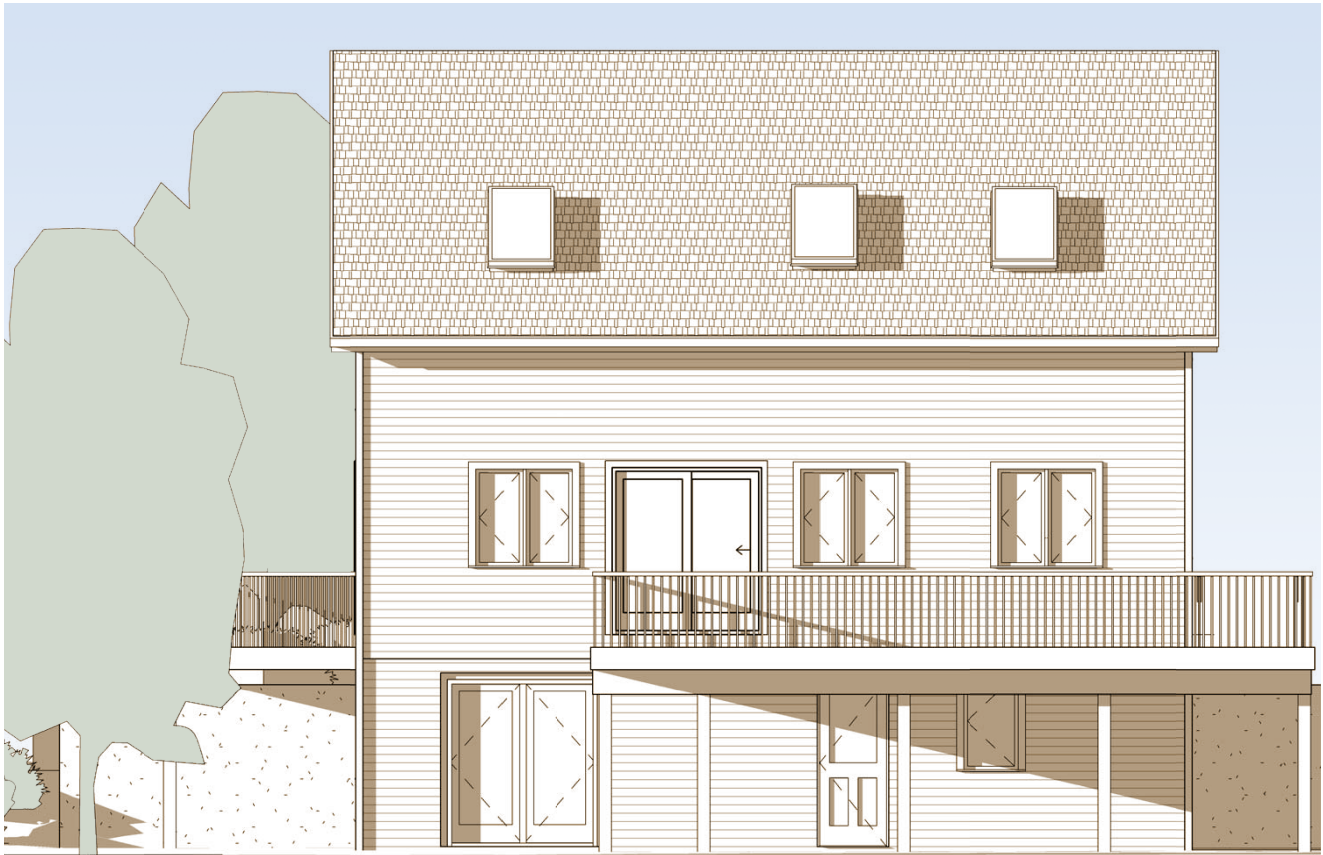


BASEMENT FLOOR PLAN
825 SF

**ELEVATION SHOWING
GARAGE ENTRY**



The Osgood



ELEVATION SHOWING WALK-OUT BASEMENT



The Osgood makes
just as much sense on a
summery Saturday night
with friends as it does
on a busy school-day
morning.

603-654-3210 • 208 Pettingill Hill Road, Lyndeborough, NH

