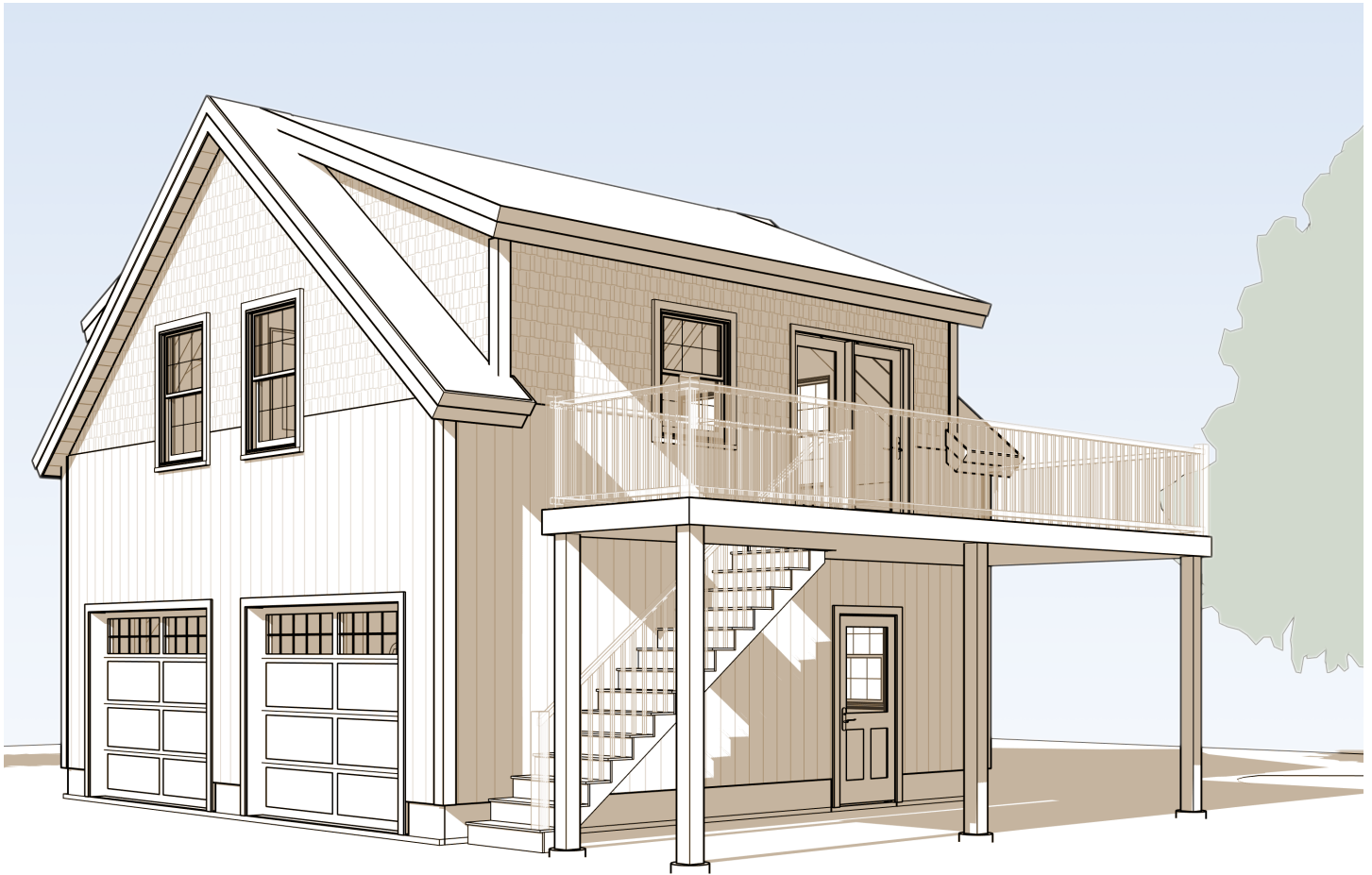


Attitash Carriage House

Utility at its most beautiful



The Attitash is a mid-sized 1-1/2 story barn or garage. Compact at 25 feet square, it is ideal for a smaller lot and modest storage needs.

But “modest” can be a relative term, because the Attitash Carriage House houses a secret gem on its second floor: Retreat to this one-bedroom apartment that also has a deck and more than 600 square feet of room inside, thanks to a dormer that also adds to

its curb appeal. Use the deck for morning coffee and evening relaxation! With a full bath and spacious living area, the Attitash Carriage House is perfect as a getaway for two, an apartment for a grown child, or a rental property.

Barns are where timber frame architecture first made its mark. Whether you need to divide your



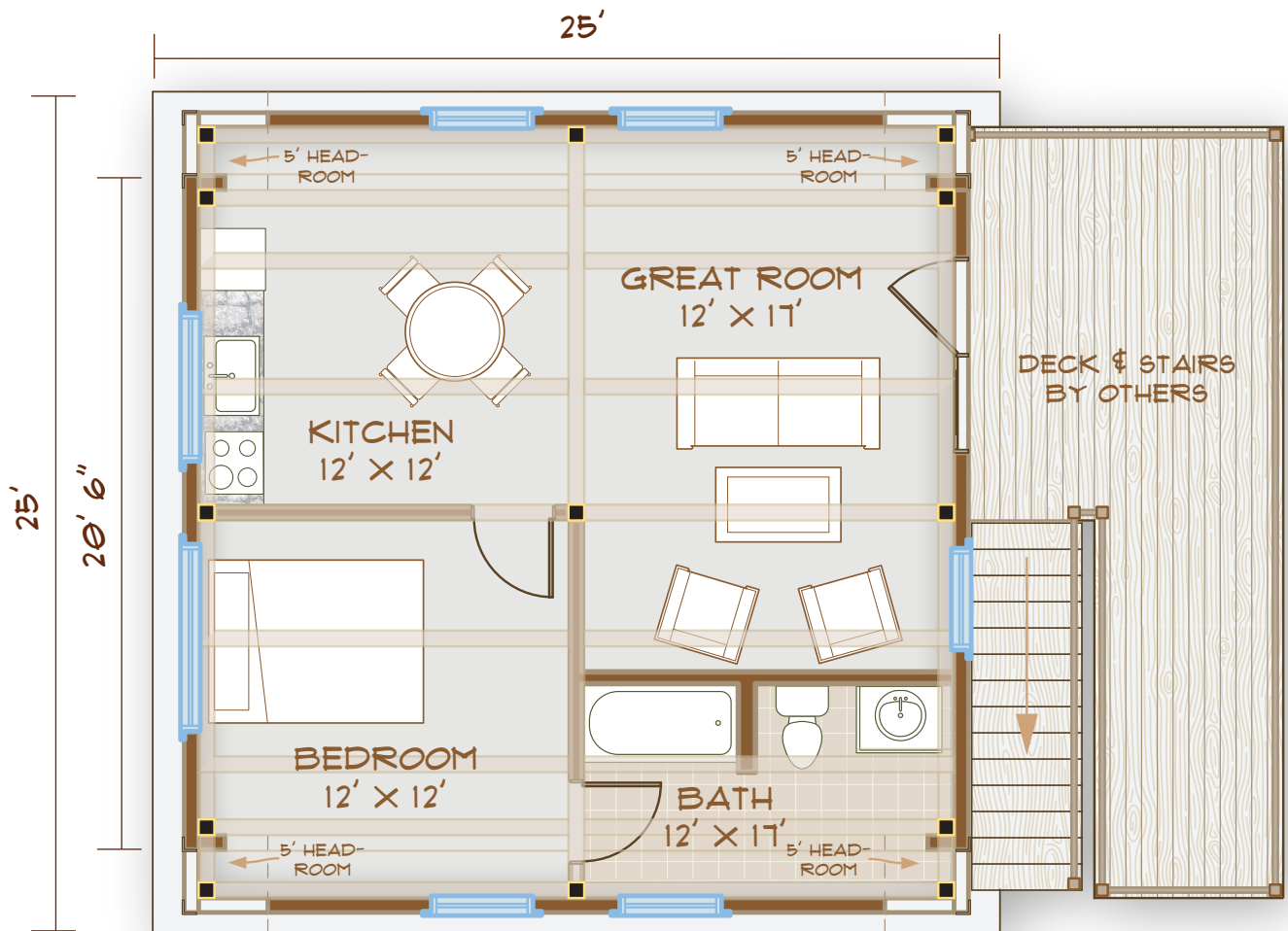
www.brookspostandbeam.com

Attitash Carriage House

barn into many stalls for livestock or leave it open to store heavy equipment, a timber frame barn can deliver; with no need for load-bearing walls, you can be flexible.

Timber frame barns are completely at home in a rural environment. They've been a part of the

New England geography for centuries, after all! Brooks Post & Beam barns and garages are made primarily of native New Hampshire lumber; the walls can be composed of a simple, affordable layer of shiplap boards, just as they were 100 years ago!



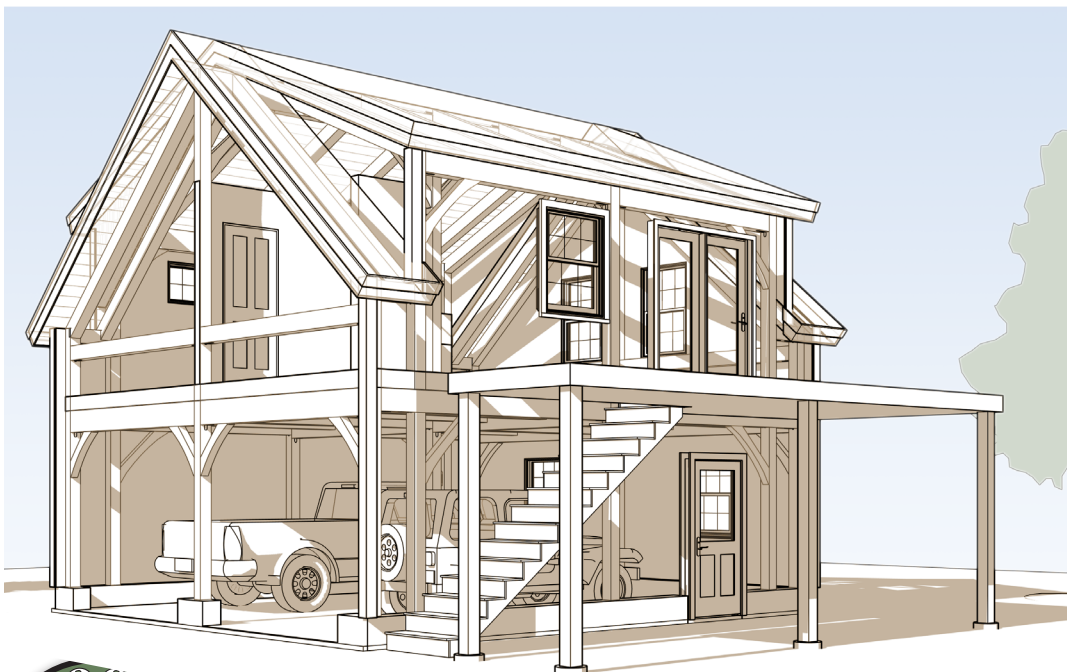
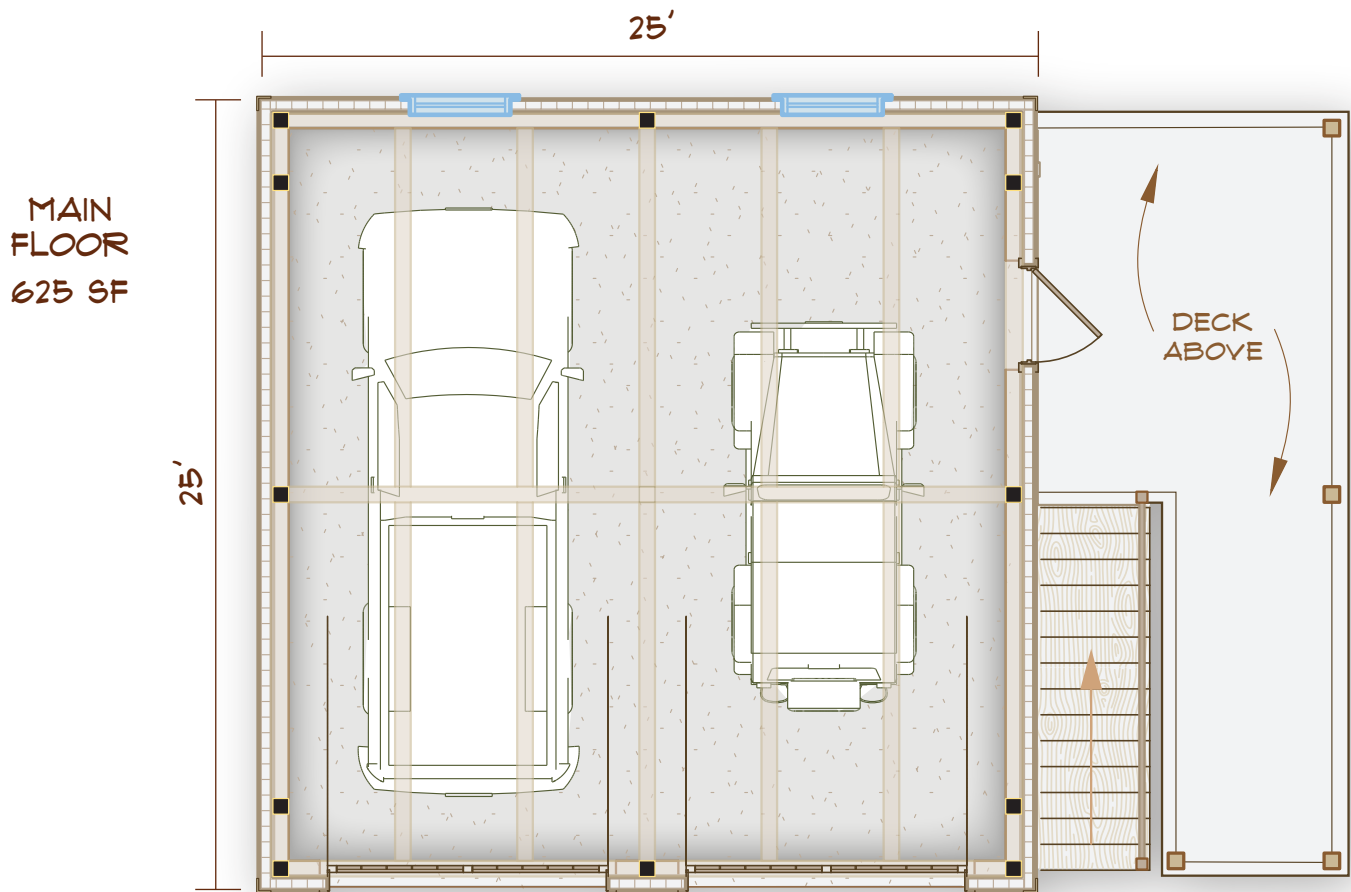
TOTAL 1250 SF
BEDROOMS: 1
BATHS: 1

LOFT
FLOOR PLAN
625 SF

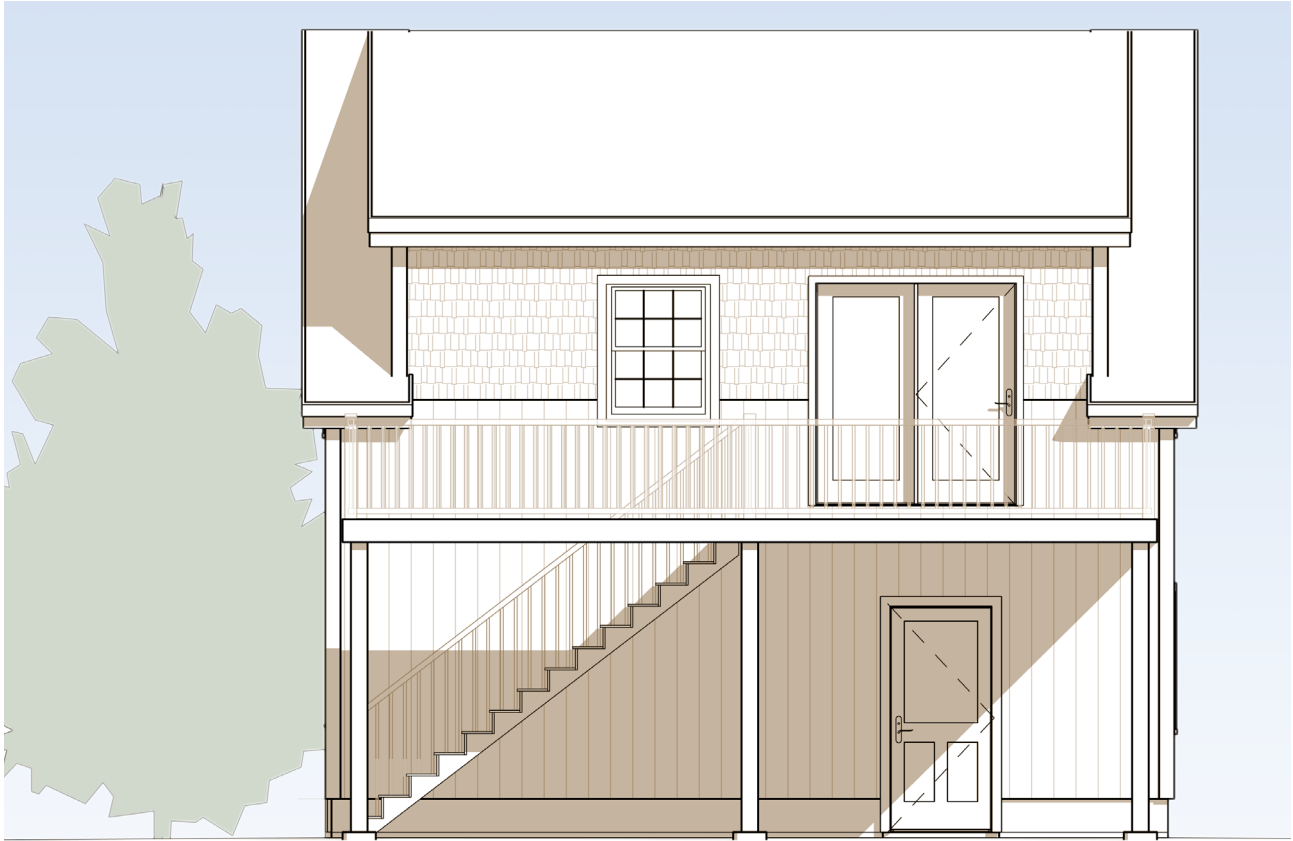
603-654-3210 • 208 Pettingill Hill Road, Lyndeborough, NH



Attitash Carriage House



Attitash Carriage House



**Attitash
Carriage House:
Utility at its most
beautiful.**

603-654-3210 • 208 Pettingill Hill Road, Lyndeborough, NH

