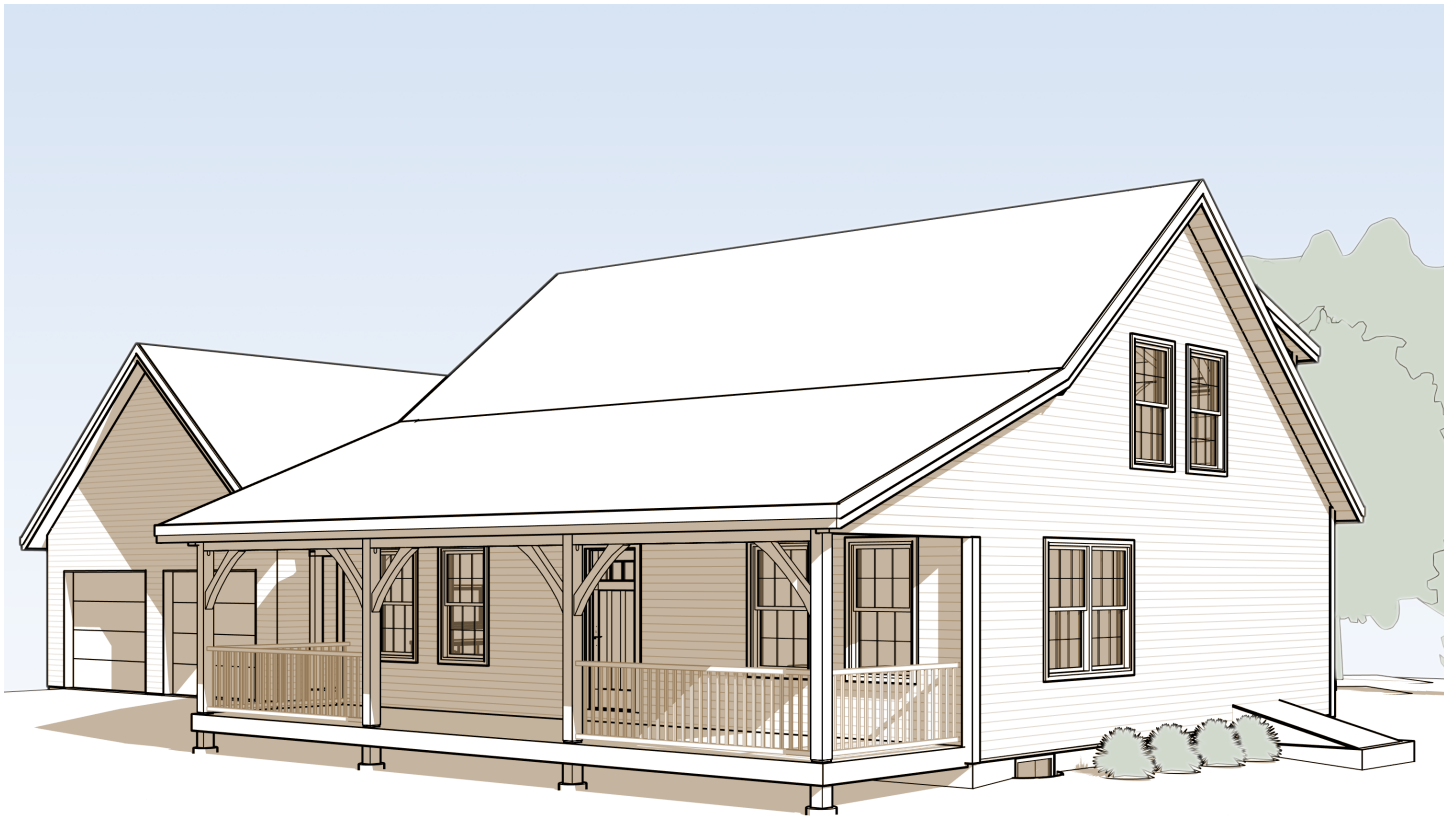


Barnstead

Stretch out a little



There's nothing like a farmer's porch to watch the world go by. Unless you count capitalizing on a gorgeous view from the back of the house – that's also a great feature! With The Barnstead, you don't have to choose. A porch runs the full length of the front of this home to allow for people watching, morning coffee, and outdoor entertaining. The shed dormer across the back of the second floor provides an opportunity to showcase mountains, a lake, or a particularly attractive skyline.

No need to sacrifice comfort when opting for a home that blends unobtrusively into the landscape. The Barnstead design offers almost 1,700 sq feet of living space, but versatility is built in. Forgo the cathedral ceiling over the living room and the living space could jump to nearly 2,200 sq feet.

If you like The Strafford design but want more space on the second floor, this might be the home for you.



www.brookspostandbeam.com

Barnstead

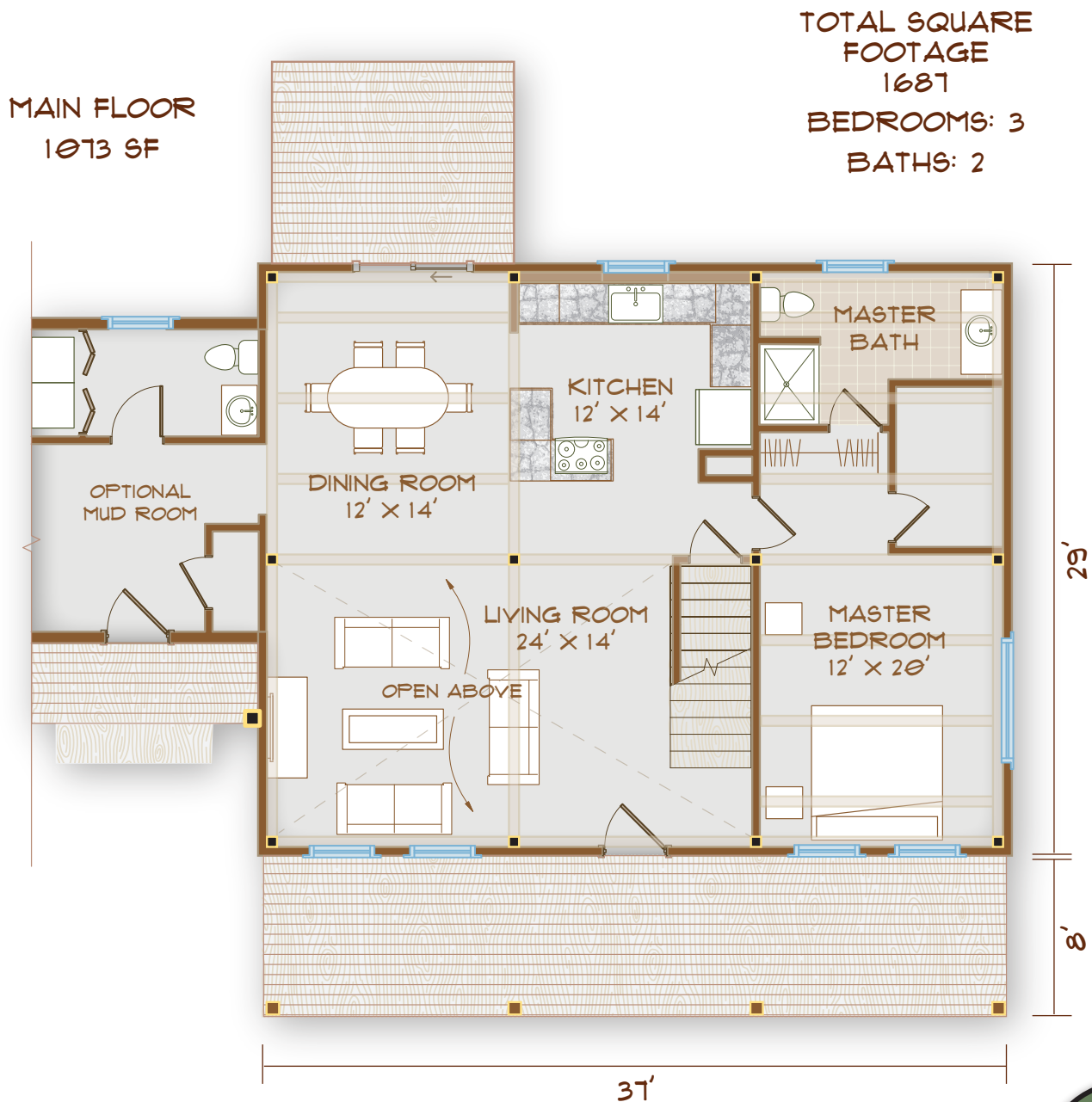
The Rooms

The first floor of the Barnstead is wide open, featuring one large space including kitchen, dining, and living room areas.

A first-floor bedroom suite means The Barnstead can be comfortable for years to come. Add a door

here for private access to the front porch and enjoy views from front to back.

There's also a mudroom option that could add a buffer between you and the outside world (as well as another bathroom).

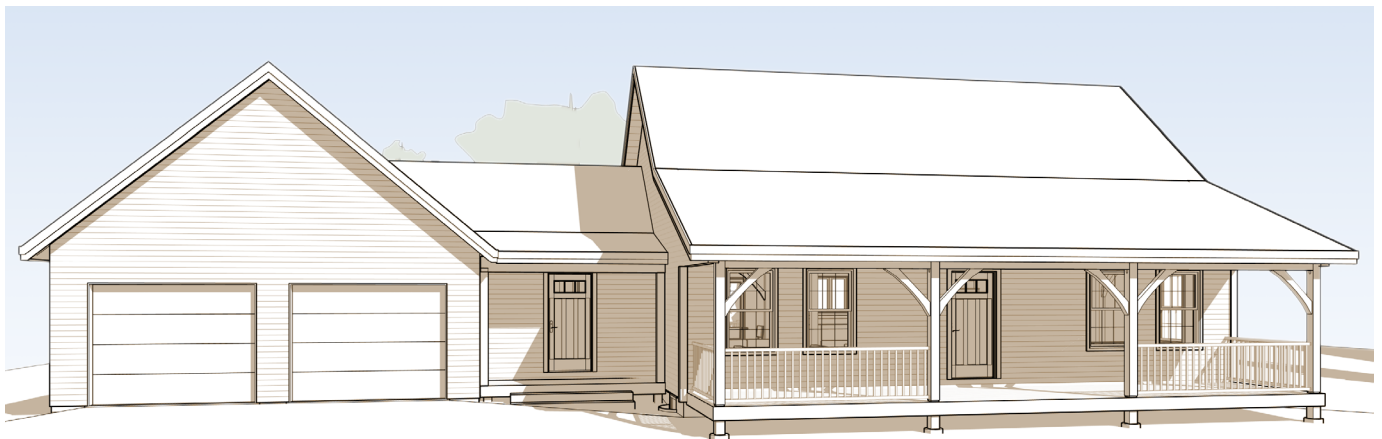
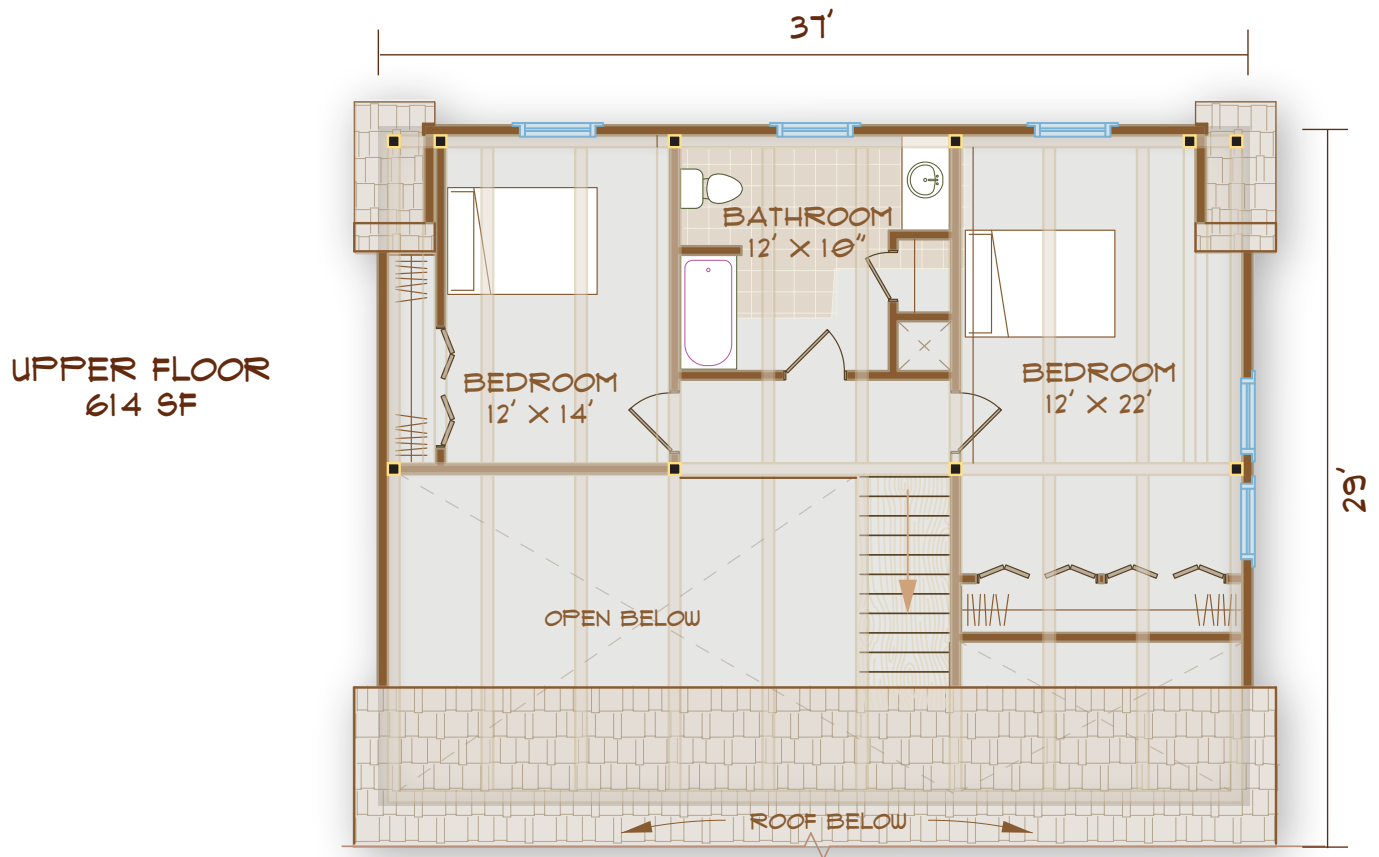


Barnstead

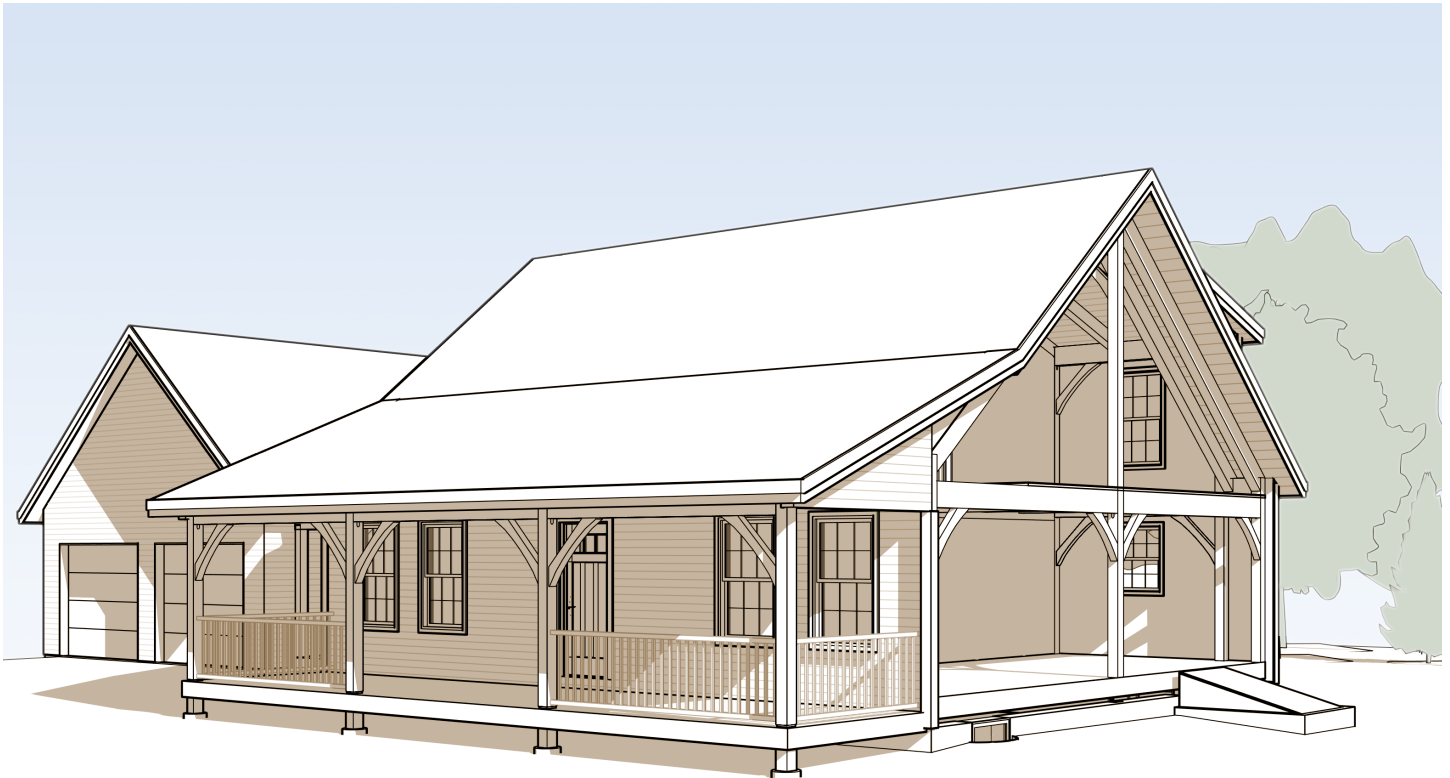
Options abound on the second floor. Here is where the shed dormer adds space, headroom, and windows – one of the bedrooms is 12' x 22"! How much room do you need? A fourth bedroom or

loft area could be added in the place of the vaulted ceiling shown here.

Thanks to the dormer, the second-floor bathroom is also airy and bright.



Barnstead



FRAME VIEW



SIDE VIEW

The Barnstead:
Stretch out a little

603-654-3210 • 208 Pettingill Hill Road, Lyndeborough, NH

