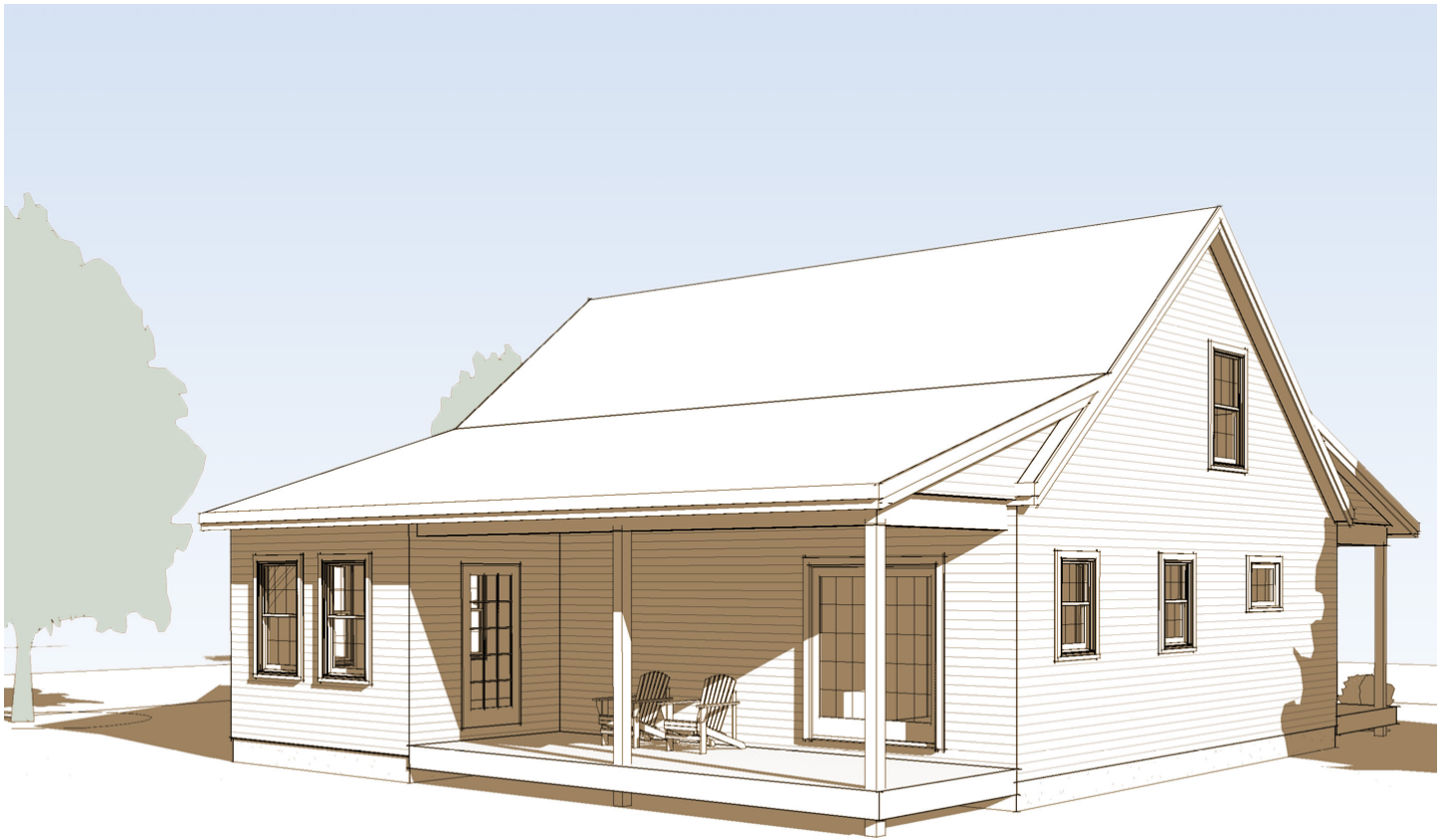


Bennington Hybrid

Bragging rights on a budget



Timber frame architecture offers durability, beauty, and versatility. “Stick-built” construction is more common, and the initial investment is often lower. Future homeowners with a smaller budget might consider giving up on their timber frame dream home because upfront costs might be higher.

But, with our Hybrid designs, there is a third way. For low maintenance, high efficiency, and great aesthetics, here you can opt for a single-story Brooks

timber frame. Then, enjoy significant savings by topping it with a quality, stick-framed upper floor.

That’s what we did with the Bennington Hybrid: The first floor is a sturdy Brooks frame clad in super-efficient SIP wall panels, but the plans call for a conventionally built second floor. The first has the look and flexibility timber frames are famous for; the second takes a chunk off the price tag. Win-win!



www.brookspostandbeam.com

Bennington Hybrid

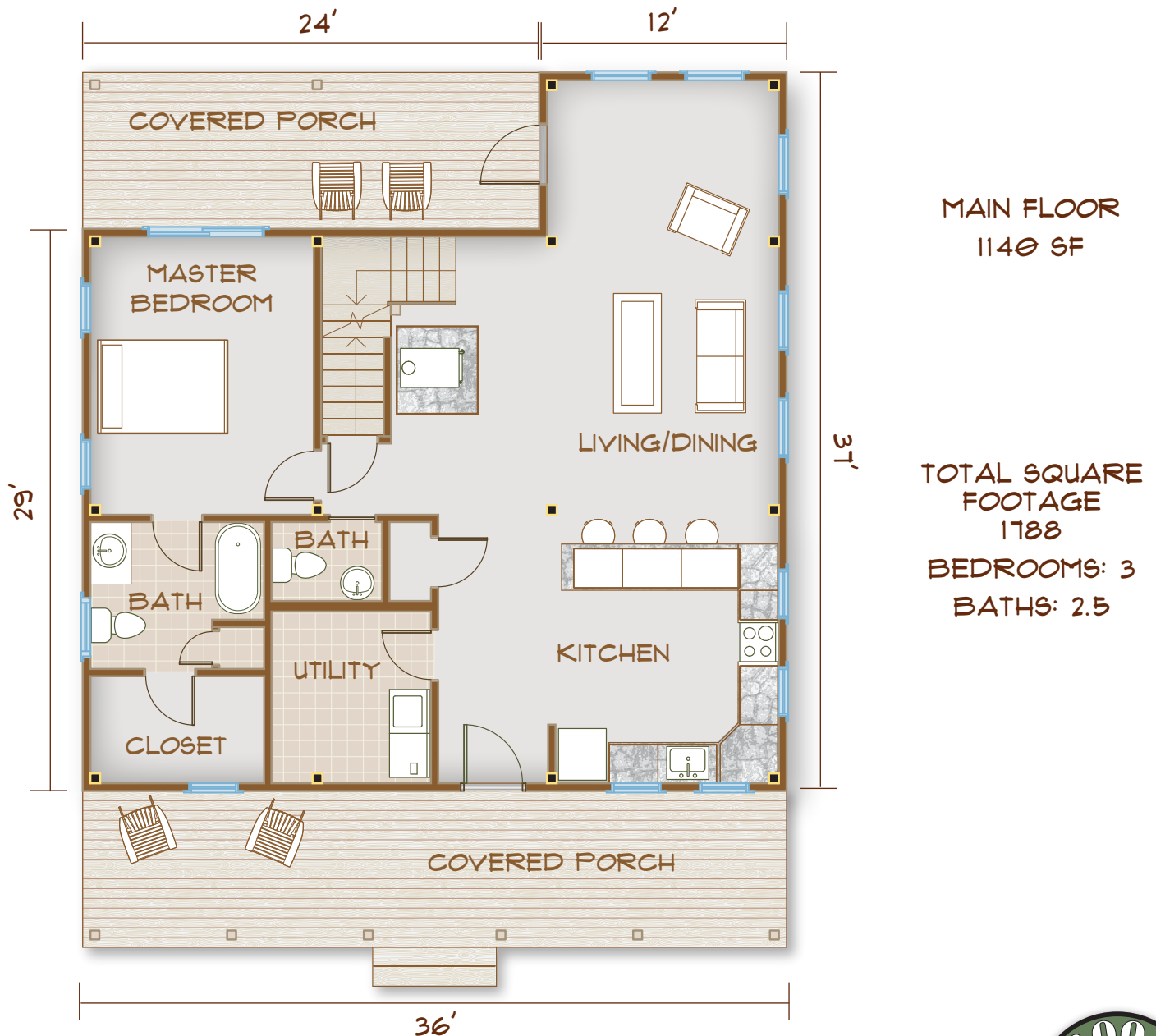
The Rooms

The first floor flaunts that trademark timber frame open floor plan, dominated by a large, open common space comprised of the living room, dining area, and kitchen.

A first-floor master suite means The Bennington can accommodate your needs as your life changes. If

single-floor living makes sense in your future, it's got you covered!

Two porches mean that – sunset or sunrise – there's always a payoff. Whether it's coffee or cocktails, you need only step outside.

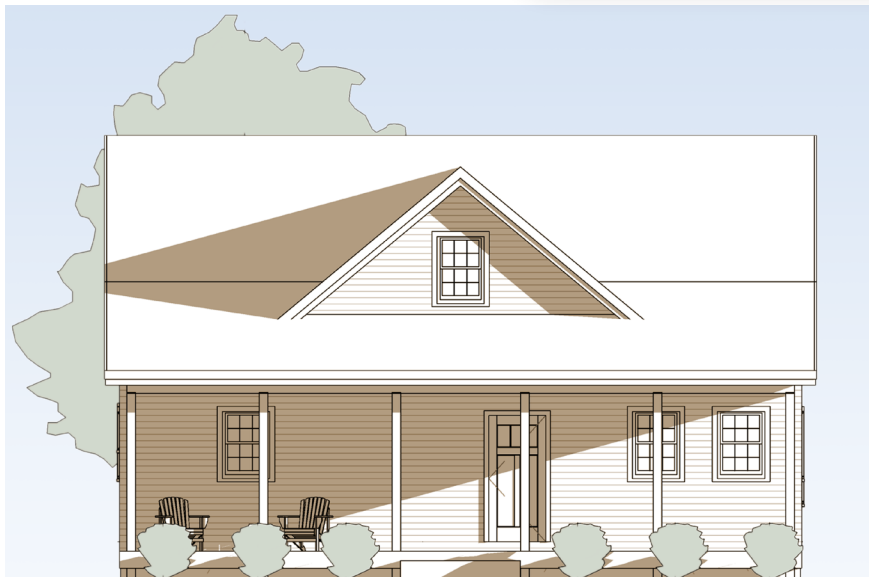
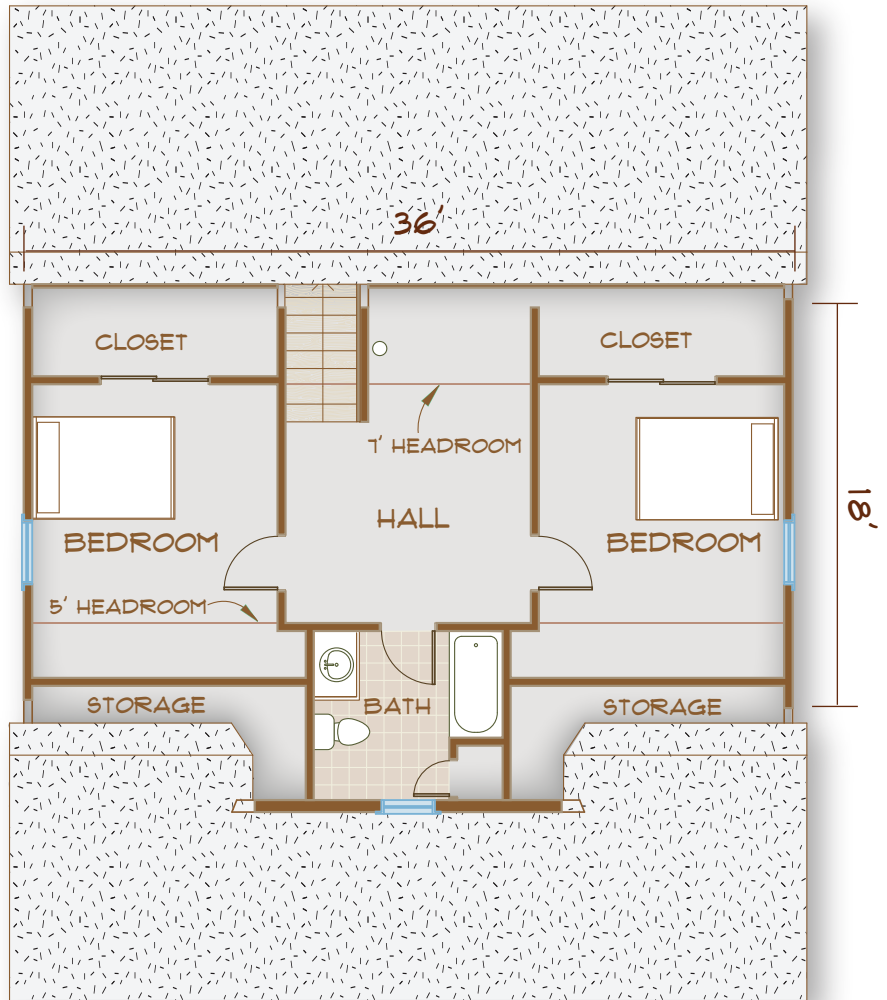


Bennington Hybrid

Crossing from timber frame into stick-built construction as you climb the stairs, you'll notice... nothing. The transition between the two building styles is seamless.

A large central hallway opens onto two bedrooms and a full bath. Each bedroom has its own large closet, and the bathroom is roomy and bright.

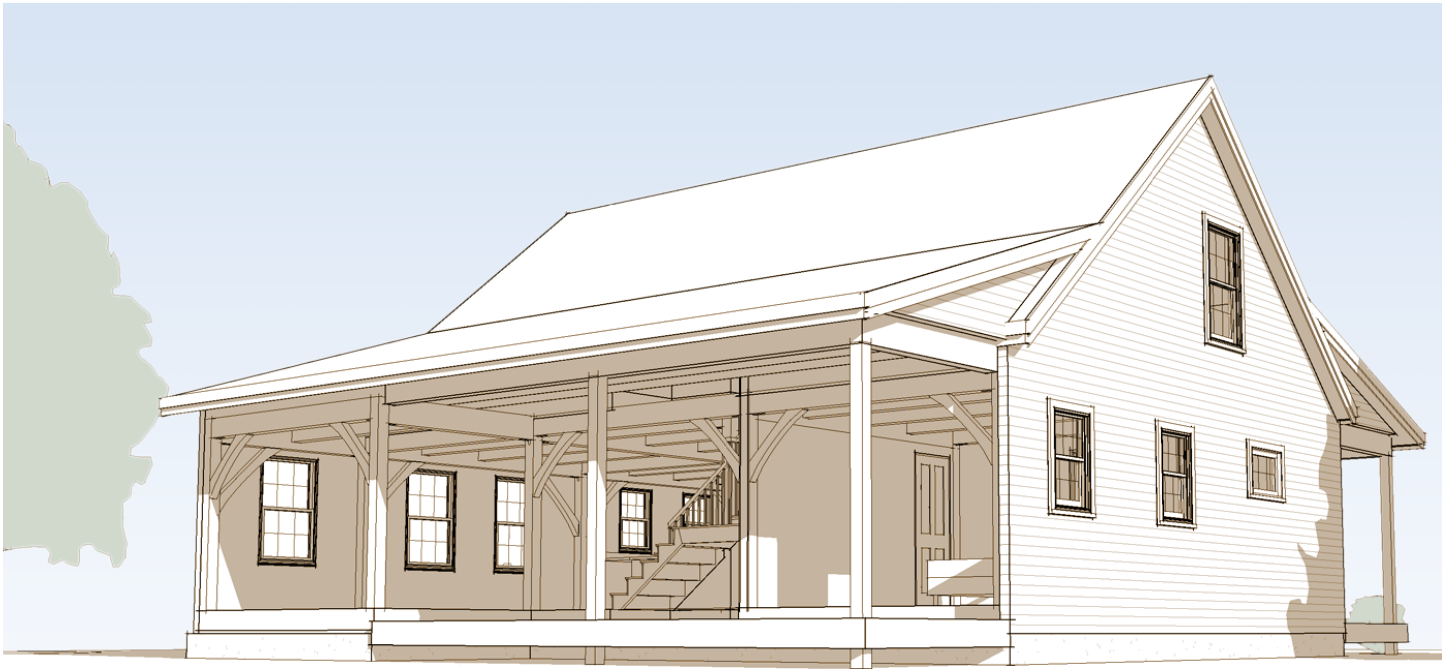
UPPER FLOOR
648 SF



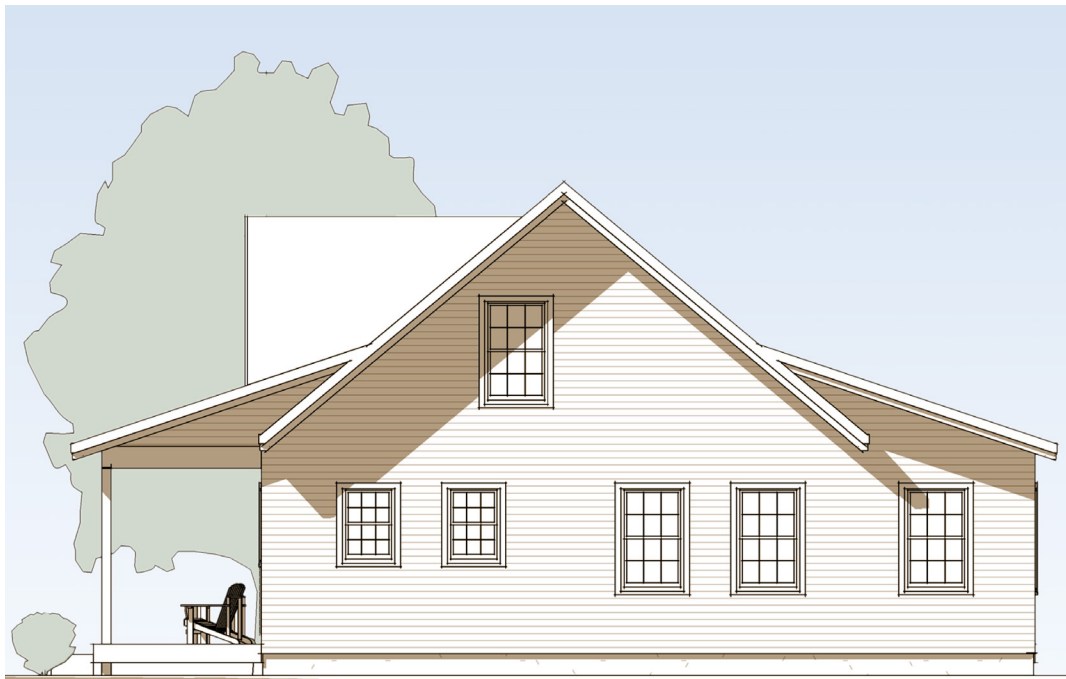
FRONT
ELEVATION



Bennington Hybrid



FRAME VIEW



SIDE VIEW

**The Bennington
Hybrid:
Bragging rights
on a budget**

603-654-3210 • 208 Pettingill Hill Road, Lyndeborough, NH

