

# Essex Barn

## Historic Good Taste



This beautiful barn was originally a reproduction designed to replace the original in Essex, MA. It's being used as an antique and home furnishings shop, but don't let that stop you from using it to keep your farm equipment, vehicles, or livestock indoors! At 48' by 38', this is one of our larger barns, offering a 1,622-square-foot second floor for office or play

space. Or, convert the upper floor into a residence larger than many homes!

\*\*\*

Barns are where timber frame architecture first made its mark. Whether you need to divide your barn into many stalls for livestock or leave it open to



[www.brookspostandbeam.com](http://www.brookspostandbeam.com)

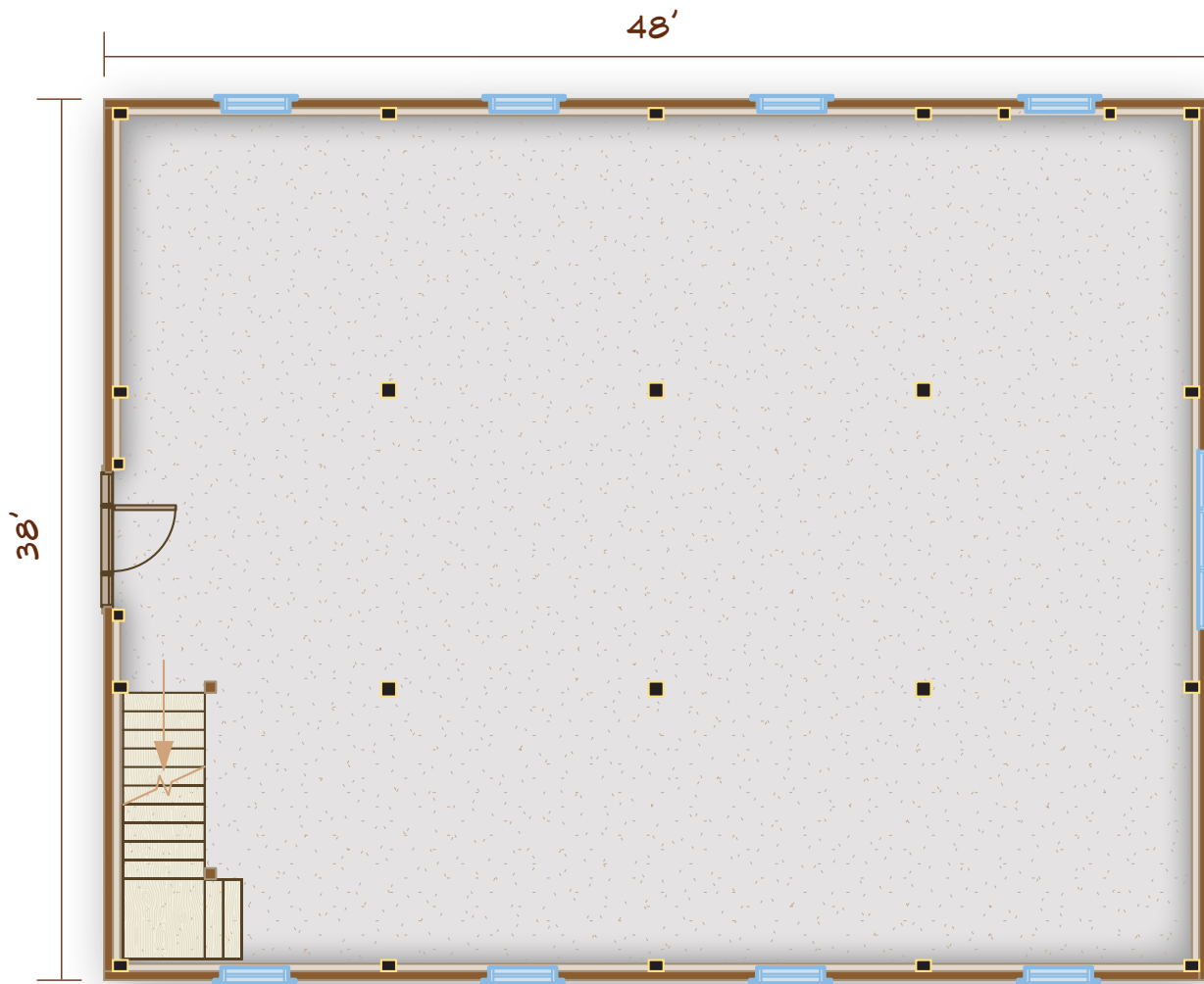
# Essex Barn

store heavy equipment, a timber frame barn can deliver; with no need for load-bearing walls, you can be flexible.

Timber frame barns are completely at home in a rural environment. They've been a part of the New England geography for centuries, after all! Brooks Post & Beam barns and garages are made primarily of native New Hampshire lumber; the walls can be composed of a simple, affordable

layer of shiplap boards, just as they were 100 years ago!

And while any timber frame structure will allow for flexibility, a barn can be even more versatile and responsive over time as your needs change. Just move your partitions if you decide you want to turn your horse stalls into a parking area, apartment or art studio!



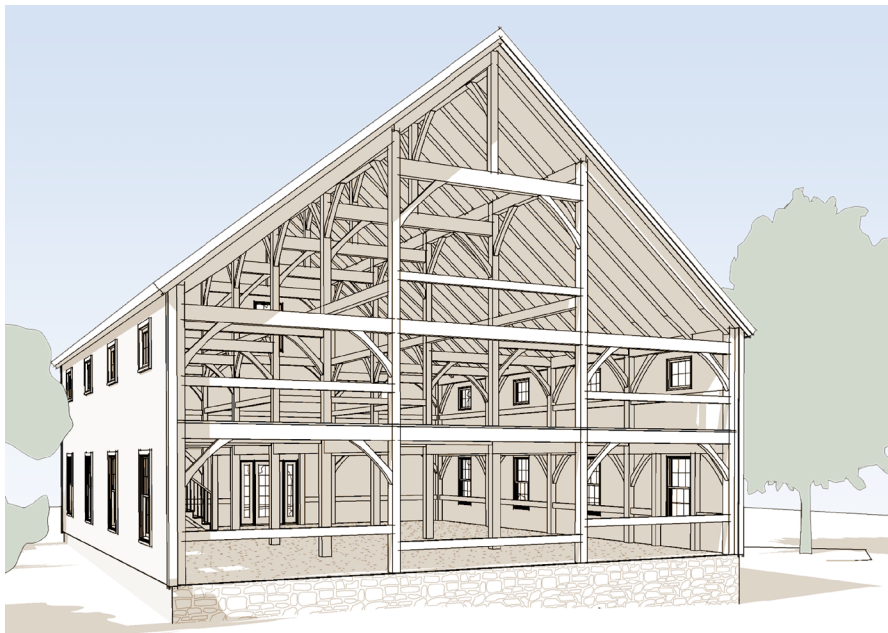
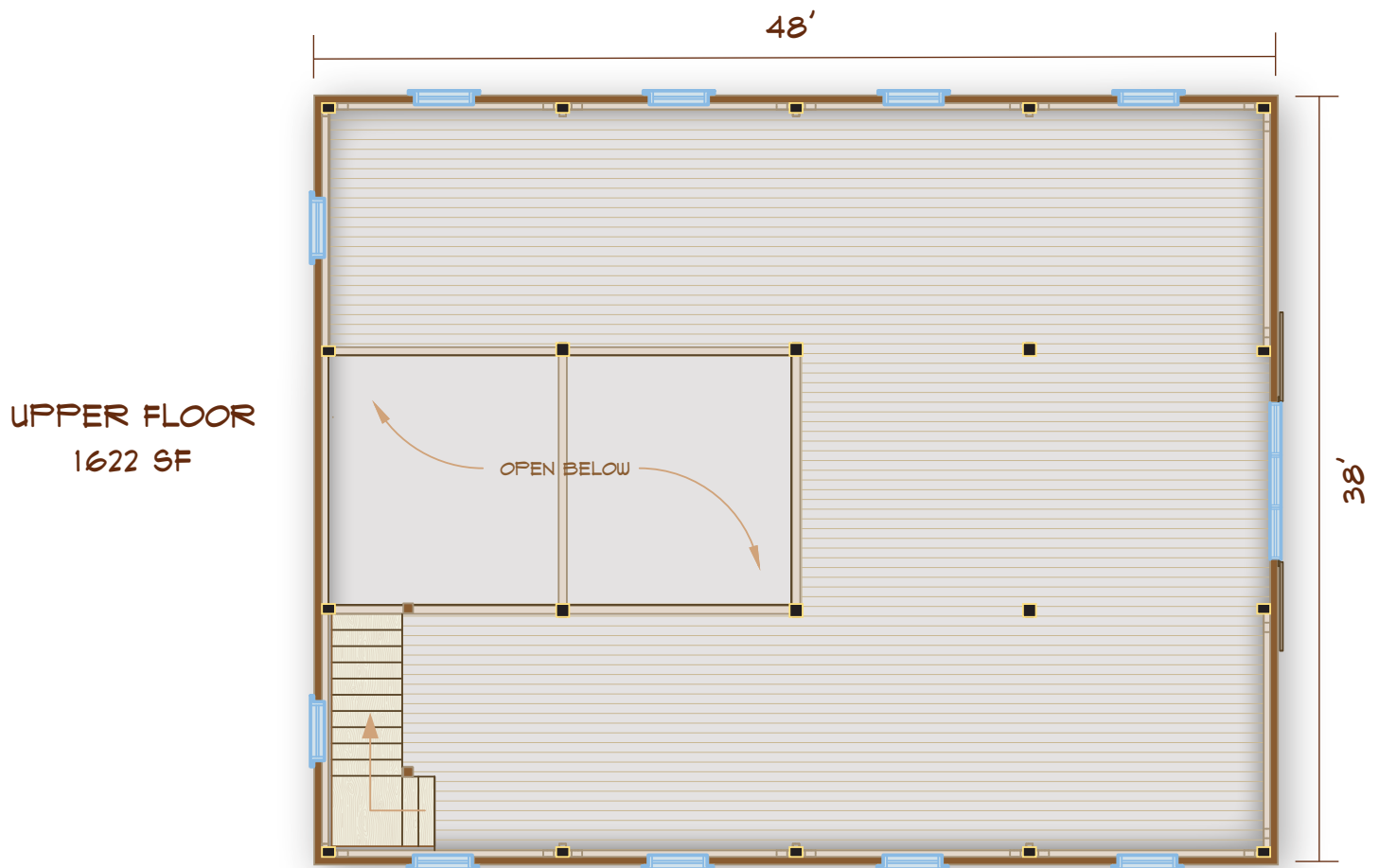
MAIN FLOOR  
1950 SF

TOTAL  
3572 SF

603-654-3210 • 208 Pettingill Hill Road, Lyndeborough, NH



# Essex Barn



INTERIOR  
FRAME VIEW



# Essex Barn



FRONT ELEVATION



Brooks  
Post & Beam barns:  
Where it all started.

603-654-3210 • 208 Pettingill Hill Road, Lyndeborough, NH

