

# The Greenfield

Make a grand impression



First impressions mean a lot. From the moment it first comes into view, The Greenfield tells a story of striking solidity. It's clear this home stakes a claim to the land it stands on and nurtures those who live comfortably inside.

The Greenfield is deceptively imposing. Yes, it's large enough to host a holiday party for a small company in its wide-open common area, and grand enough that its double-door front entry flanked by wide

sidelights make perfect aesthetic sense. But what looks like a tasteful extension of an already grand home is actually a sizeable garage that can house your cars, lawn equipment, tools, and maybe a home office upstairs!

What does that leave? Surrounding the sky-high living/dining area are three spacious bedrooms – including a master suite on the first floor.



[www.brookspostandbeam.com](http://www.brookspostandbeam.com)

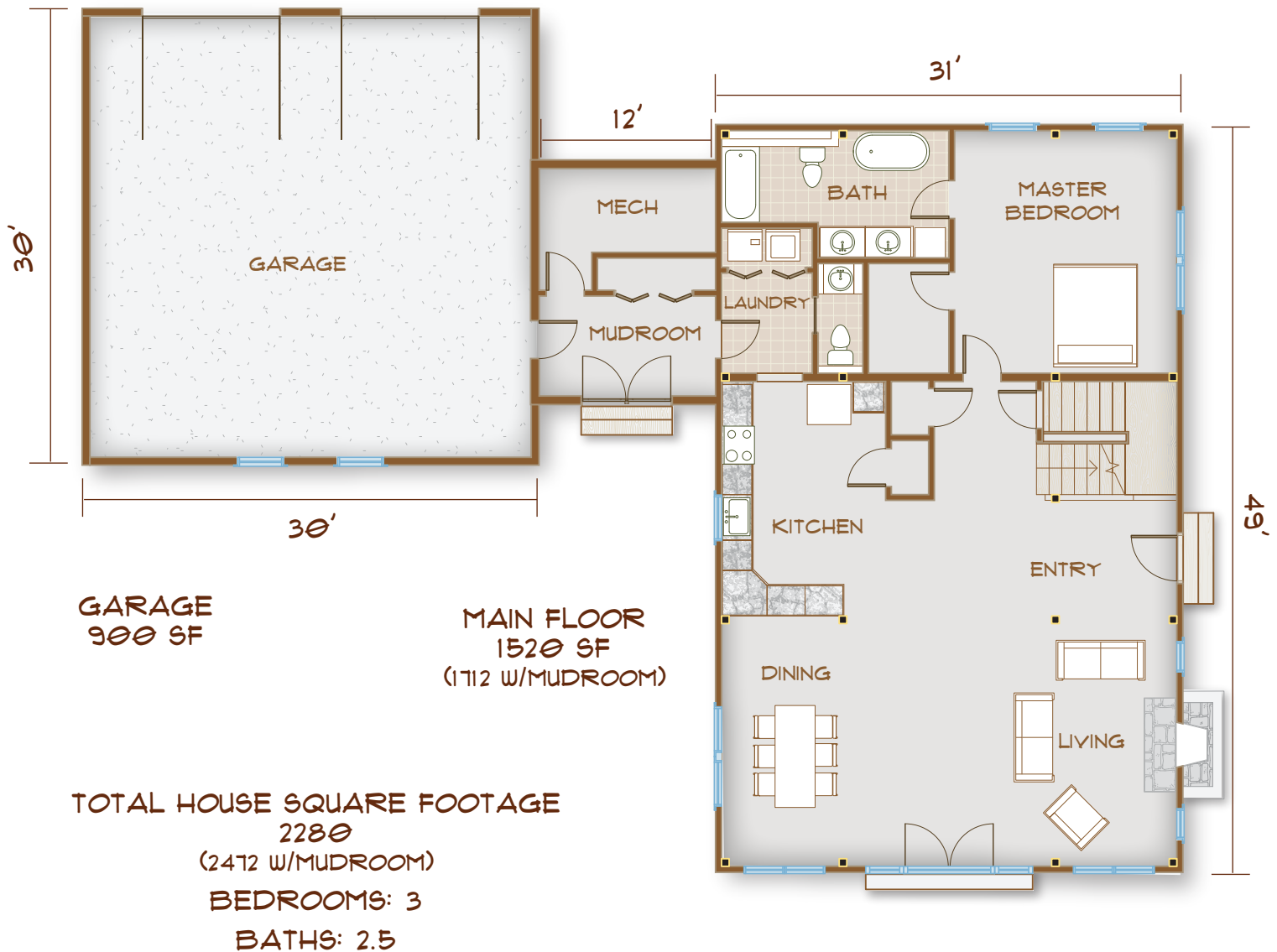
# The Greenfield

## The Rooms

The dining and living area can be defined by walls or left wide open to take advantage of the abundant common space. Lounge by the fire while keeping tabs on the action in the kitchen, or watch the kids play nearby as the adults relax after a big family dinner.

The oft-requested first floor master bedroom suite is set apart at the back of the house, complete with a spacious bathroom and walk-in closet.

Opting for the mudroom means accessing the garage without going outside, plus room for mechanical systems and dirty boots on the first floor! Laundry and a half bath off this side entrance are conveniently close to the kitchen.



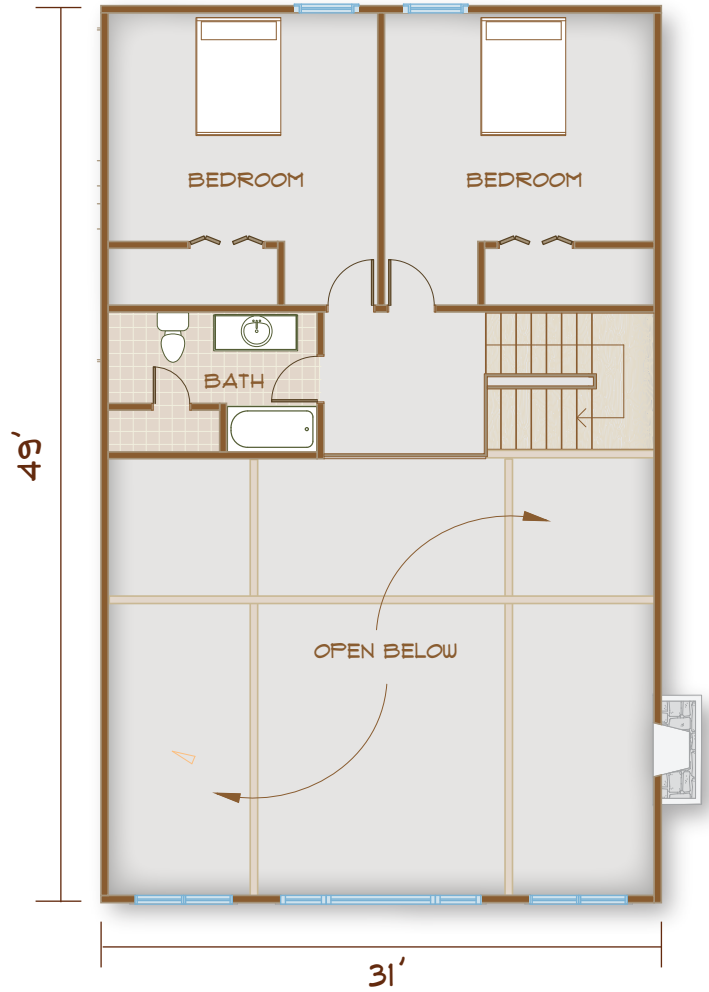
# The Greenfield

A 30' x 30' garage, tucked away in plain sight, has room for at least two vehicles and all your gadgets. The second floor of the garage is yours to name: Office? Exercise room? Studio?

The second-floor landing of the house provides a sweeping view of the living area below, even allowing a peek at what's headed out of the kitchen to the dining room table!

Two cozy bedrooms share a full bath and look out over the back lawn and gardens.

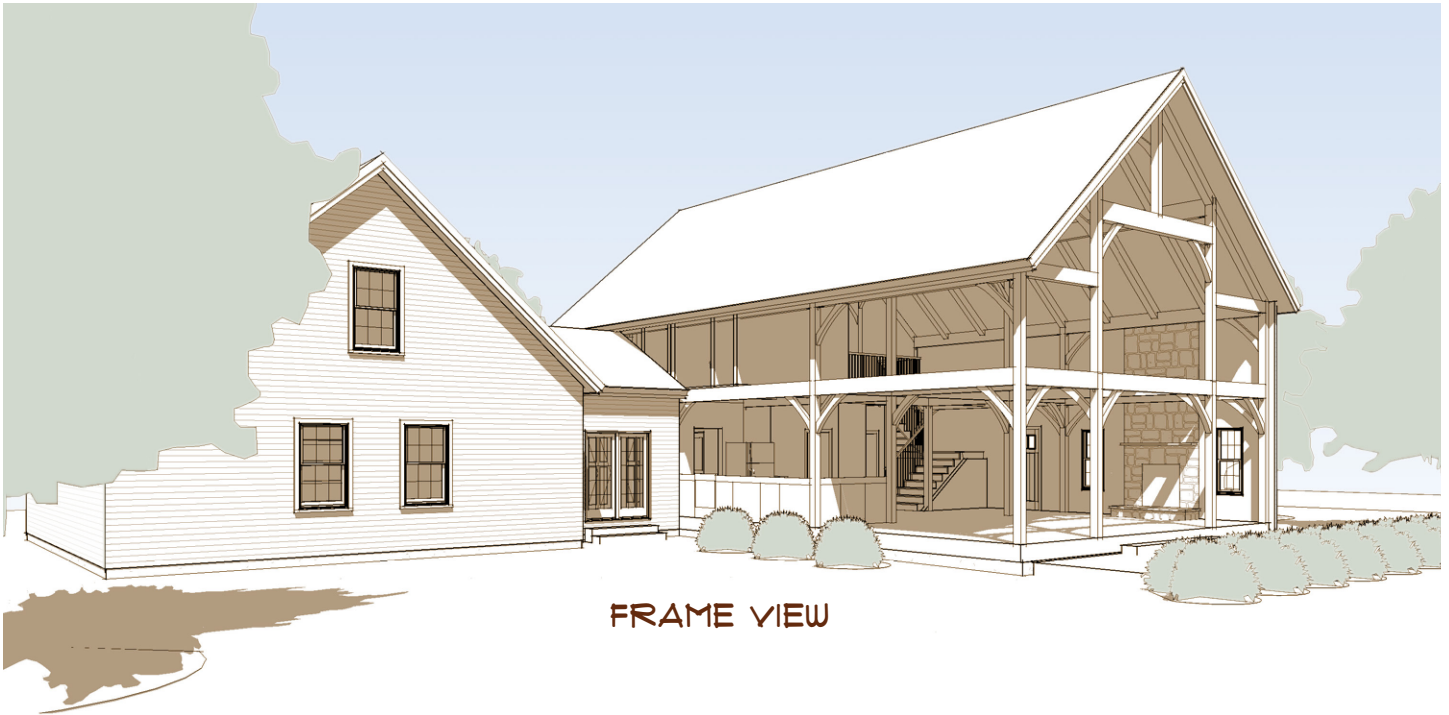
UPPER FLOOR  
760 SF



FRONT ELEVATION

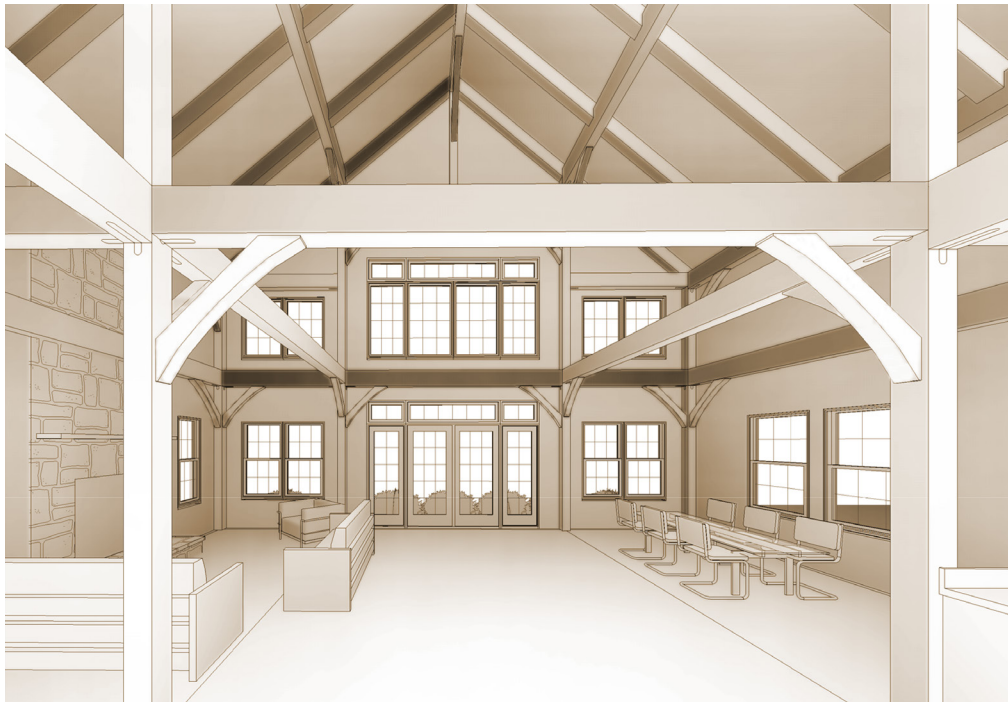


# The Greenfield



FRAME VIEW

**The Greenfield:  
Make a grand impression**



MAIN FLOOR  
INTERIOR VIEW

603-654-3210 • 208 Pettingill Hill Road, Lyndeborough, NH

