

Jefferson Carriage House

All-in-One Convenience



The Jefferson has a classic barn silhouette. This nicely proportioned 25' x 37', 1-1/2 story barn can be equipped with large rolling doors, perfect for farm equipment or mounted riders. Or, install overhead doors as shown and use the space as a garage! The loft space provides almost 900 square feet of living space for your guests – or for yourself on weekends away.

Spend your down time between hikes or building site work in this comfortable, low-maintenance residence, preparing meals in the eat-in kitchen. Or invite friends to stay in these cozy guest quarters so you can enjoy each other's company without feeling like you're on top of each other. Additional space on the first floor allows for a shop and mechanicals alongside your cars and equipment.



www.brookspostandbeam.com

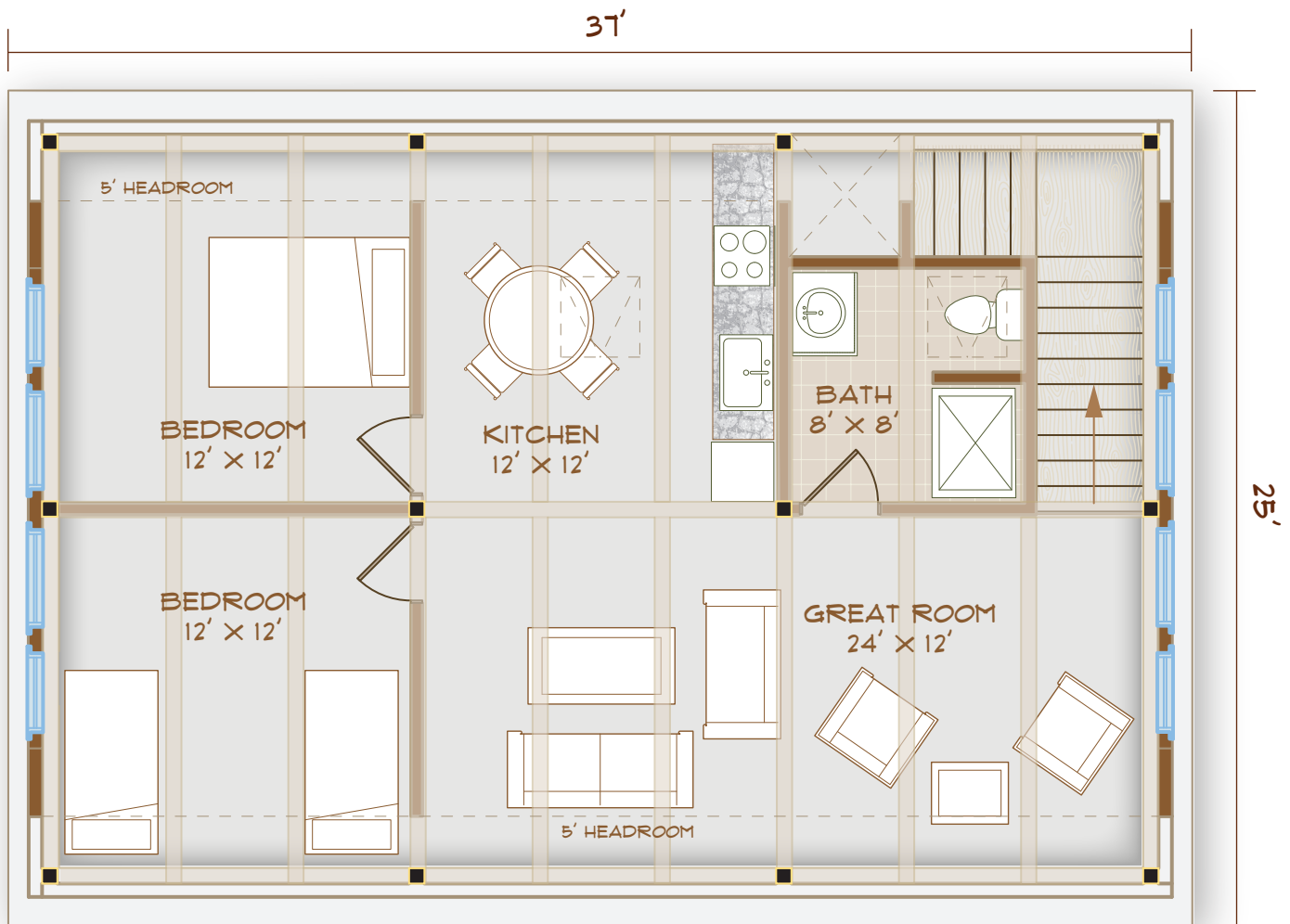
Jefferson Carriage House

Barns are where timber frame architecture first showed its usefulness. Whether you need to divide your barn into many stalls for livestock or leave it open to store heavy equipment, a timber frame barn can deliver; with no need for load-bearing walls, you can be flexible.

Timber frame barns are completely at home in a rural environment. They've been a part of the New

England geography for centuries, after all! Brooks Post & Beam barns and garages are made primarily of native New Hampshire lumber; the walls can be composed of a simple, affordable layer of shiplap boards, just as they were 100 years ago!

And while any timber frame structure will allow for flexibility, a barn can be even more versatile and responsive over time as your needs change.



UPPER FLOOR
925 SF

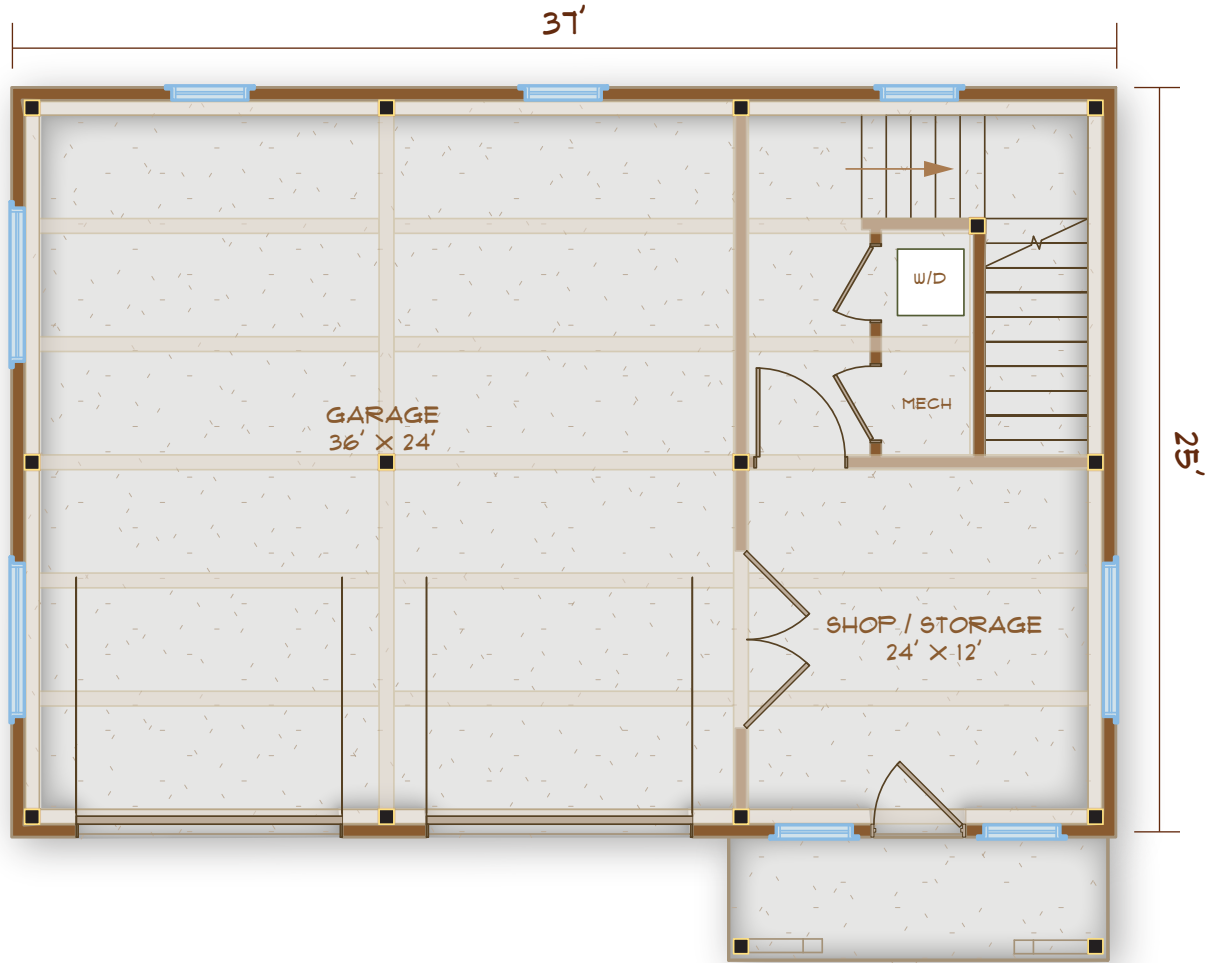
TOTAL 1850 SF
BEDROOMS: 2
BATHS: 1

603-654-3210 • 208 Pettingill Hill Road, Lyndeborough, NH



Jefferson Carriage House

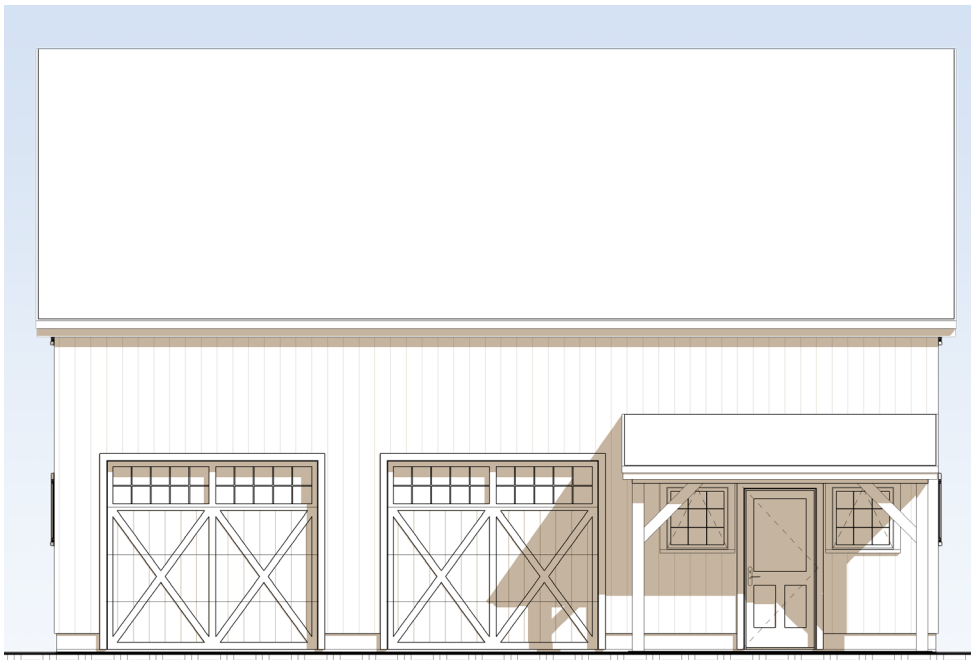
MAIN FLOOR
925 SF



INTERIOR
FRAME VIEW



Jefferson Carriage House



FRONT ELEVATION

Jefferson
Carriage House:
All-in-one
convenience

603-654-3210 • 208 Pettingill Hill Road, Lyndeborough, NH

