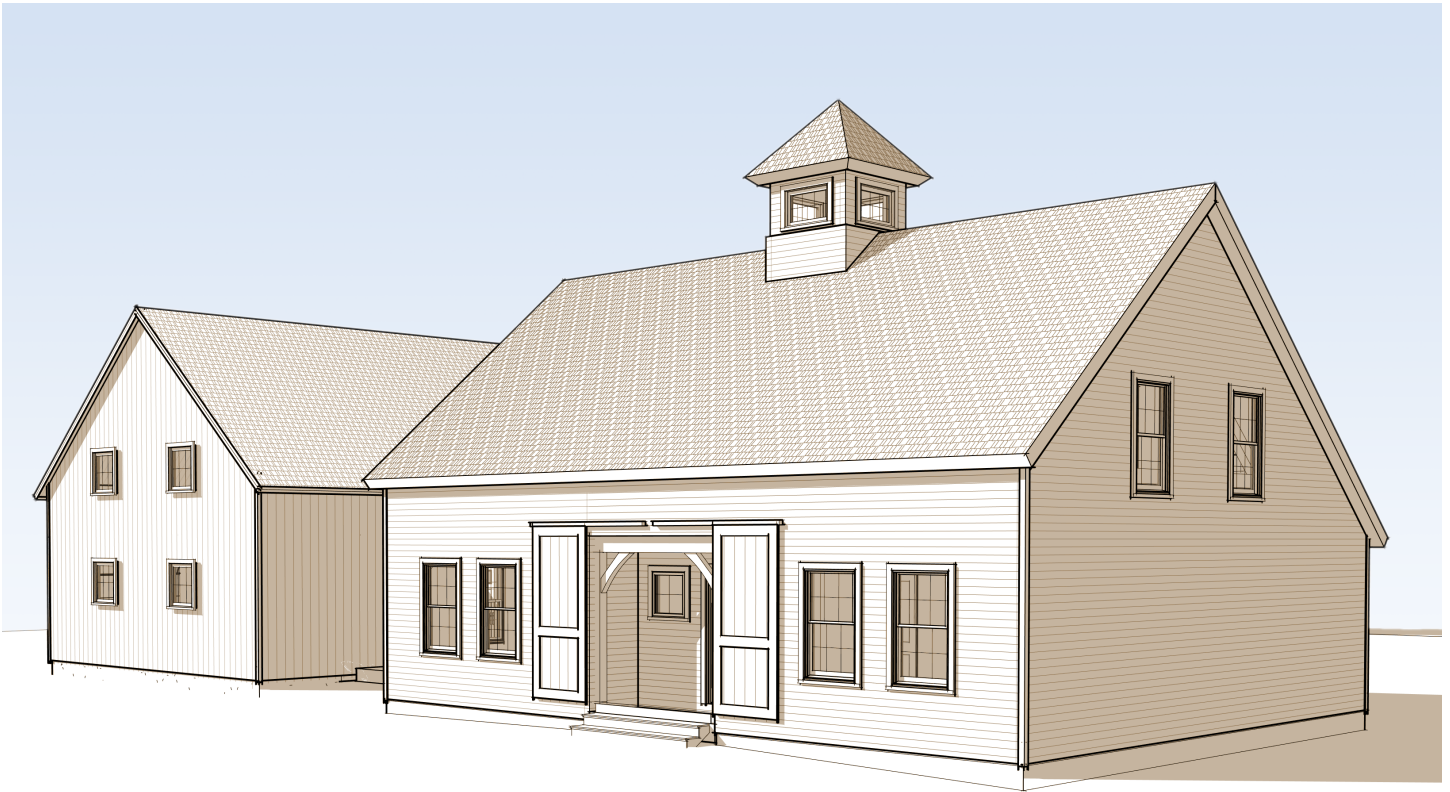


# The Nutfield

Understated versatility



The cupola calls to mind a New England farm. Likewise, the barn doors at the entrance.

But don't mistake The Nutfield for a particularly tasteful place to keep just your horse and tractor (although you should feel free to do that too!) A walk around the back reveals the truth of this beautifully designed and spacious home.

Combine it with the Brooks Post & Beam Whiteface Barn kit and Ell kit, and The Nutfield becomes a

home a family running a business can grow into for years to come.

The Whiteface – a 28' x 36' design that comes in the shape of a historic barn – is configured for three-bay parking. Its sizable loft can be used for storage, or as a large office or workout area. The Ell, connecting the barn and living space, serves as an entryway, adds a bathroom, and inserts a buffer between work and home.



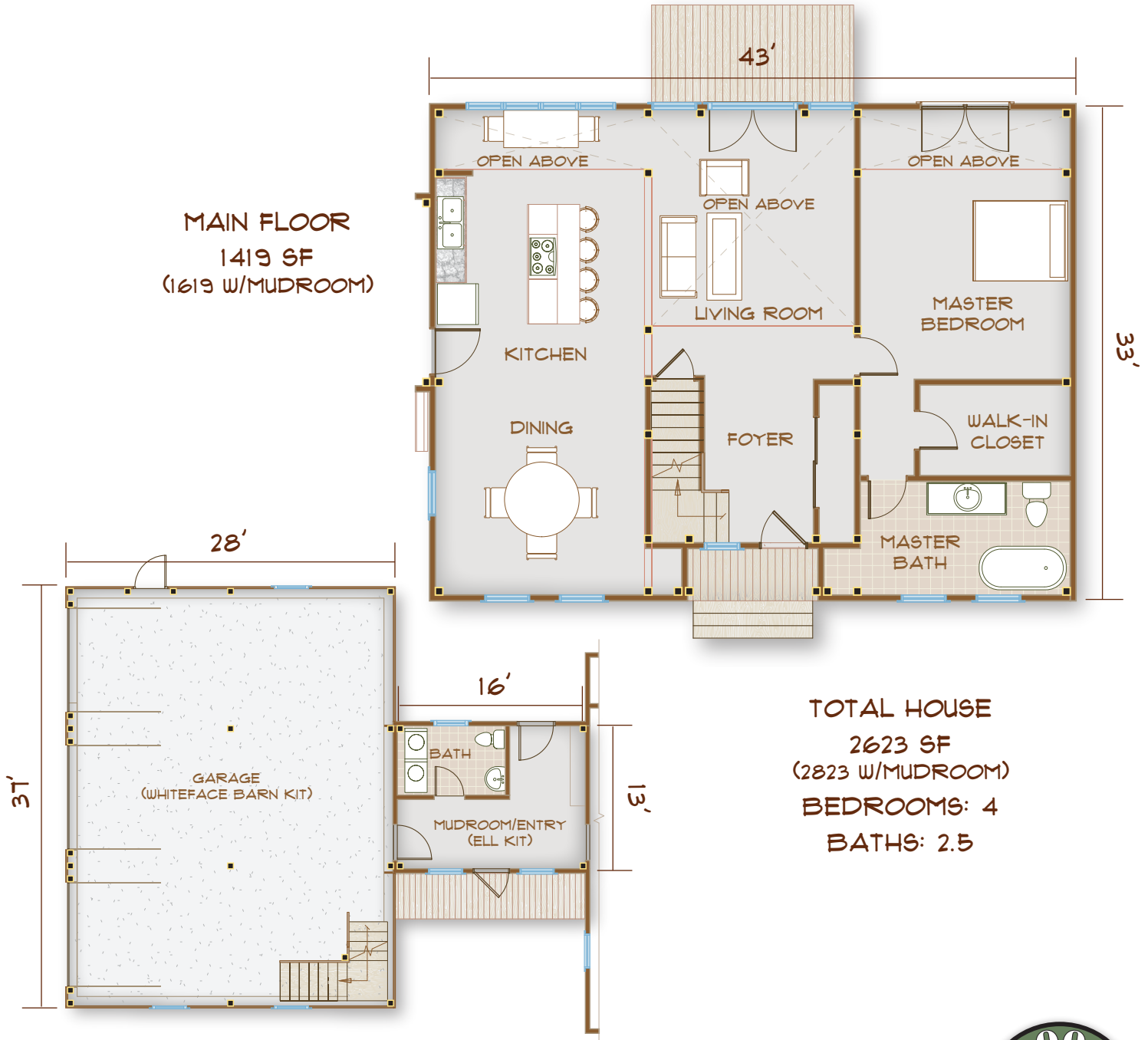
[www.brookspostandbeam.com](http://www.brookspostandbeam.com)

# The Nutfield

## The Rooms

The living room takes advantage of plentiful windows and a view of the exposed frame all the way up to the roof. Running the full length of the home on one side are the dining room and sunny

kitchen; down the other is the first-floor master suite you've been hoping for! Closets, built-ins, and a spacious foyer just inside those barn doors mean there is a place for everything.

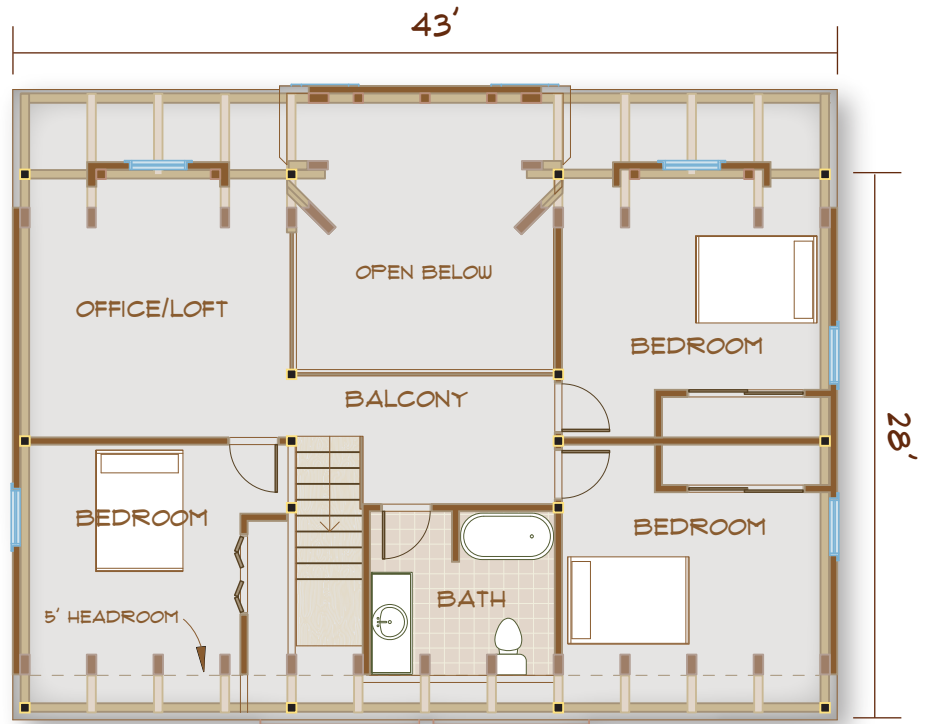


# The Nutfield

So much room! There are three more bedrooms upstairs, along with an office or sitting area under a dormered window. A balcony, open to the living

room and all the bedrooms, as well as a full bath, are found at the top of the stairs.

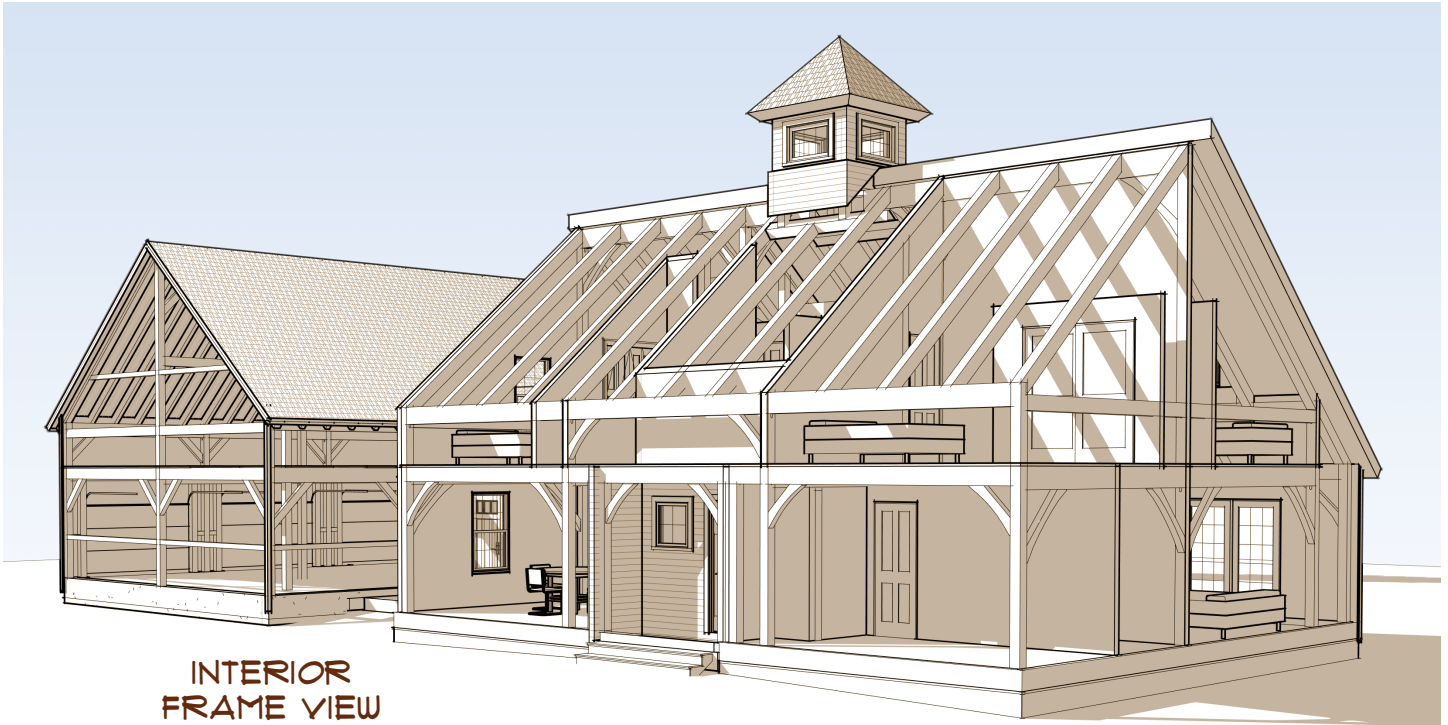
UPPER FLOOR  
1204 SF



REAR ELEVATION

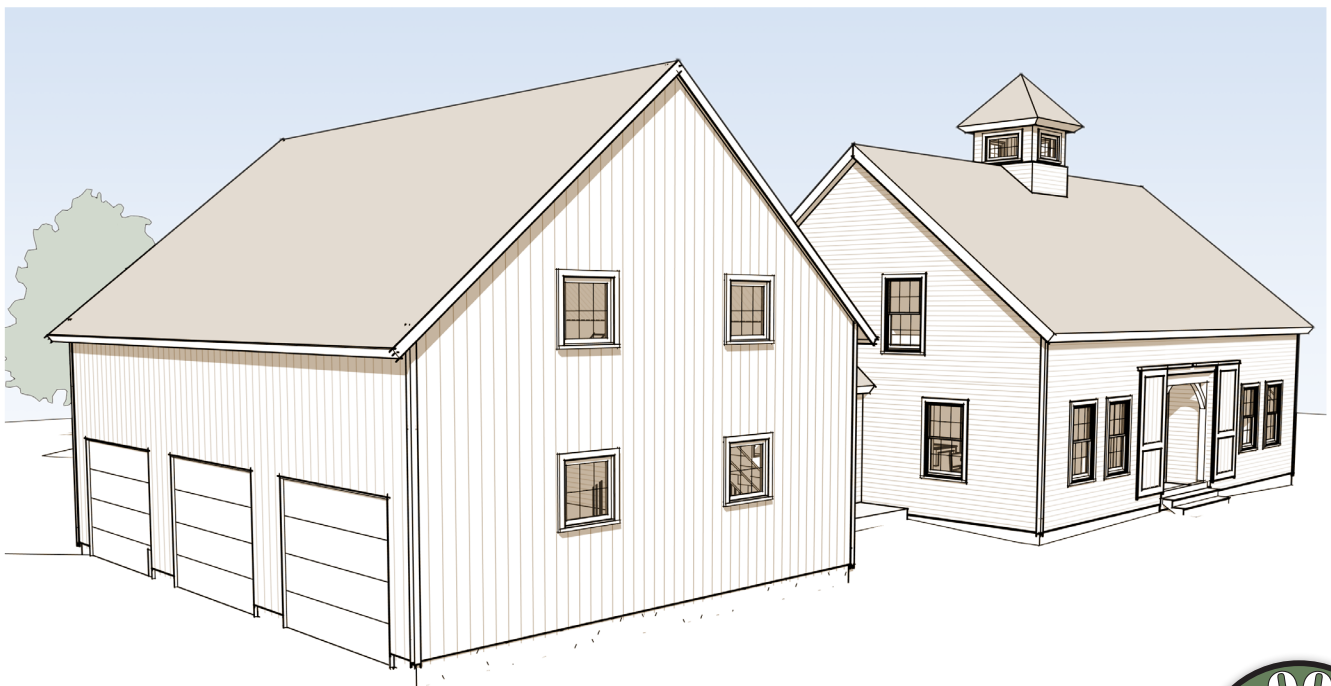


# The Nutfield



INTERIOR  
FRAME VIEW

**The Nutfield:**  
**Understated versatility**



603-654-3210 • 208 Pettingill Hill Road, Lyndeborough, NH

