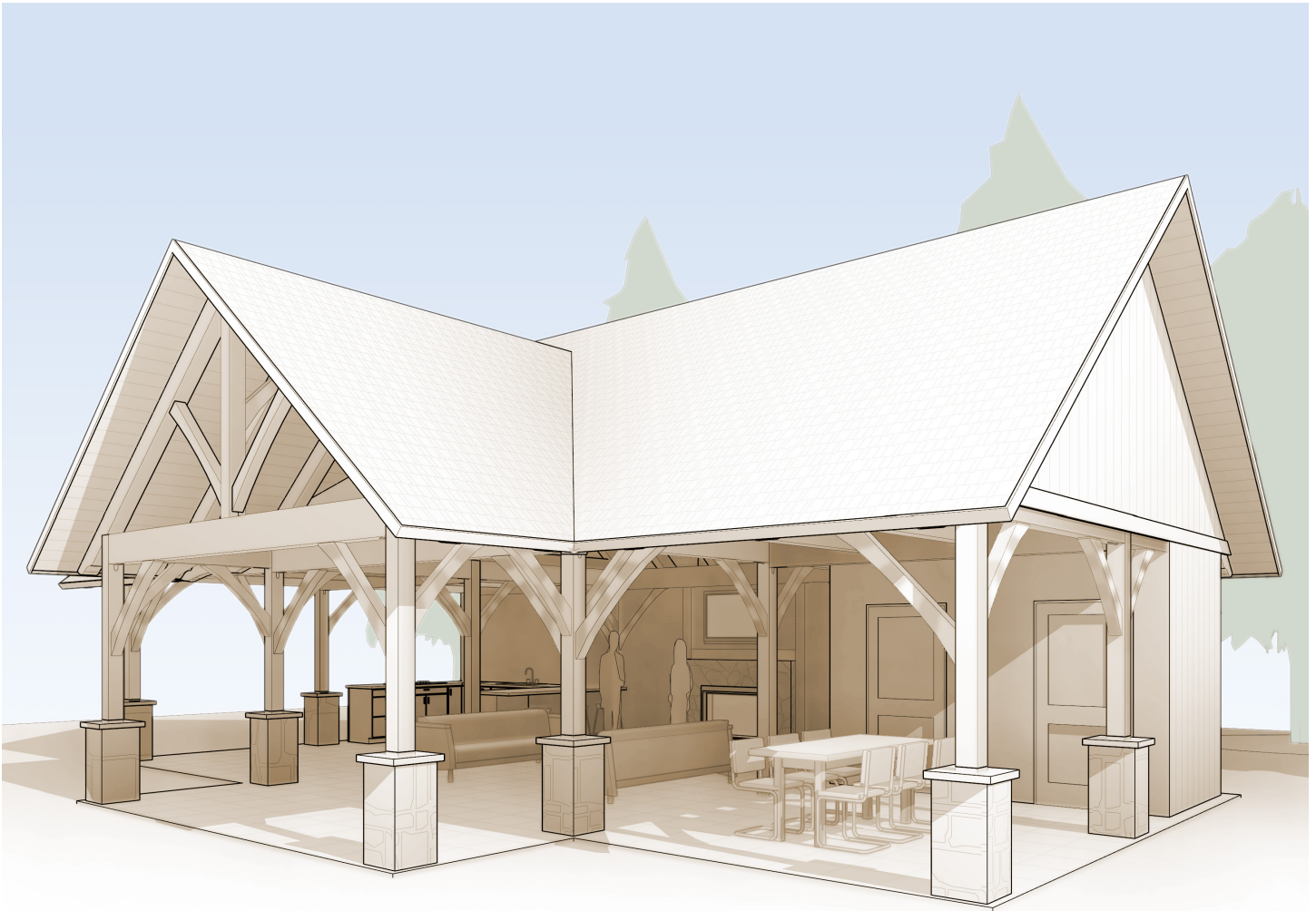


Pool Houses

The luxury of convenience



Grand Pool House

A hot, sunny day spent relaxing and playing at the pool is what many of us look forward to during the cold months of the year. When the time comes, how much of that day is spent packing up supplies and running back and forth for drinks and comfort

breaks? Do kids streaming with chlorinated water wear a path through the house all day long?

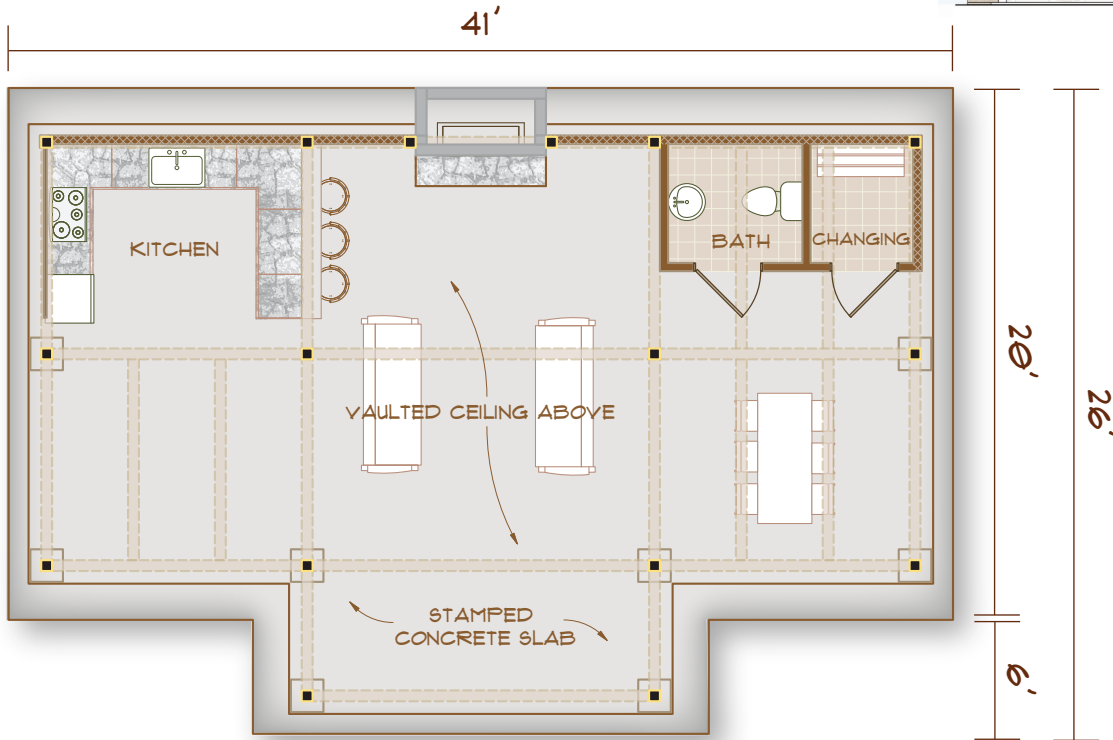
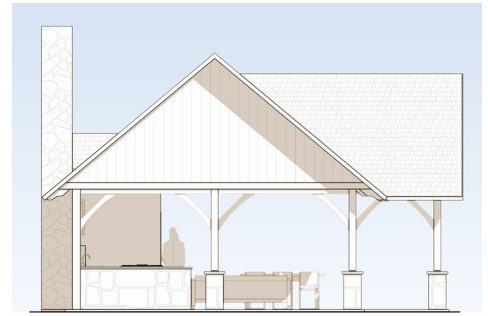
A Brooks Pool House beautifies the pool area with post and beam architecture and supplies family and



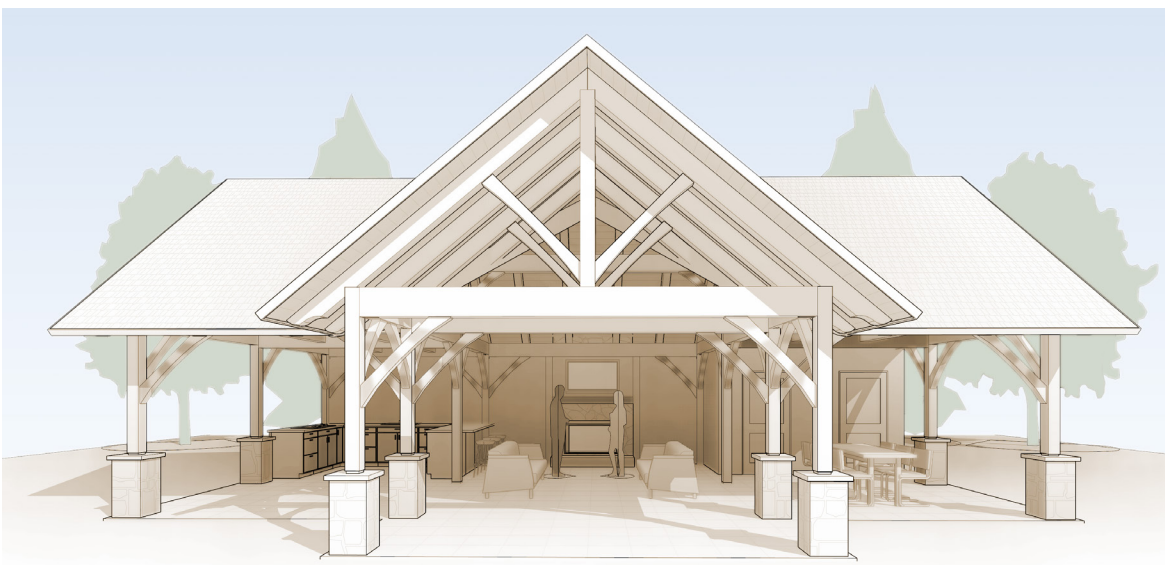
www.brookspostandbeam.com

Pool Houses

friends with everything they need to enjoy a carefree day, including shelter, a changing area, and snack storage. The Grand Pool House even has room for its own bathroom and kitchen!



GRAND
POOLHOUSE
1066 SF



603-654-3210 • 208 Pettingill Hill Road, Lyndeborough, NH

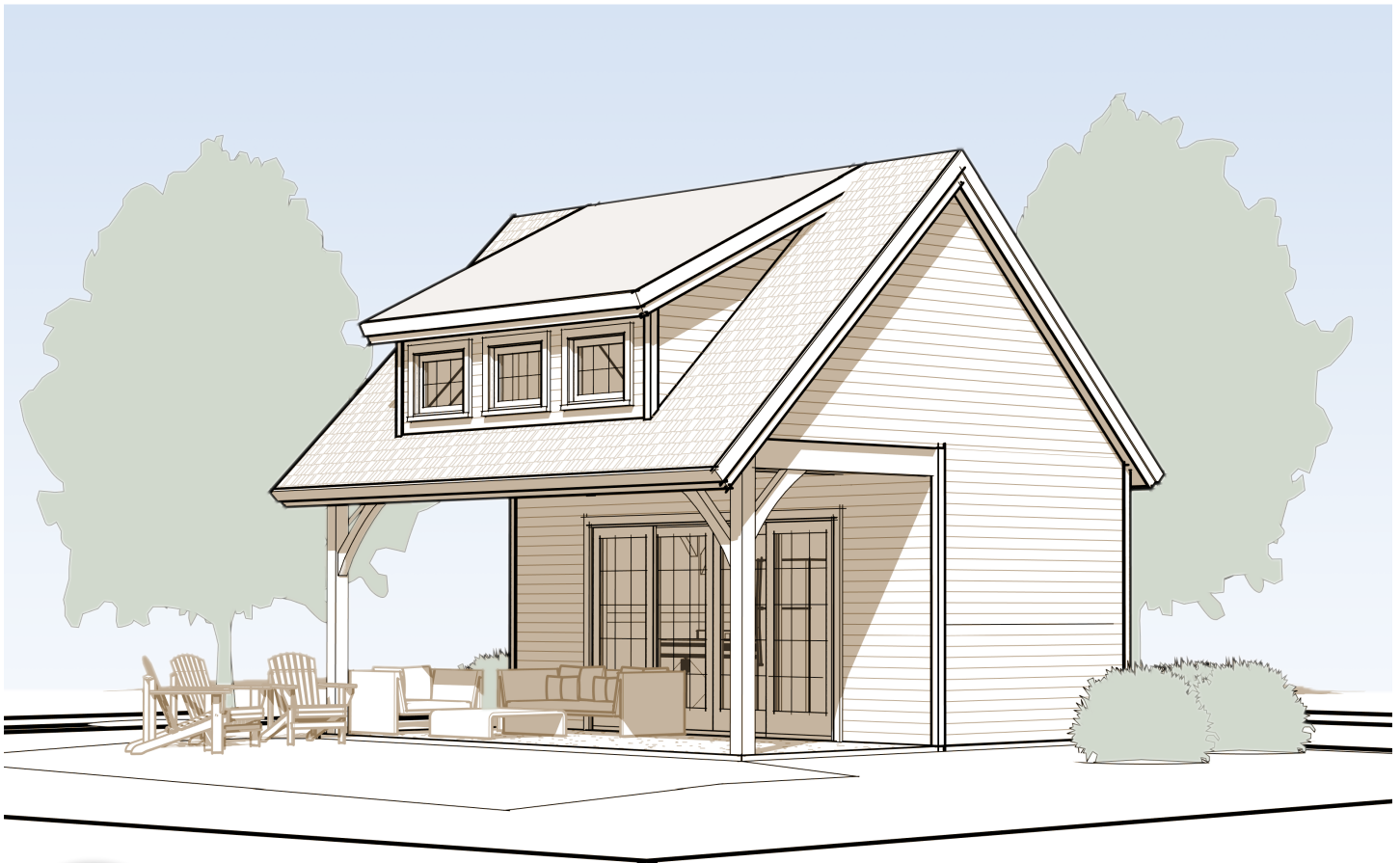
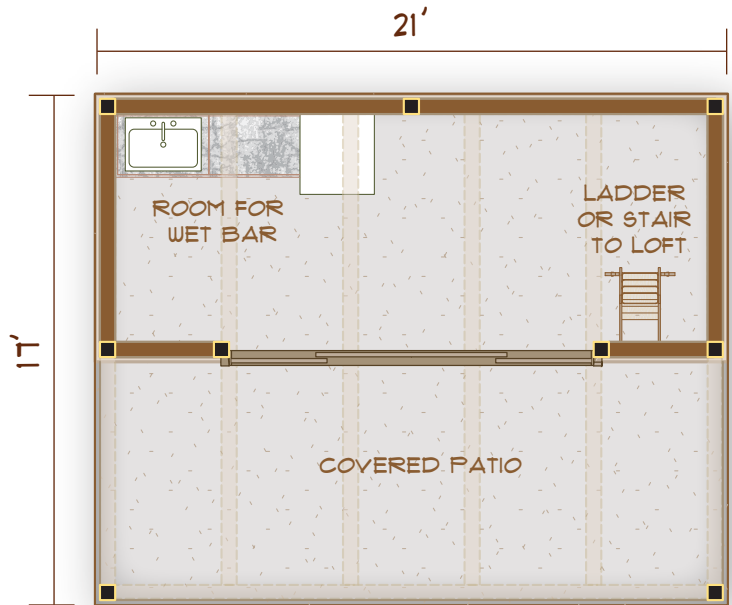


Pool Houses

Pocket Pool House

This smaller pool house plan also offers shaded shelter alongside the pool, just on a smaller scale. Inside, an 8' x 20' space can be tailored to your poolside needs, whether they are for a wet bar, a small bathroom, sitting room, or some combination. Upstairs, a dormered loft could be used as a bunk area or for

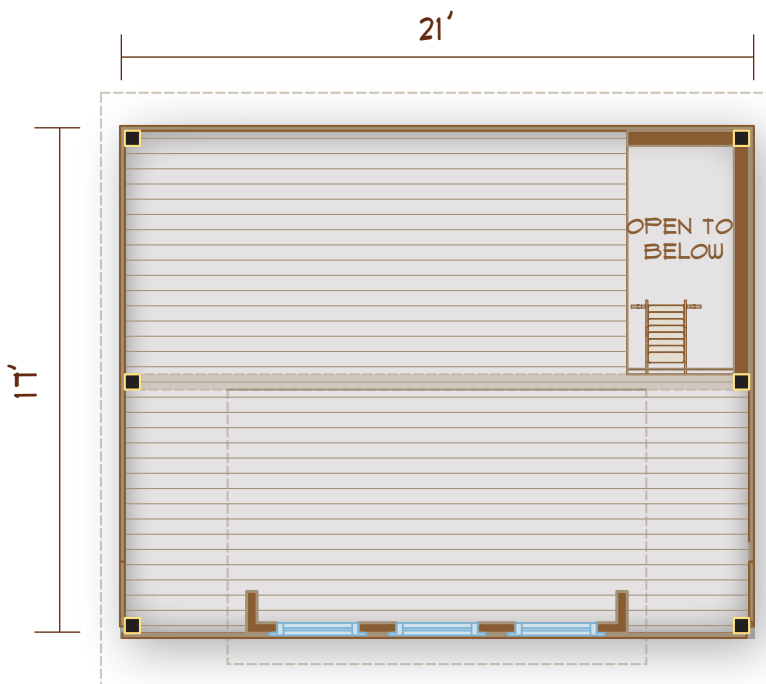
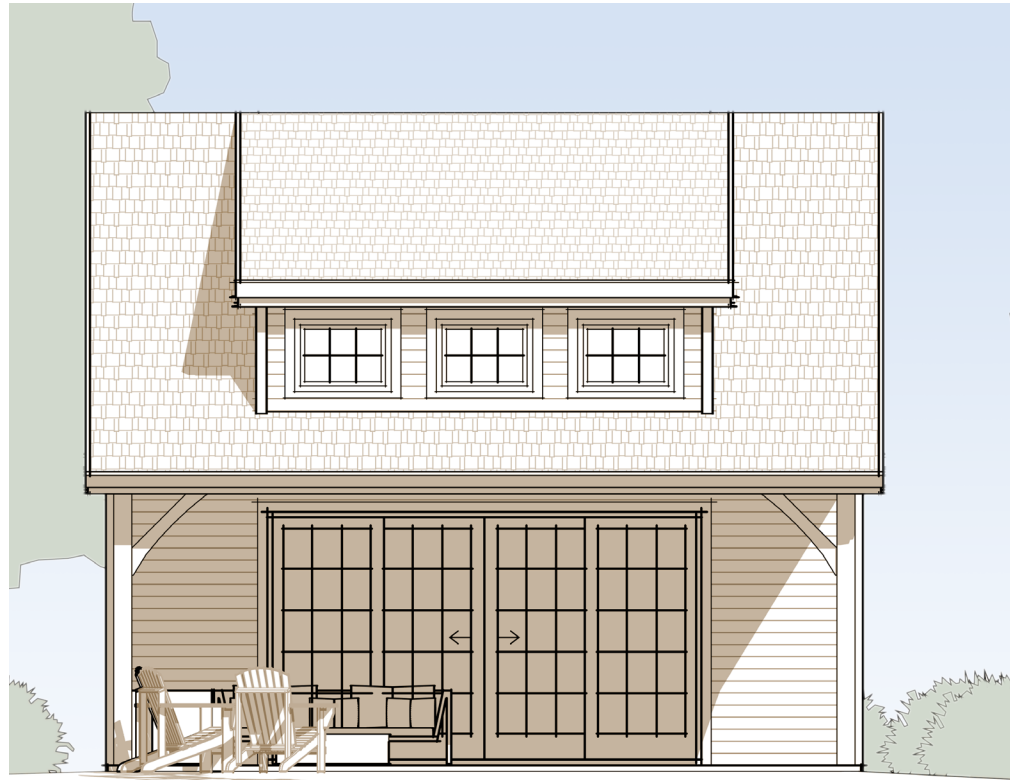
MAIN FLOOR
357 SF



Pool Houses

storage of pool equipment and backup snack supplies!

As with all Brooks Post & Beam kits, wall locations can be changed to help create the kind of space you're looking for.



**LOFT
STORAGE
357 SF**

**Pool Houses:
The luxury of
convenience**