

The Whiteface Carriage House

Room to Move



This 29' x 37' design comes in the shape of a historic barn, but is configured for three-bay parking. Cars, a tractor, the boat, even the snowmobiles can be stored handily in this roomy garage.

After a day of work or play, enjoy the view of your property and beyond from the apartment upstairs.

With two bedrooms and an open-floorplan kitchen and living area, this might be all the space you need! The two-in-one Whiteface Carriage House is also a great choice as a home away from home or a guesthouse. Or, build the Whiteface first and stay there in comfort while you build your dream home!

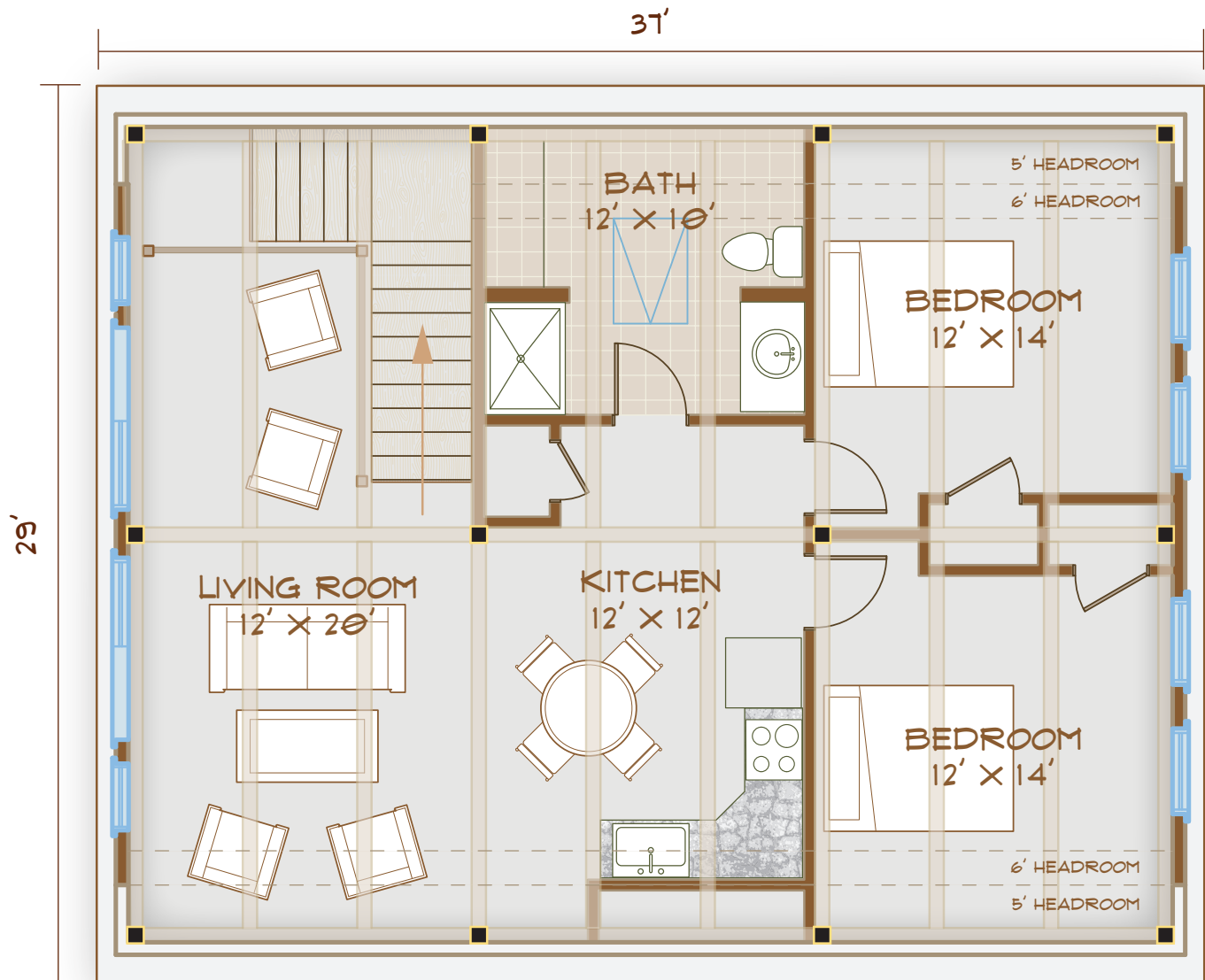


www.brookspostandbeam.com

The Whiteface Carriage House

Barns are where timber frame architecture first showed its usefulness. Whether you need to divide your barn into many stalls for livestock or leave it open to store heavy equipment, a timber frame barn can deliver; with no need for load-bearing walls, you can be flexible.

Timber frame barns are completely at home in a rural environment. They've been a part of the New England geography for centuries, after all! Brooks Post & Beam barns and garages are made primarily of native New Hampshire native lumber.



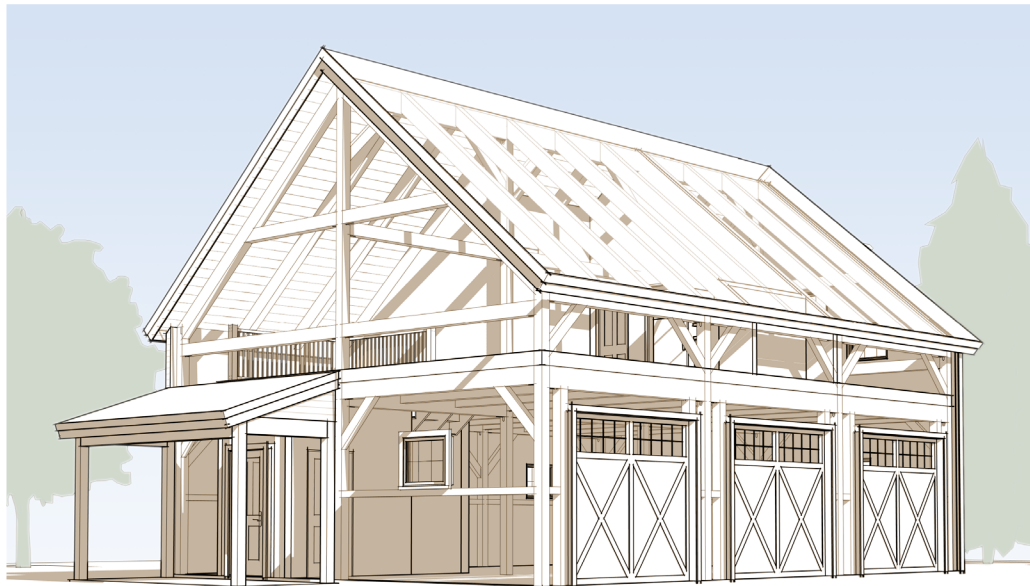
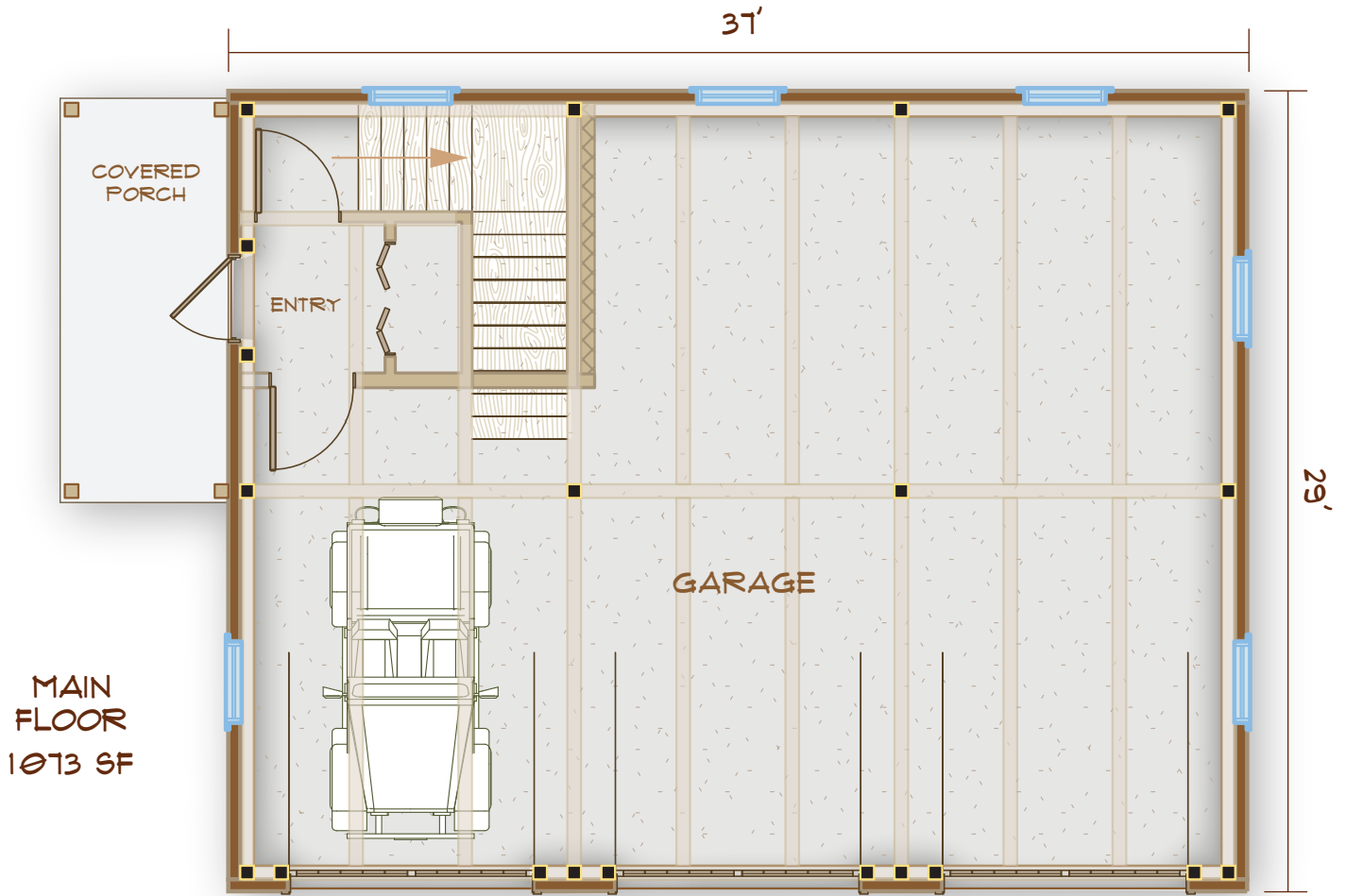
UPPER FLOOR
1073 SF

TOTAL 2146 SF
BEDROOMS: 2
BATHS: 1

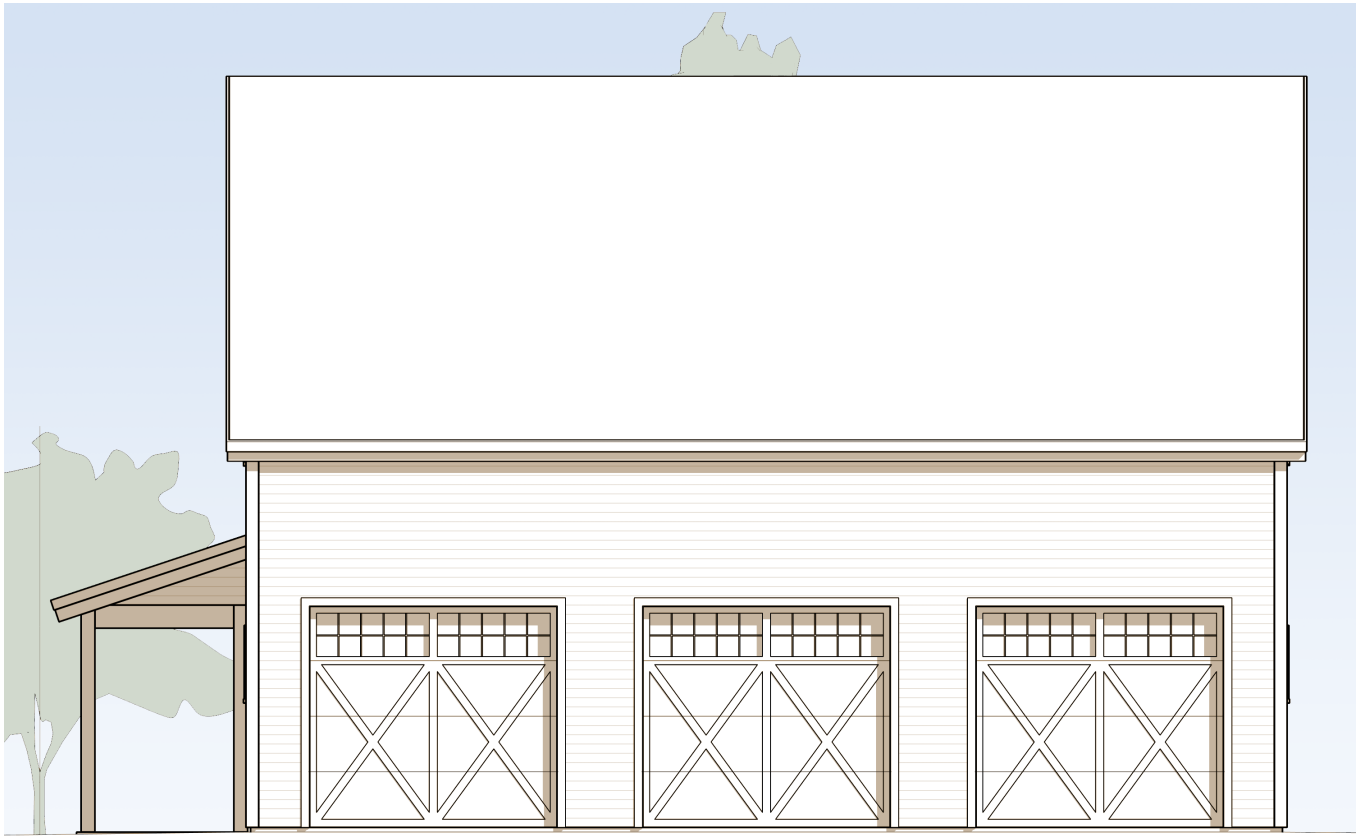
603-654-3210 • 208 Pettingill Hill Road, Lyndeborough, NH



The Whiteface Carriage House



The Whiteface Carriage House



**The Whiteface
Carriage House:
Room to move.**

603-654-3210 • 208 Pettingill Hill Road, Lyndeborough, NH

