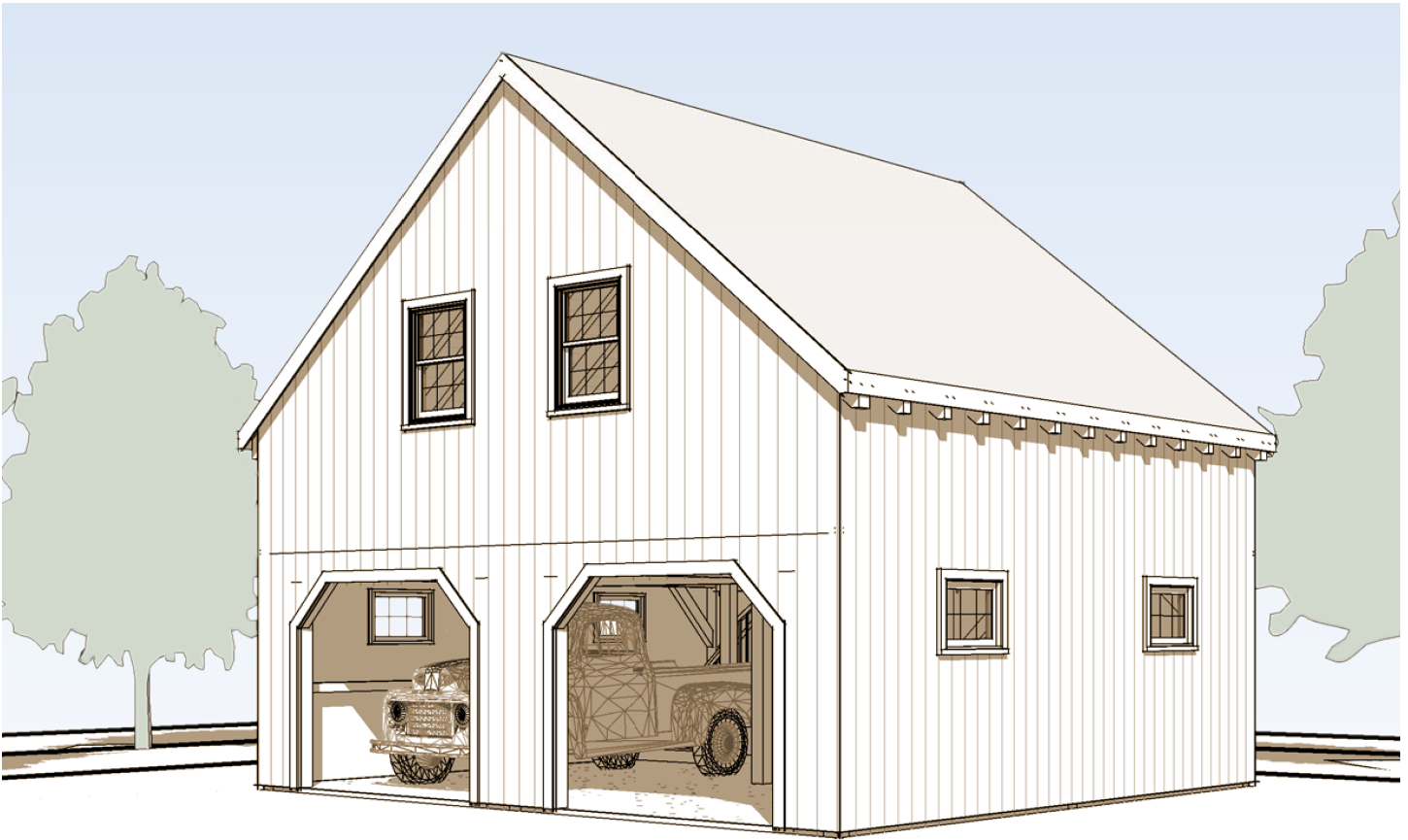


Attitash Barn

Utility at its most beautiful



FRONT VIEW

The Attitash is a mid-sized 1-1/2 story barn or garage, with a full 2nd-floor loft. At 24 feet square, it is ideal for a smaller lot, or for use as an attached or detached garage. There's plenty of room above for storage, workshop, or play area.

Barns are where timber frame architecture first showed its usefulness. Whether you need to divide

your barn into many stalls for livestock or leave it open to store heavy equipment, a timber frame barn can deliver; with no need for load-bearing walls, you can be flexible.

Timber frame barns are completely at home in a rural environment. They've been a part of the New England geography for centuries, after all! Brooks Post & Beam barns and garages are made primarily



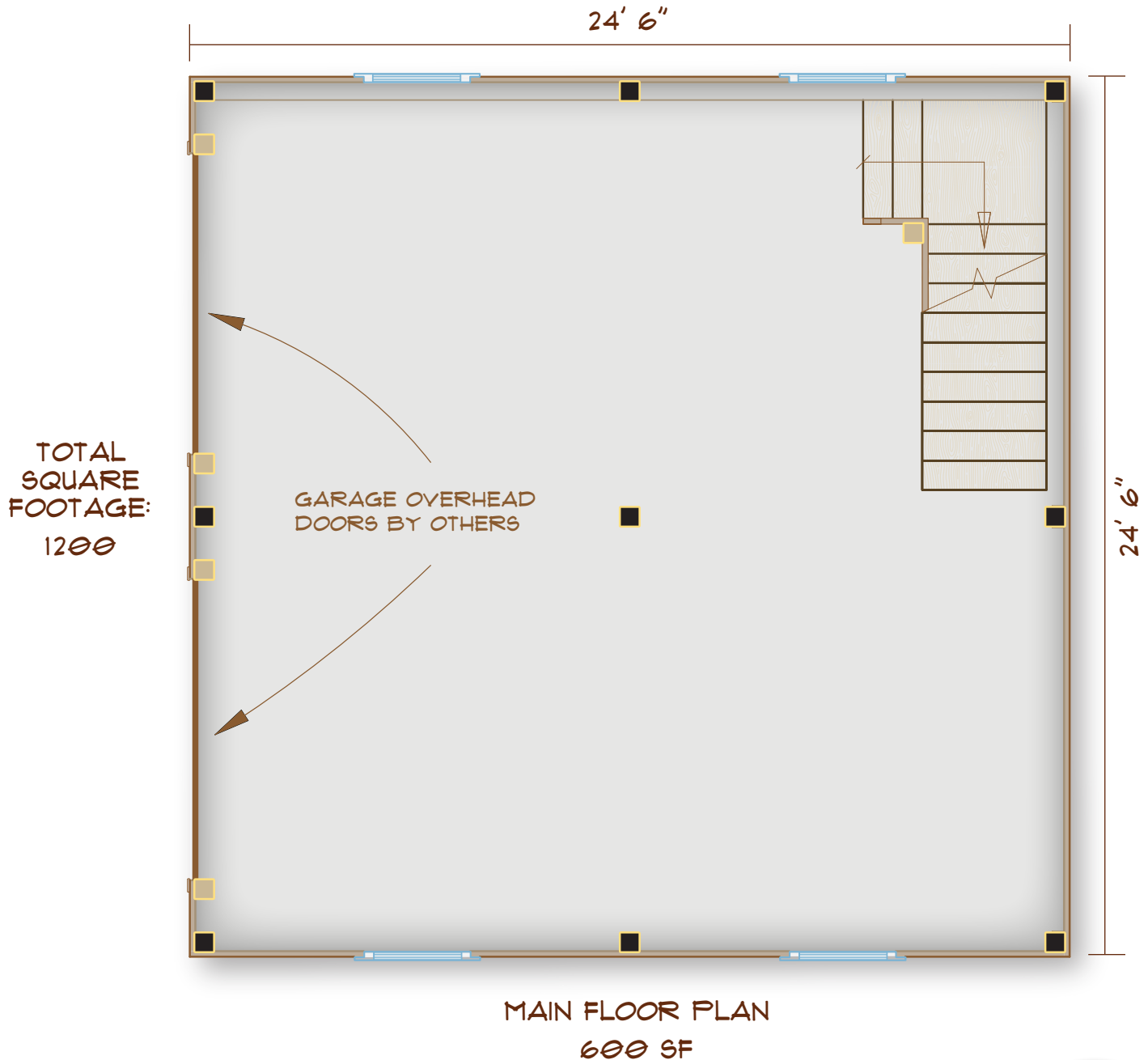
www.brookspostandbeam.com

Attitash Barn

of native New Hampshire lumber; the walls can be composed of a simple, affordable layer of shiplap boards, just as they were 100 years ago!

And while any timber frame structure will allow for flexibility, a barn can be even more versatile

and responsive over time as your needs change. Just move your partitions if you decide you want to turn your horse stalls into a parking area, apartment or art studio!

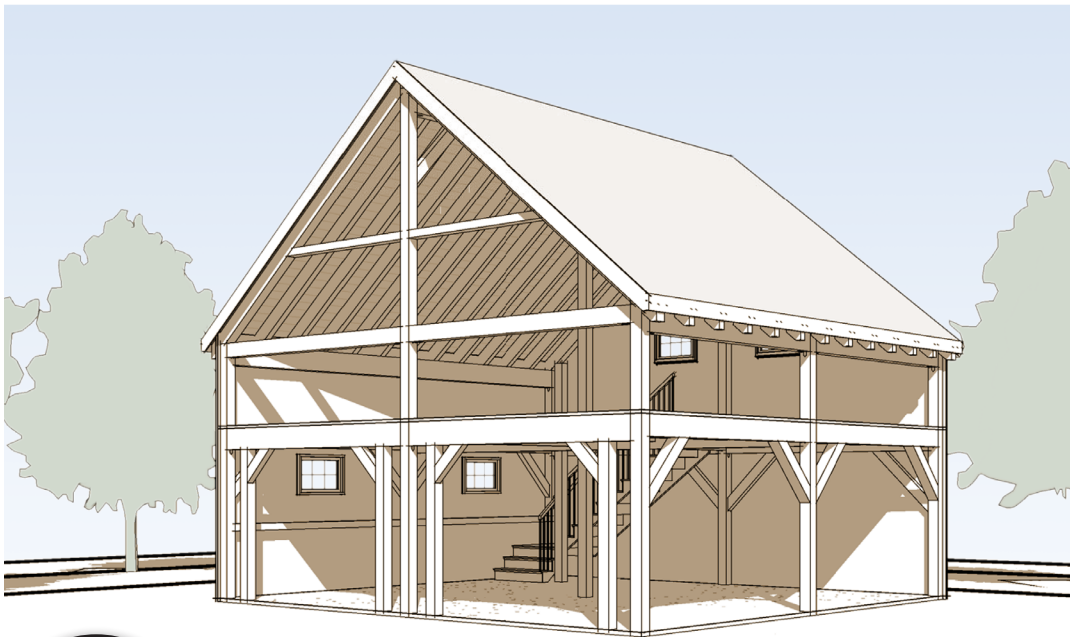
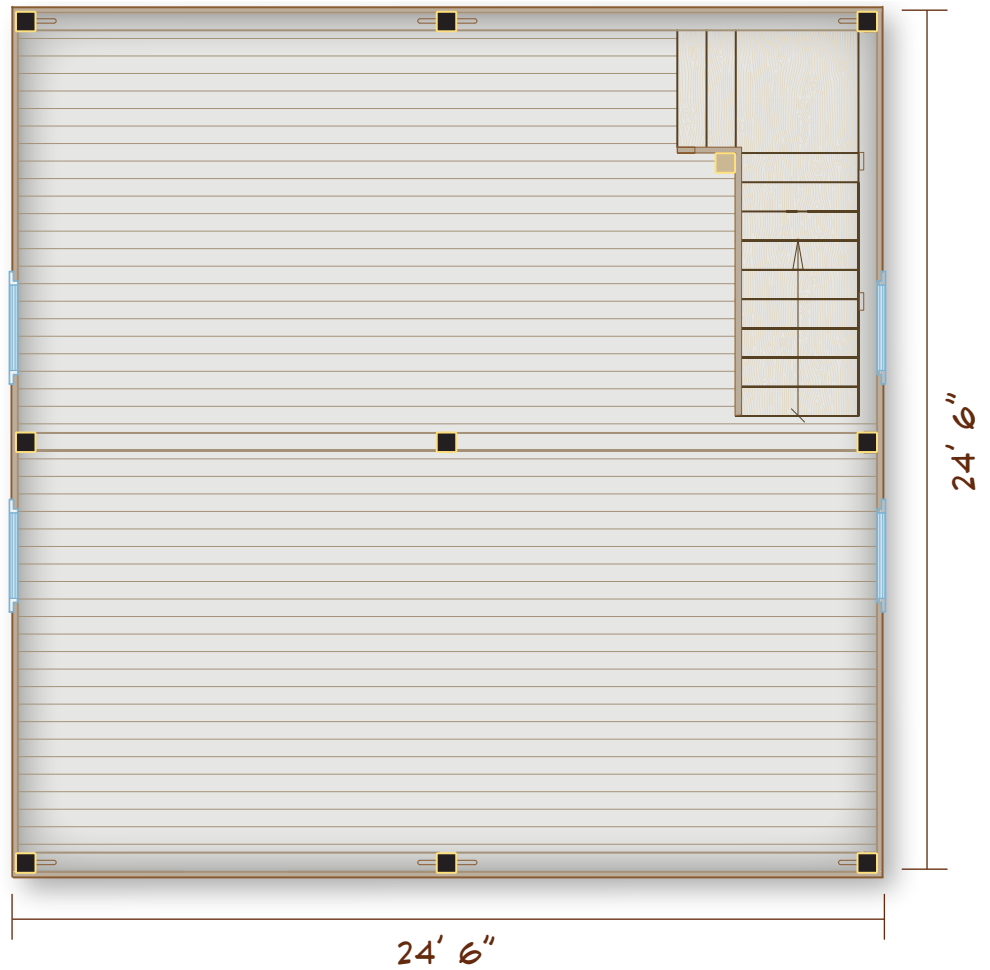


603-654-3210 • 208 Pettingill Hill Road, Lyndeborough, NH



Attitash Barn

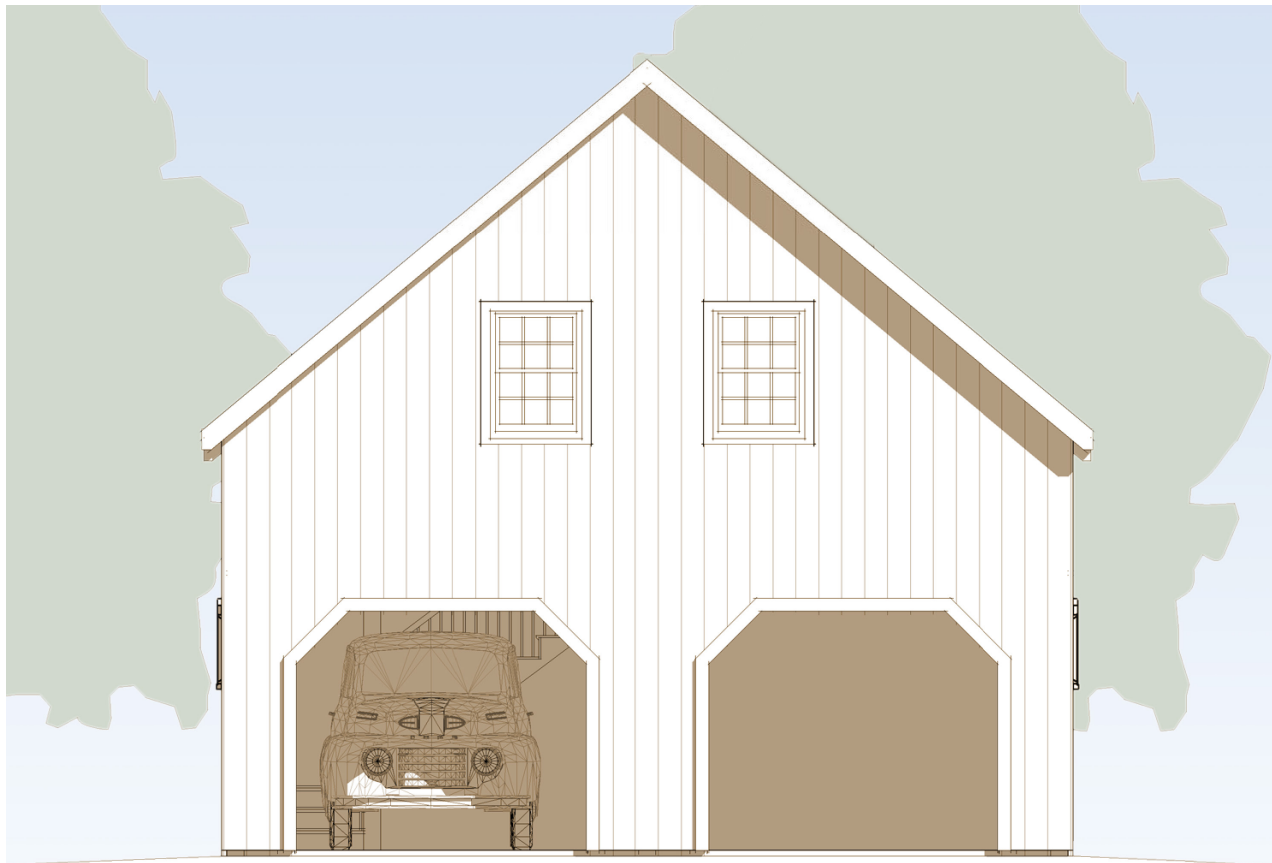
UPPER
FLOOR PLAN
600 SF



INTERIOR
FRAME VIEW



Attitash Barn



FRONT ELEVATION



Brooks
Post & Beam barns:
Where it all started.

603-654-3210 • 208 Pettingill Hill Road, Lyndeborough, NH

