

Cannon Barn

Covering all the bases in style



FRONT CORNER VIEW

One of our larger barn kits, at 3,734 square feet, The Cannon works well on a large lot or farm setting. It's designed to serve many purposes at once, from housing livestock and heavy equipment to accommodating office space and lots of storage.

Mounted horses or tractors can leave and return to shelter through two sets of rolling doors; workers – or those working out in your gym? – have a room with a view from the full second floor. Tuck storage away under the shed roof.

Barns are where timber frame architecture first showed its usefulness. Whether you need to divide your barn into many stalls for livestock or leave it open to store heavy equipment, a timber frame barn can deliver; with no need for load-bearing walls, you can be flexible.

Timber frame barns are completely at home in a rural environment. They've been a part of the

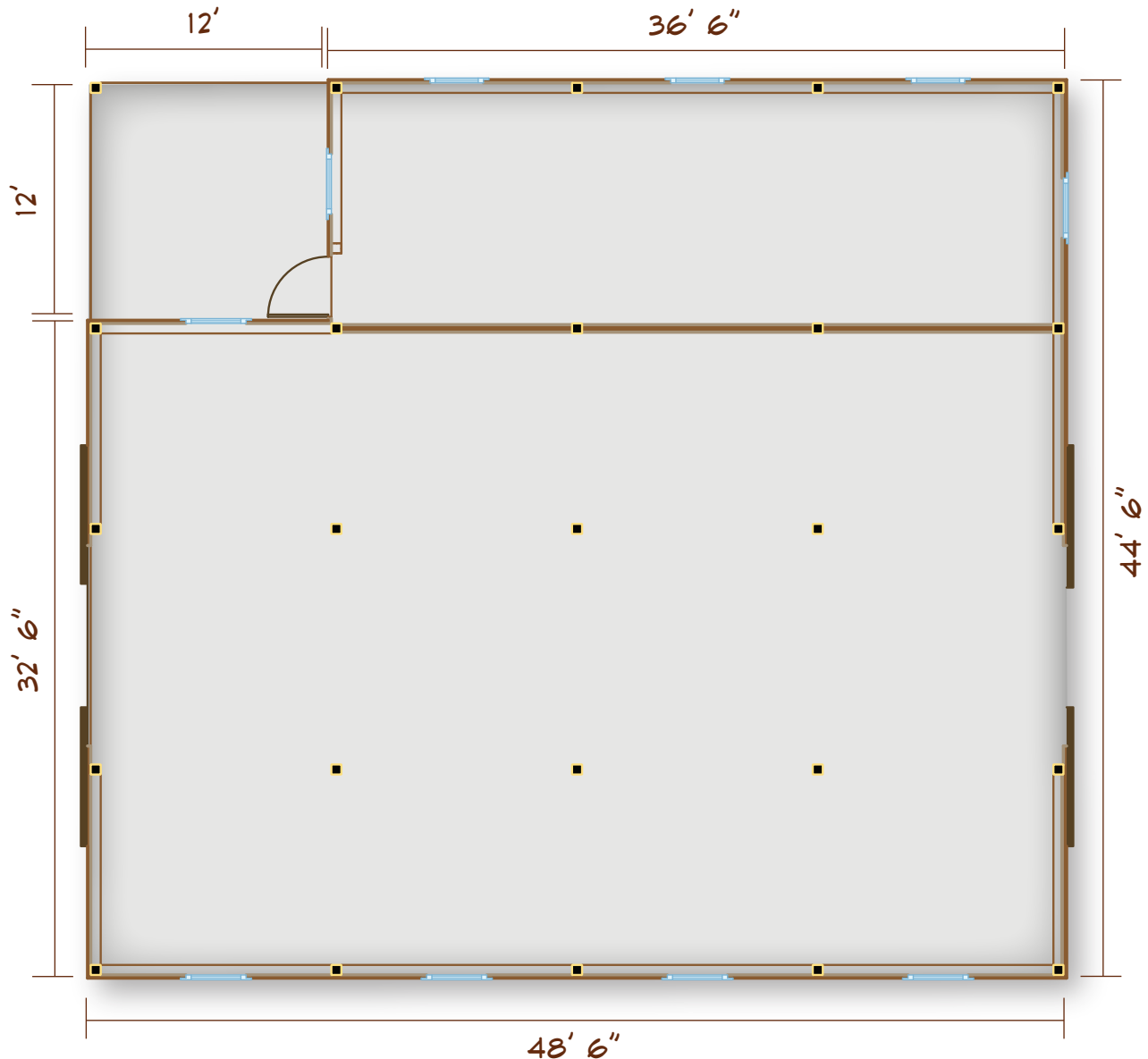


www.brookspostandbeam.com

Cannon Barn

New England geography for centuries, after all! Brooks Post & Beam barns and garages are made primarily of native New Hampshire native lumber – since they're not necessarily insulated, the walls are often made of wood shiplap.

And while any timber frame structure will allow for flexibility, a barn can be even more versatile and responsive over time as your needs change. Just move the walls if you decide you want to turn your horse stalls into a parking area, apartment or art studio!



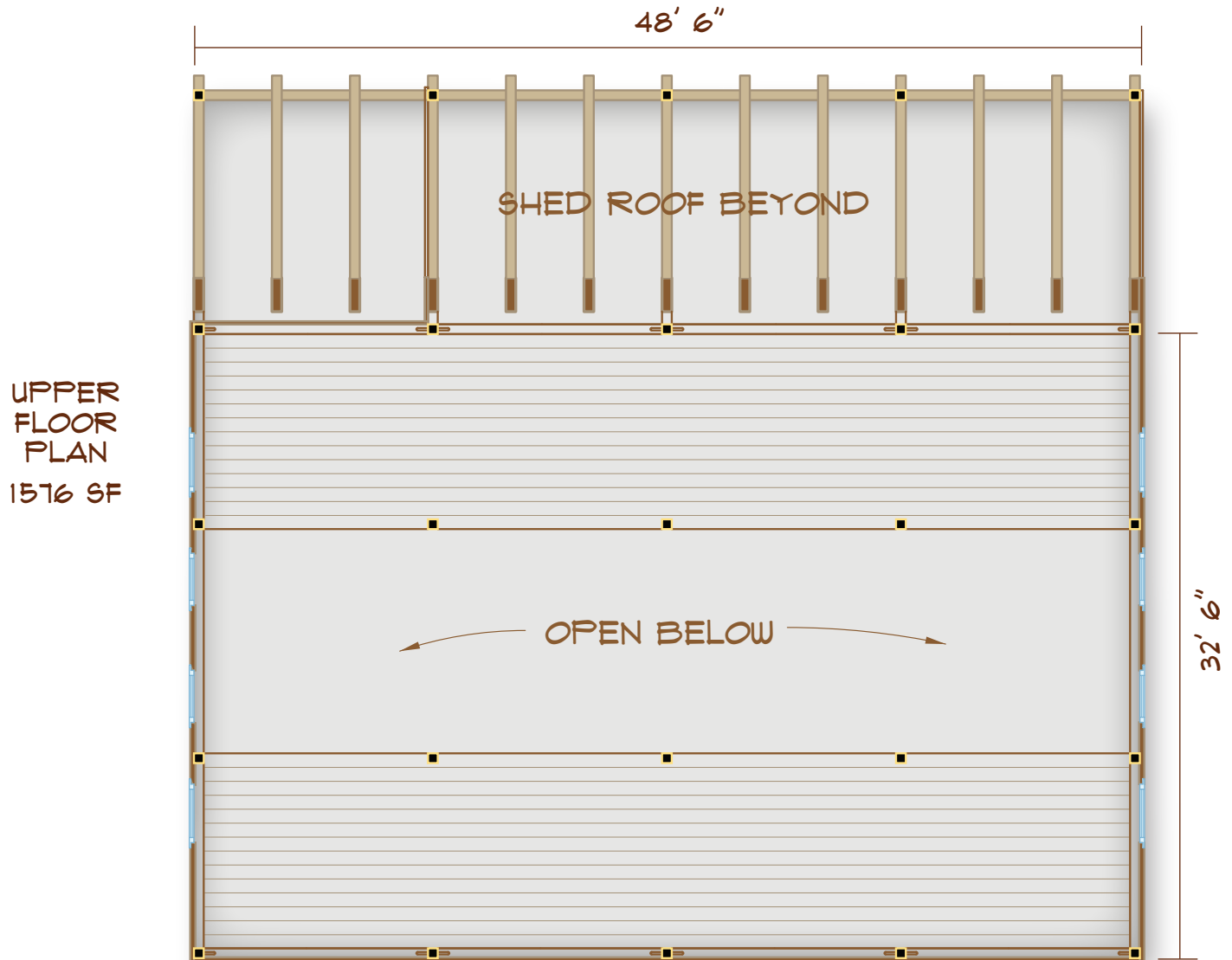
MAIN FLOOR PLAN
2158 SF

TOTAL SQUARE
FOOTAGE: 3134

603-654-3210 • 208 Pettingill Hill Road, Lyndeborough, NH



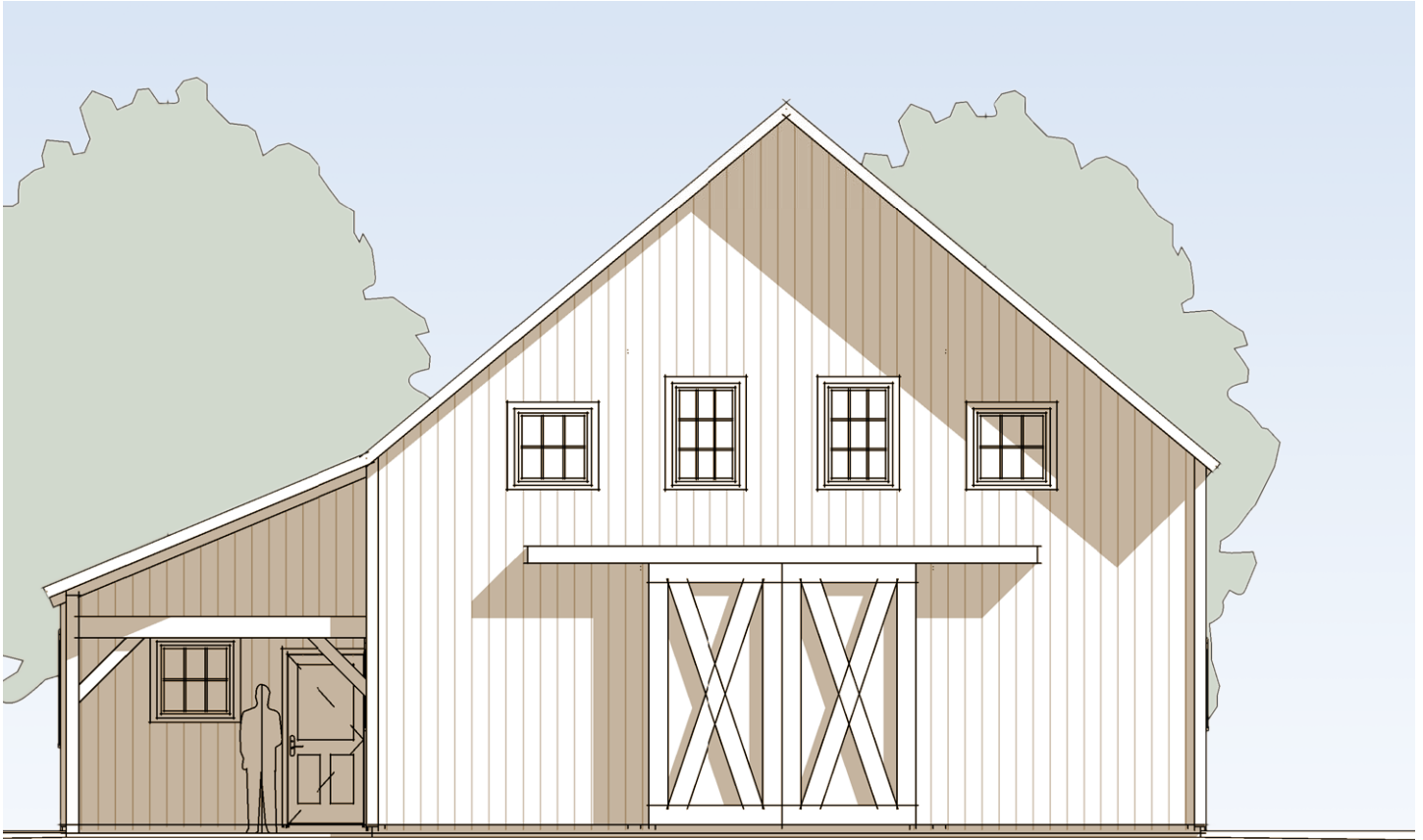
Cannon Barn



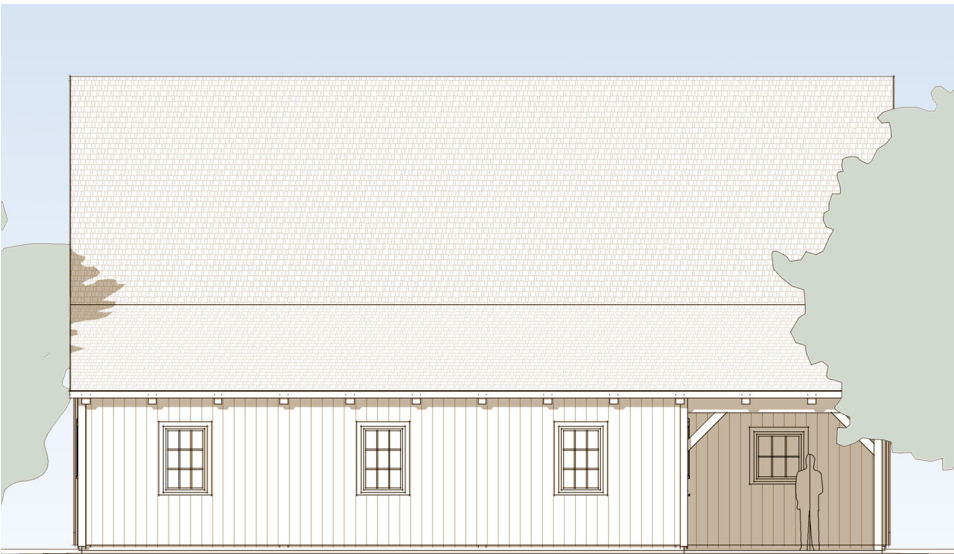
INTERIOR
FRAME VIEW



Cannon Barn



SIDE ELEVATION



FRONT ELEVATION

Brooks
Post & Beam barns:
Where it all started.

603-654-3210 • 208 Pettingill Hill Road, Lyndeborough, NH

