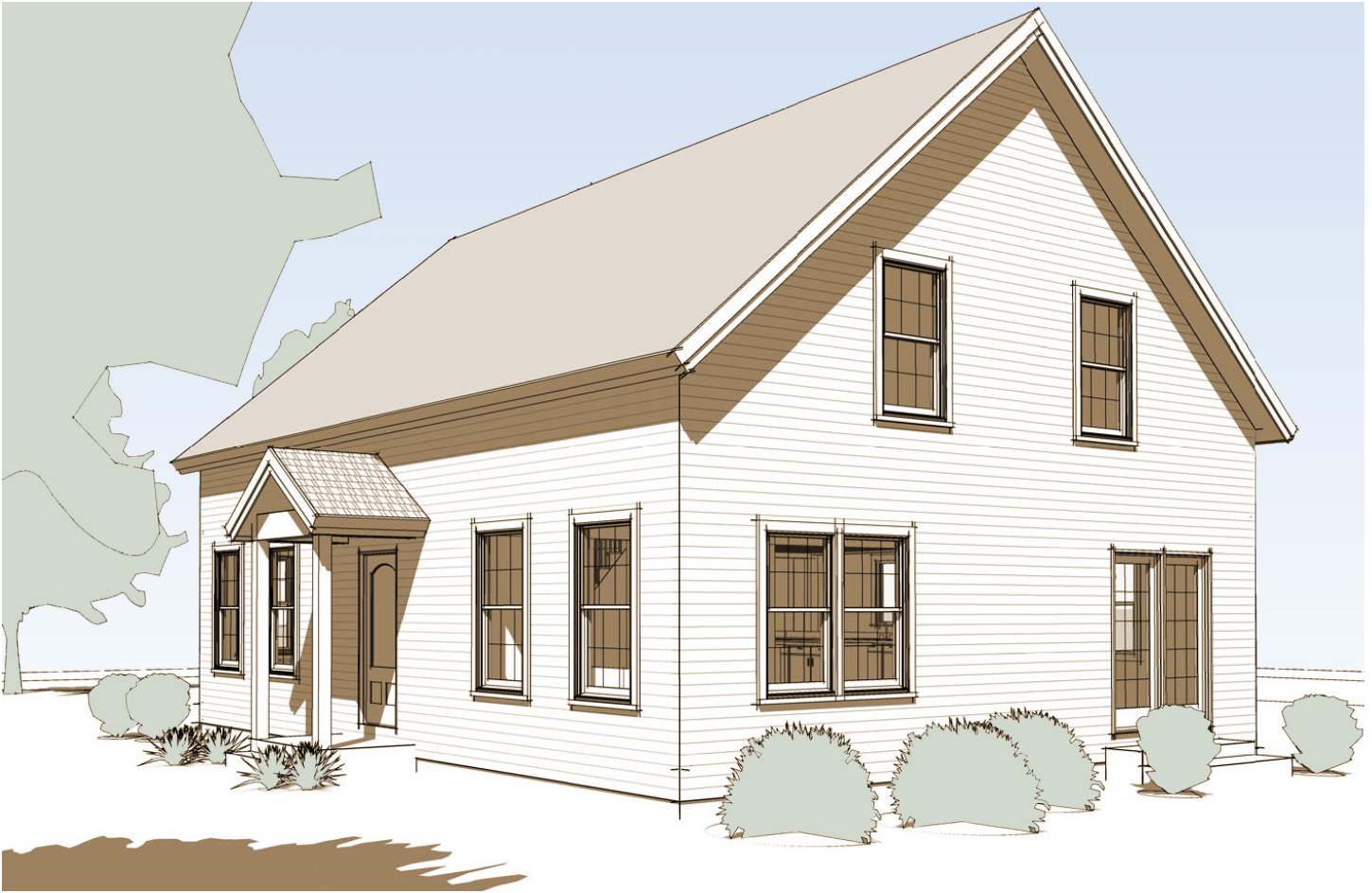


The Harrisville

Room to breathe



Togetherness is a goal we all aspire to. But sometimes, we need to divide and conquer. The traditional family dinner is what memories are made of, but there's always work that we need to focus on today. In The Harrisville, Mom can focus in the study for a couple of hours after dinner while the rest of the family handles the dishes, and an exit to

the outdoors on a warm summer night is always just a few steps away.

The large master bedroom offers a refuge from the busyness of the day, with room for large closets, a sitting area, and a big cozy bed for a peaceful night's sleep.



www.brookspostandbeam.com

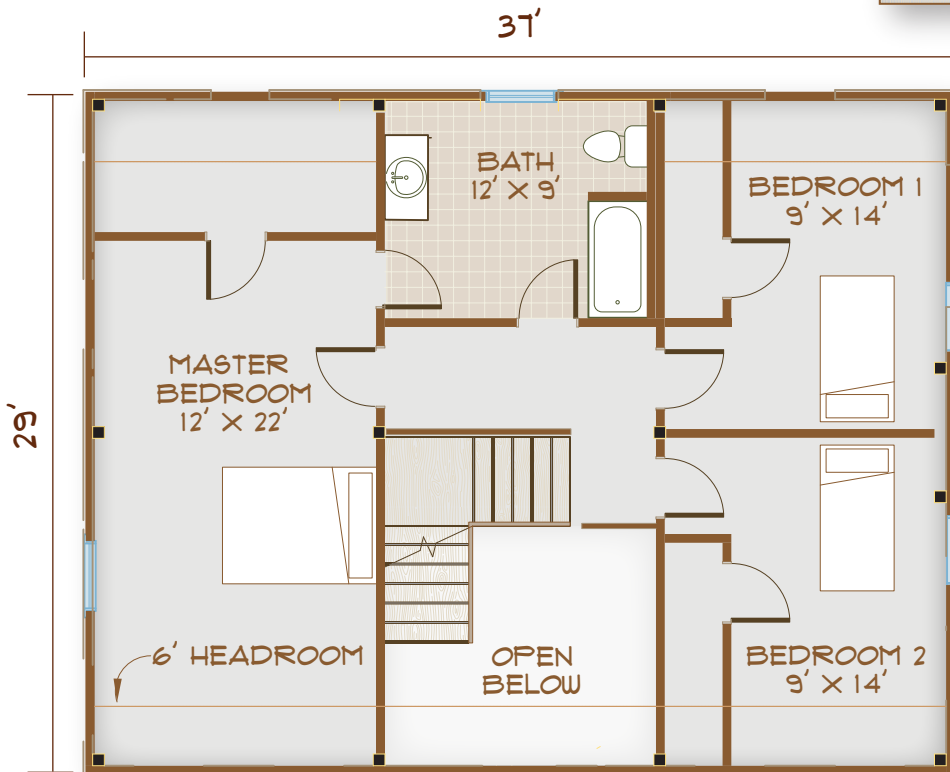
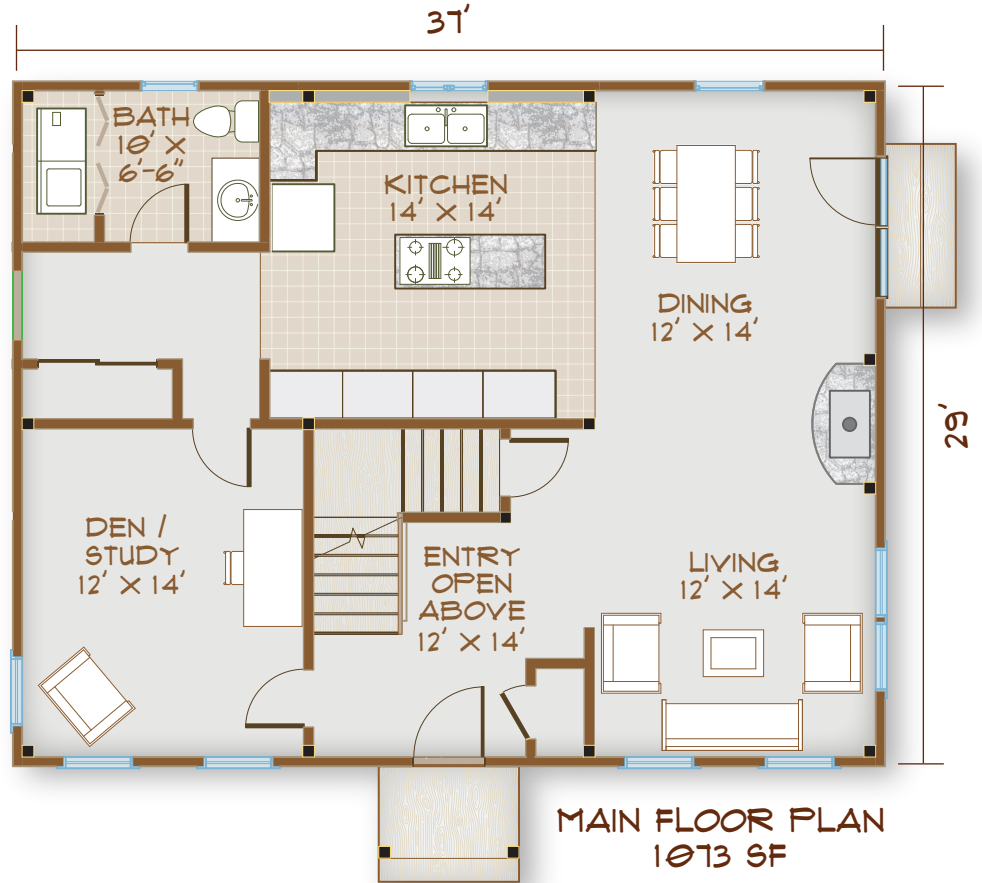
The Harrisville

The Rooms

Split your loyalties between places for quiet time and room to socialize.

The den/study is discreetly set apart from the rest of the house, but with easy access to kitchen, bathroom, and an entrance to the home – perfect for a home office.

The open floor plan encompassing kitchen, dining room, and living room makes cooking, entertaining, and family time a multi-tasking breeze.

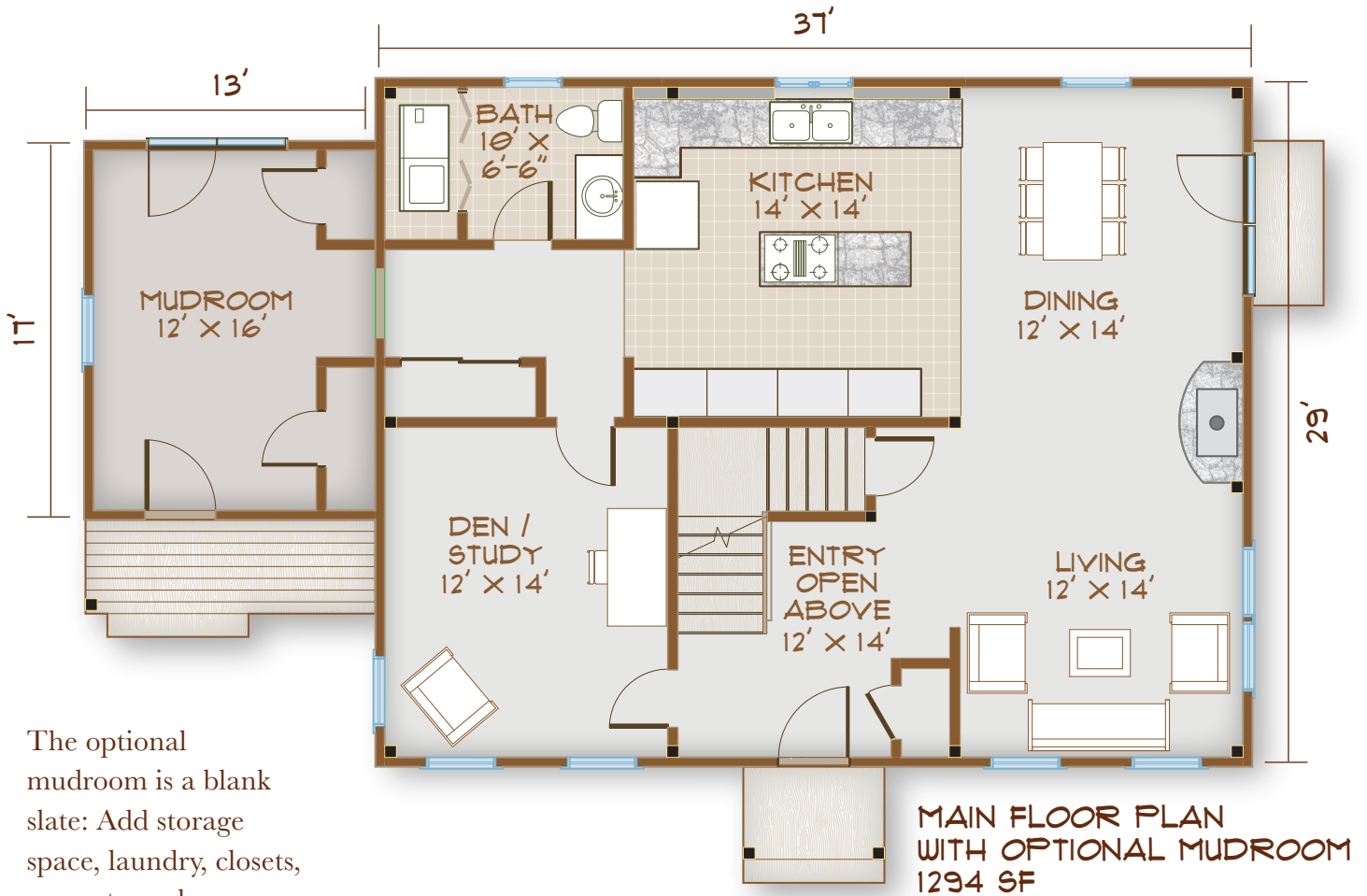


SQUARE FOOTAGE: 2026
(2241 W/MUDROOM OPTION)

BEDROOMS: 3
BATHS: 1 1/2



The Harrisville

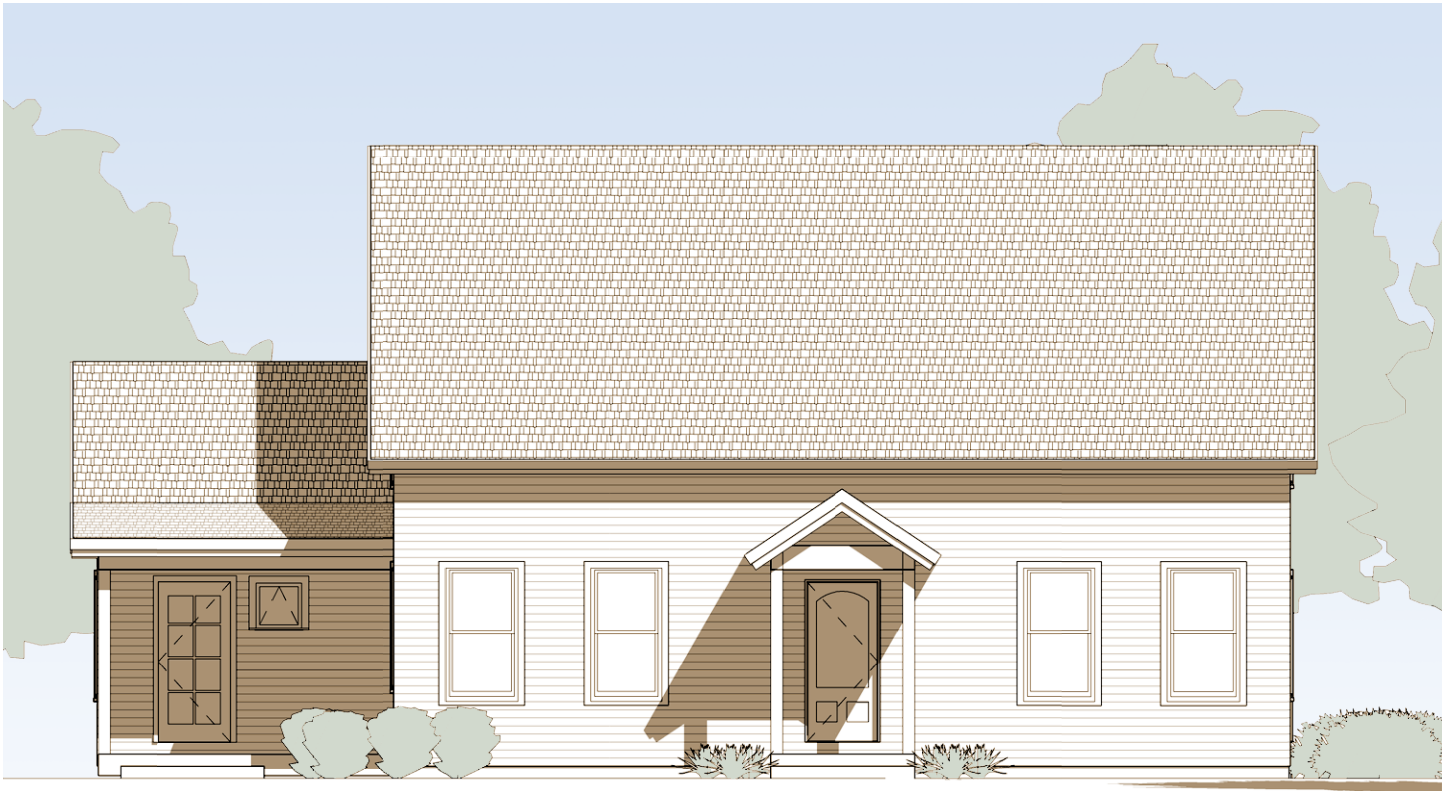


The optional mudroom is a blank slate: Add storage space, laundry, closets, a sweet porch... it's up to you.

VIEW OF REAR
SHOWING 2ND FLOOR
BATH DORMER



The Harrisville



FRONT ELEVATION WITH OPTIONAL MUDROOM



Harrisville:
The beautiful spaciousness you'd expect in a quality timber frame home, but with space to regroup.

603-654-3210 • 208 Pettingill Hill Road, Lyndeborough, NH

