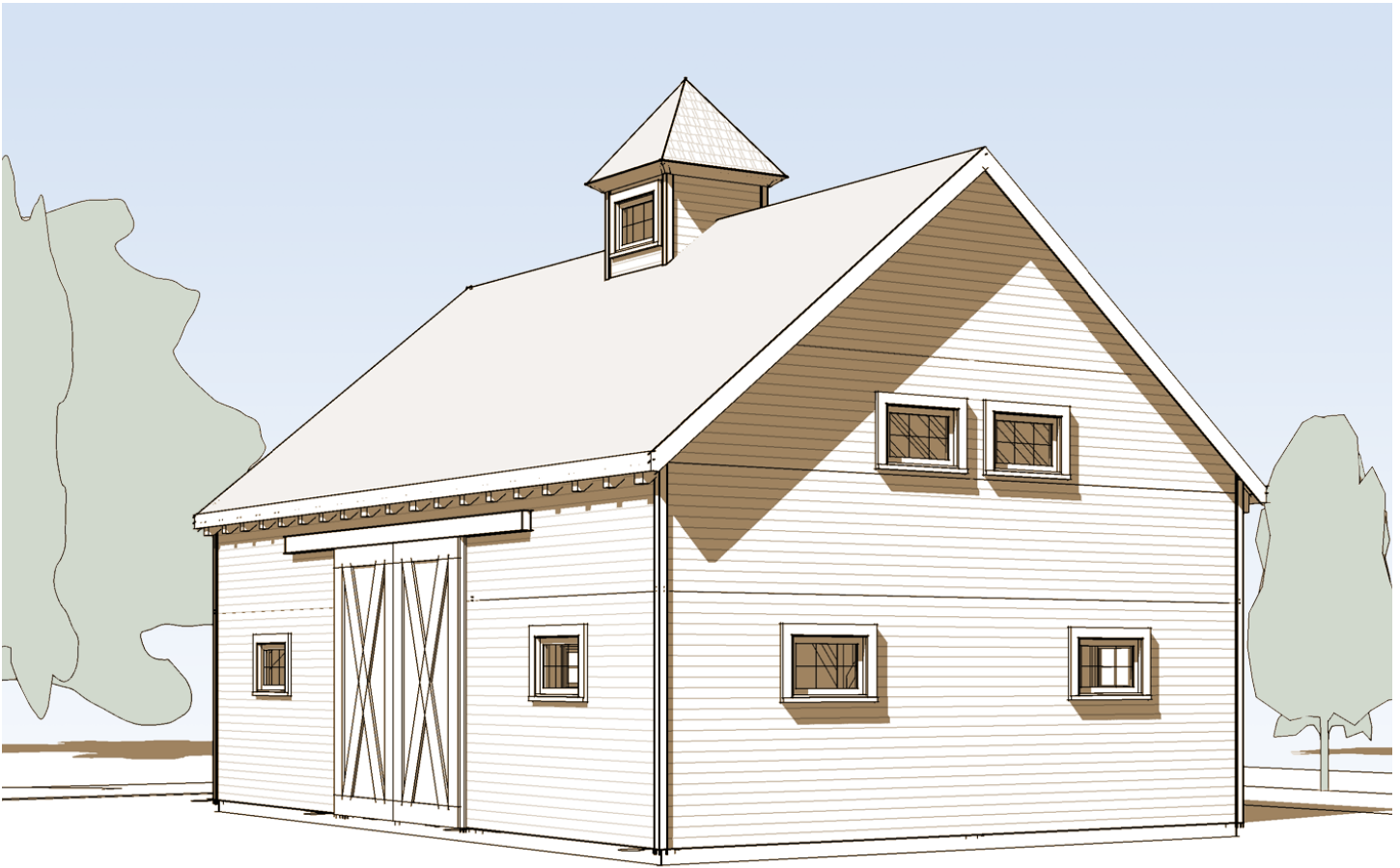


# Jefferson Barn

Time-tested beauty & utility



A classic barn silhouette, shown here with optional cupola. This nicely proportioned 24' x 36', 1-1/2 story barn is equipped with large rolling doors, perfect for farm equipment or mounted riders. The loft provides storage for hay or tools, or a place to work out.

\*\*\*

Barns are where timber frame architecture first showed its usefulness. Whether you need to divide your barn into many stalls for livestock or leave it open to store heavy equipment, a timber frame barn can deliver; with no need for load-bearing walls, you can be flexible.

Timber frame barns are completely at home in a rural environment. They've been a part of the

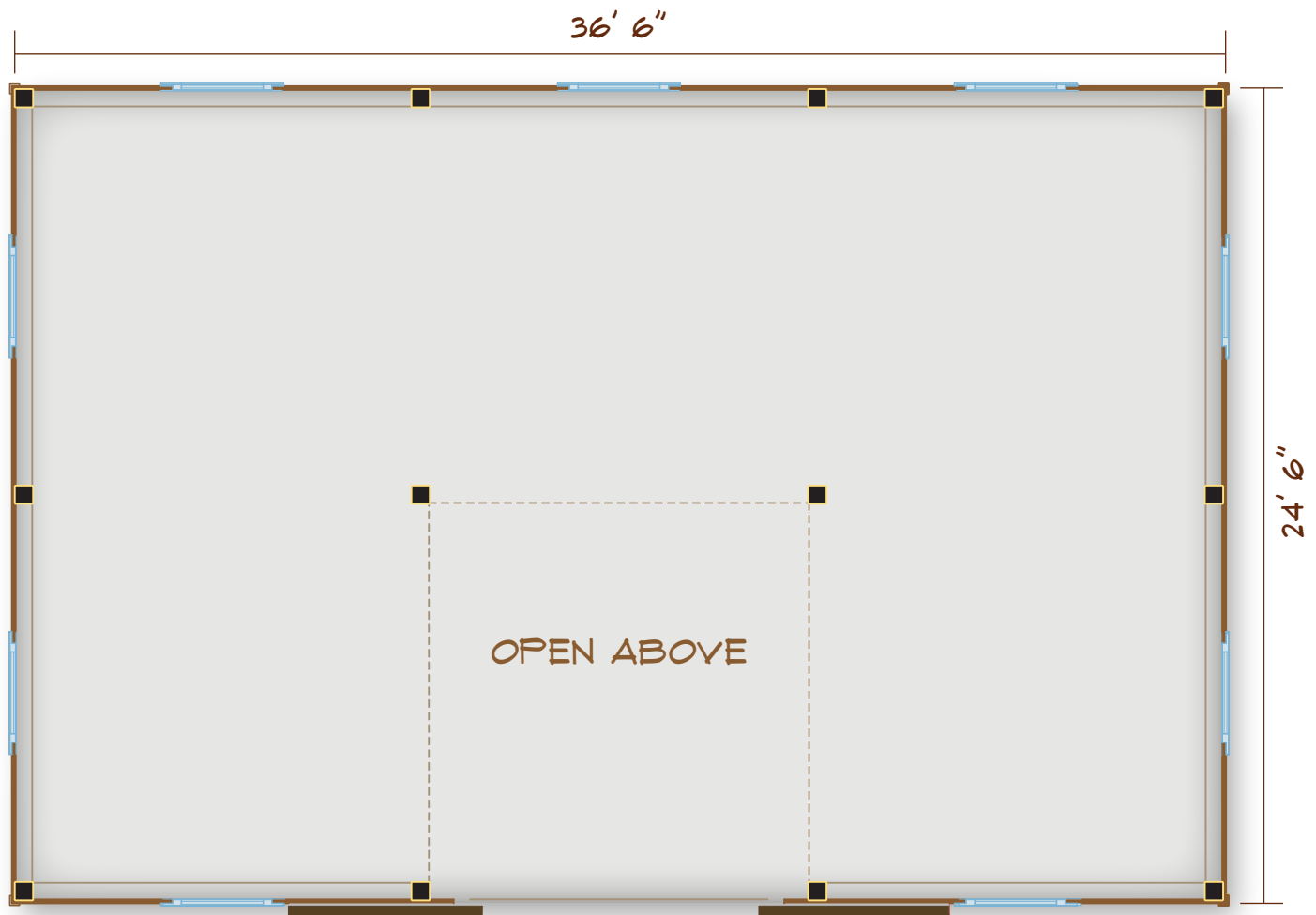


[www.brookspostandbeam.com](http://www.brookspostandbeam.com)

# Jefferson Barn

New England geography for centuries, after all! Brooks Post & Beam barns and garages are made primarily of native New Hampshire lumber; the walls can be composed of a simple, affordable layer of shiplap boards, just as they were 100 years ago!

And while any timber frame structure will allow for flexibility, a barn can be even more versatile and responsive over time as your needs change. Just move your partitions if you decide you want to turn your horse stalls into a parking area, apartment or art studio!

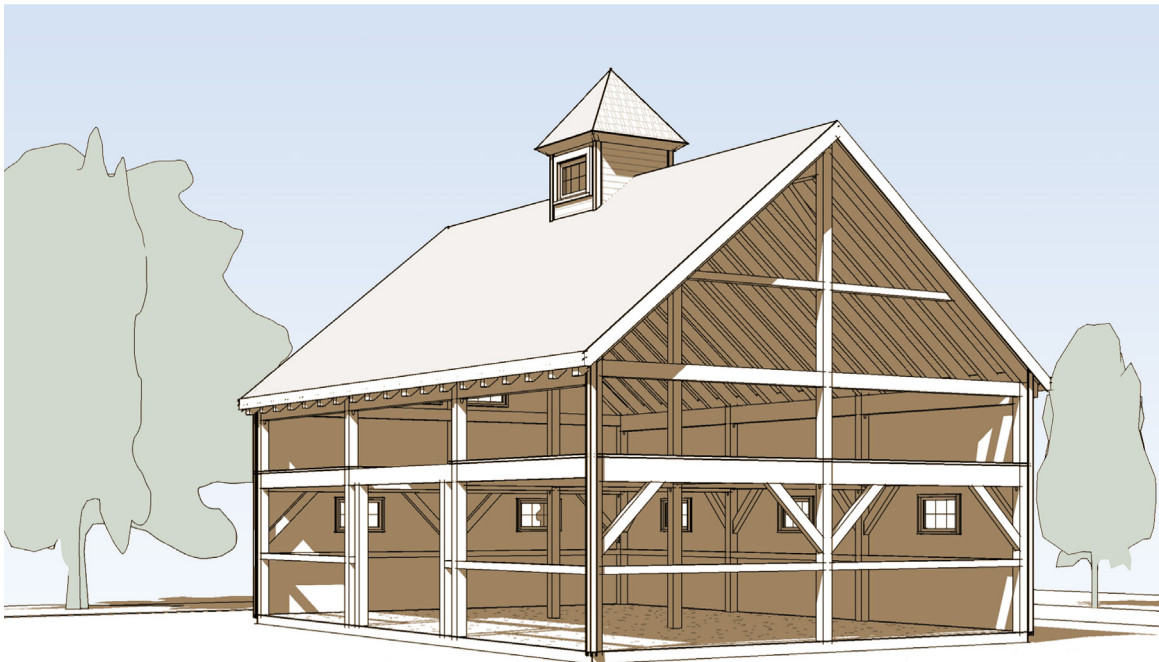
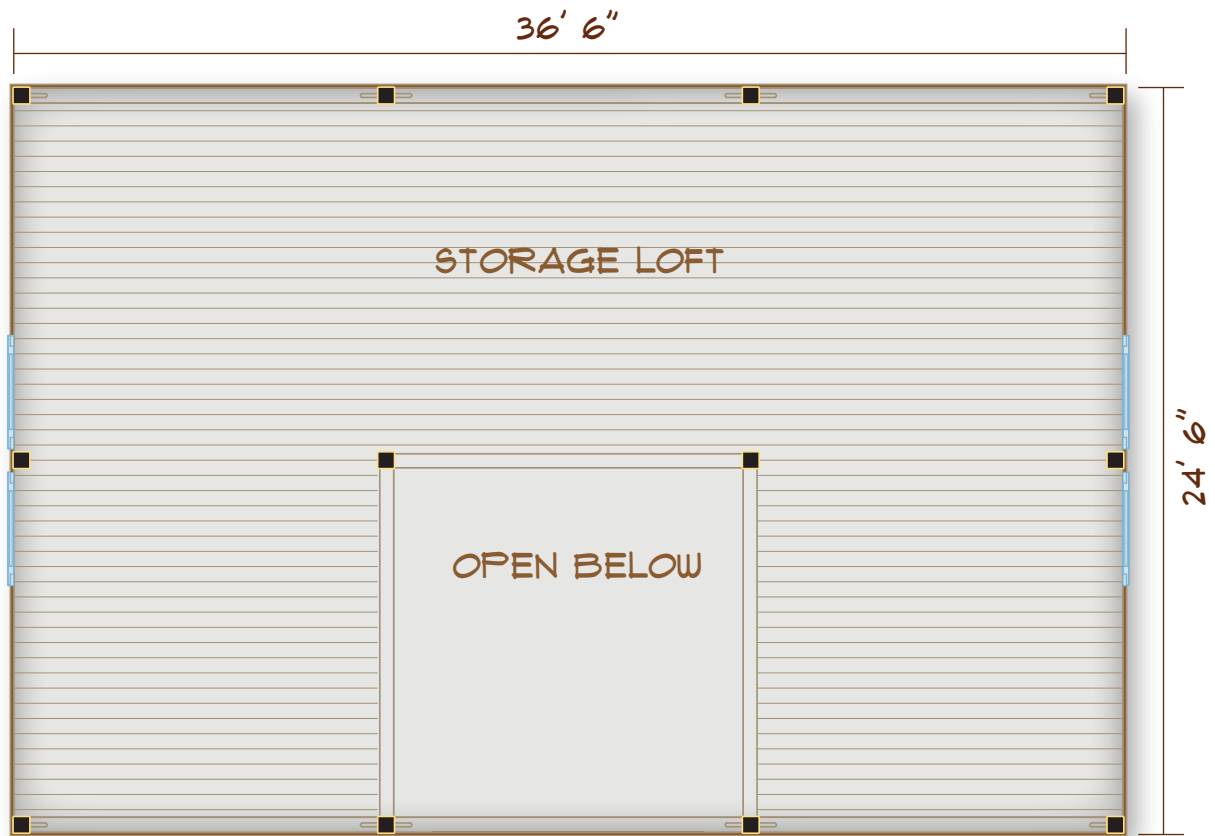


MAIN FLOOR PLAN  
894 SF

TOTAL SQUARE  
FOOTAGE: 1618

# Jefferson Barn

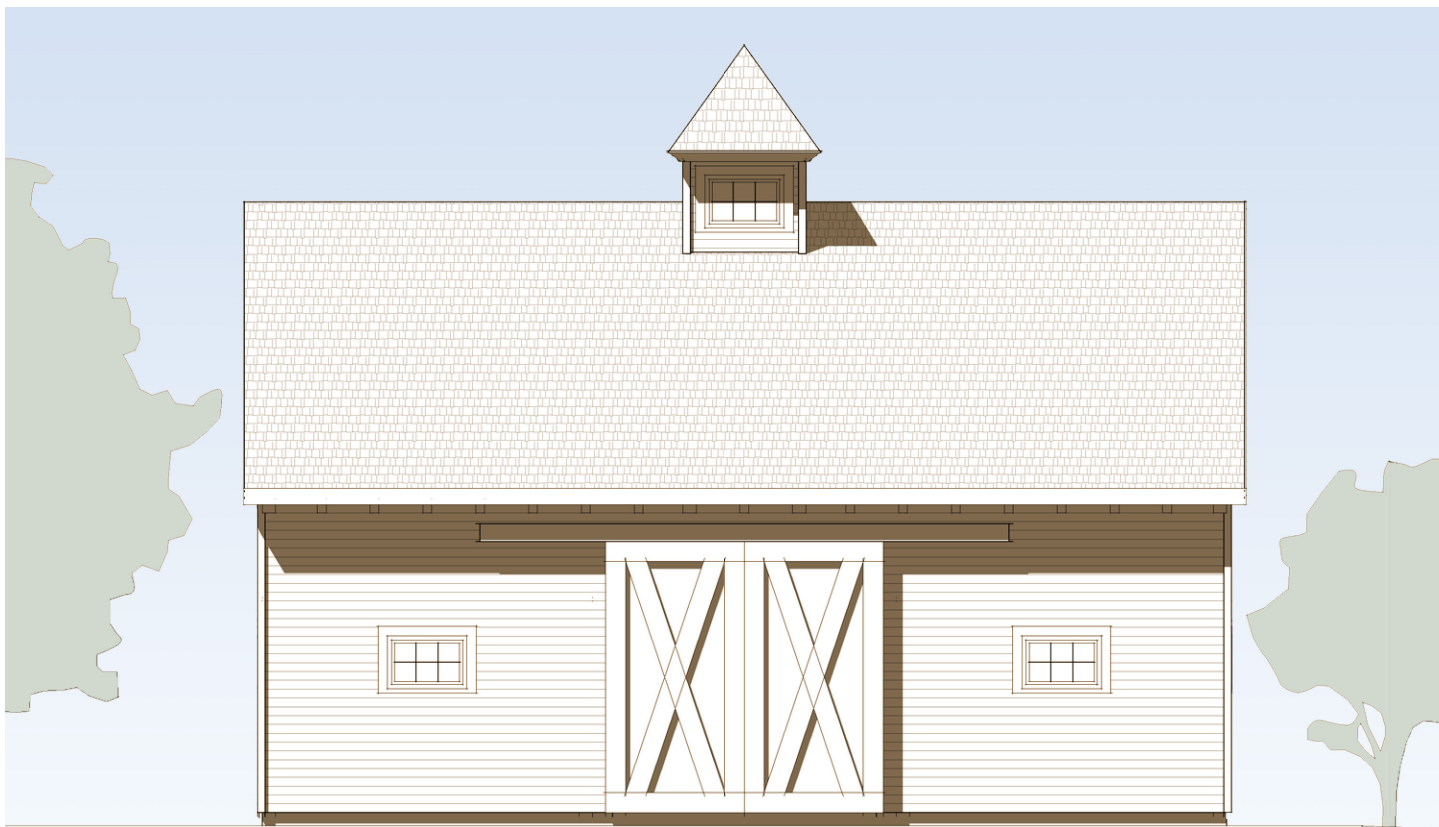
UPPER  
FLOOR PLAN  
724 SF



INTERIOR  
FRAME VIEW



# Jefferson Barn



FRONT ELEVATION



**Brooks**  
Post & Beam barns:  
Where it all started.

603-654-3210 • 208 Pettingill Hill Road, Lyndeborough, NH

