

# The Lakefront

Many rooms with a view



FRONT VIEW

Capture the best of your surroundings – whether it's a lake, a mountain range, or a city skyline – and bring it into your own private world of The Lakefront.

Generous windows allow you to enjoy your view from almost every airy room in this home. Or, choose to have dinner on the screen porch, with its grilling deck, or drink your morning coffee on the master bedroom deck. The first floor of The

Lakefront is a blend of private areas – the only windows to the master deck are in the master bedroom – and a large common area perfect for entertaining or family time. The second-floor bedrooms are buffered by balcony space, along with a loft office overlooking the rest of the home. Or, with a small alteration, the office could serve as a fourth bedroom!

Add a garage connected by a mudroom and a walkout basement, and The Lakefront covers all the bases.



[www.brookspostandbeam.com](http://www.brookspostandbeam.com)

# The Lakefront

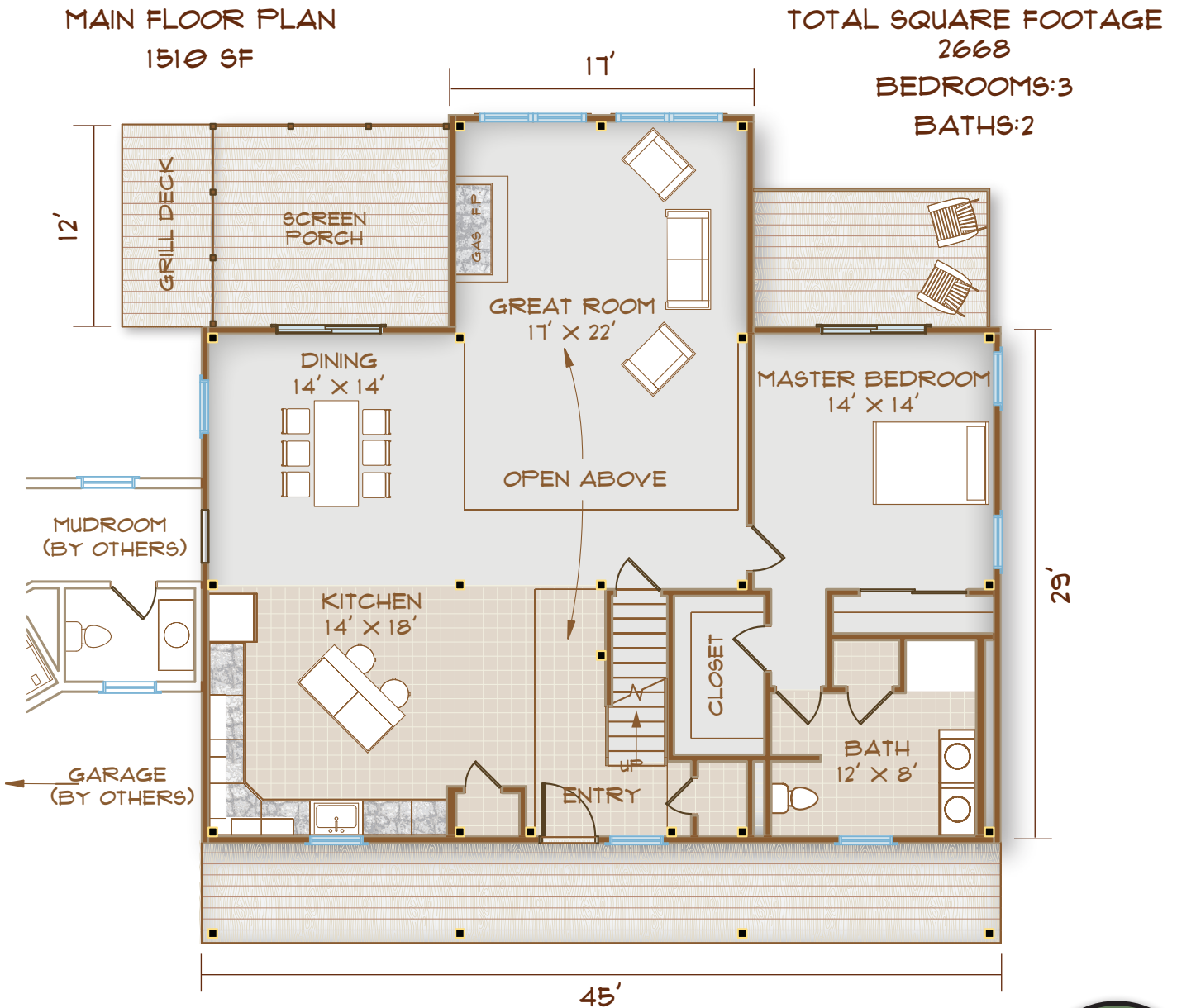
## The Rooms

The Great Room is aptly named – it's nearly 400 square feet and soars right to the roof. With the kitchen and dining room adjacent, this airy space is perfect for entertaining.

The first-floor master suite offers breathtaking scenery and a private deck. This feature means your

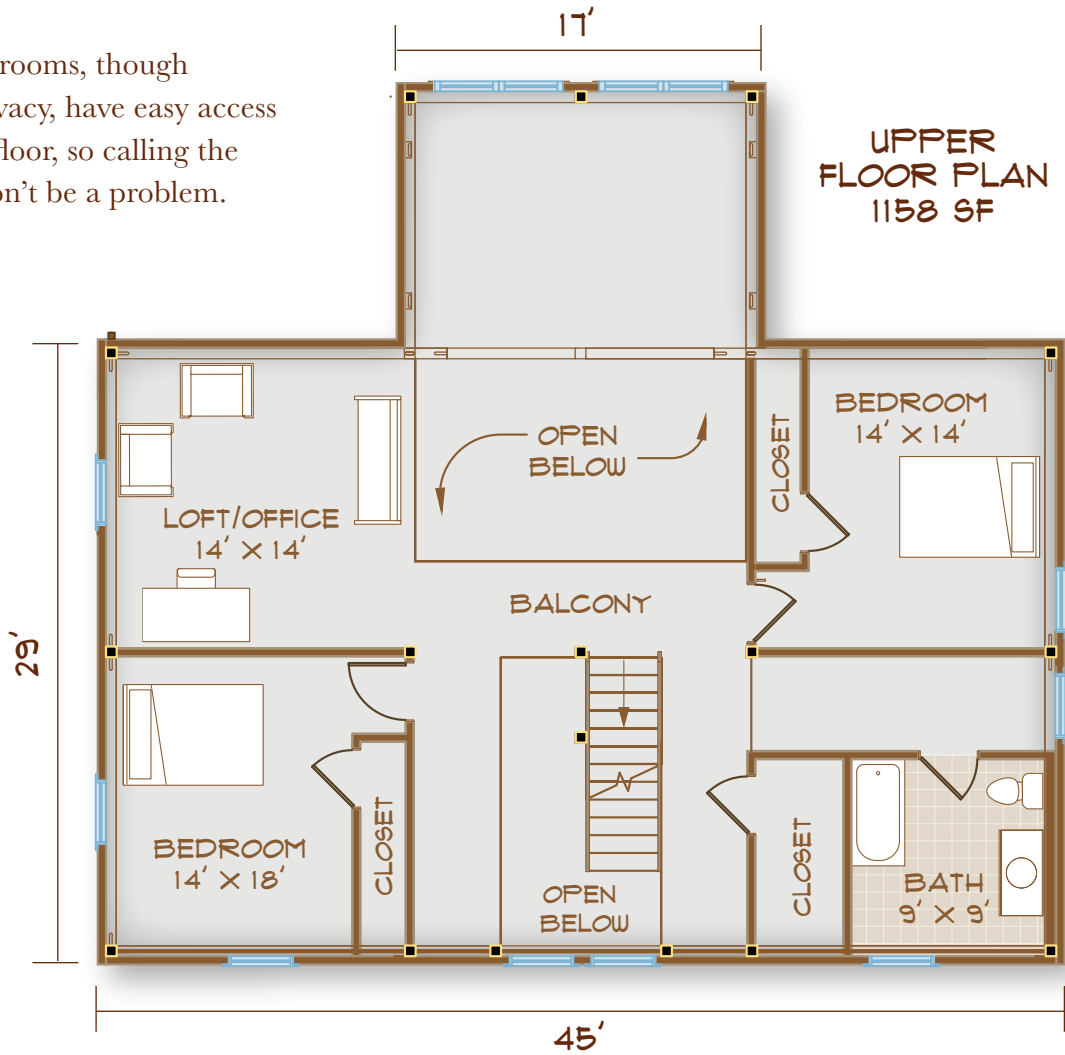
dream house can remain your dream, even in later years when stairs could become an issue.

There's no shortage of space in the kitchen and dining areas, which can accommodate a large dinner party or simply a big and boisterous family!

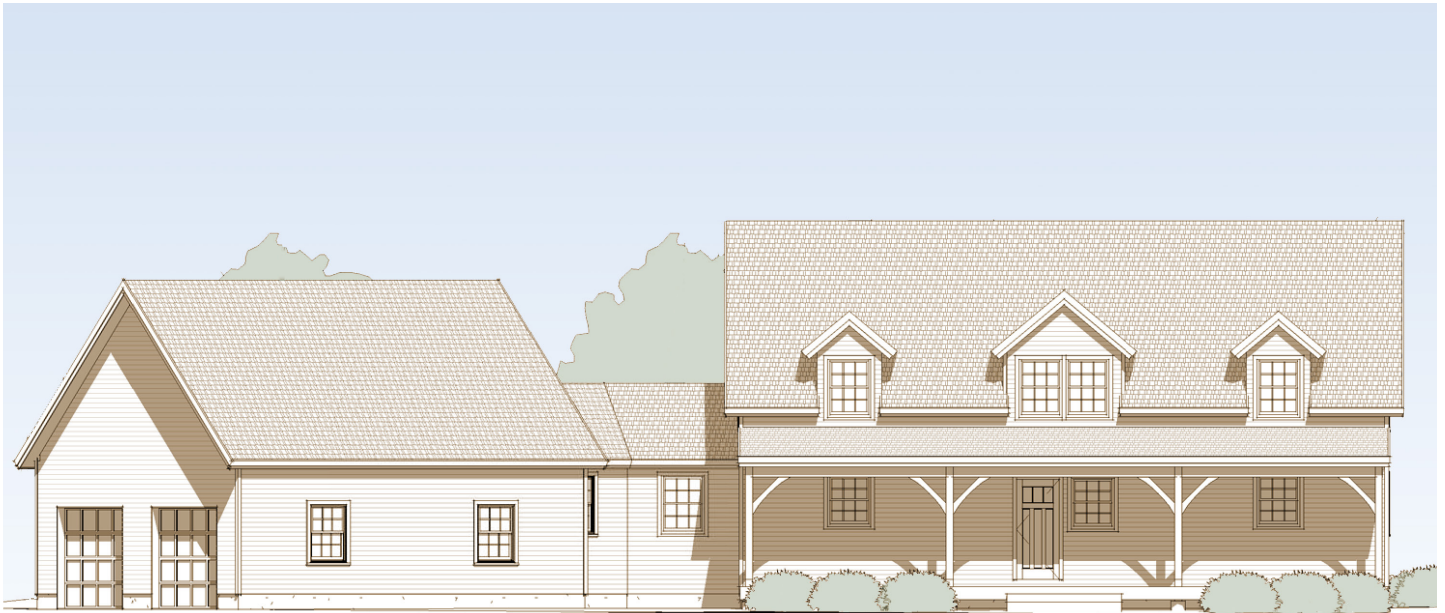


# The Lakefront

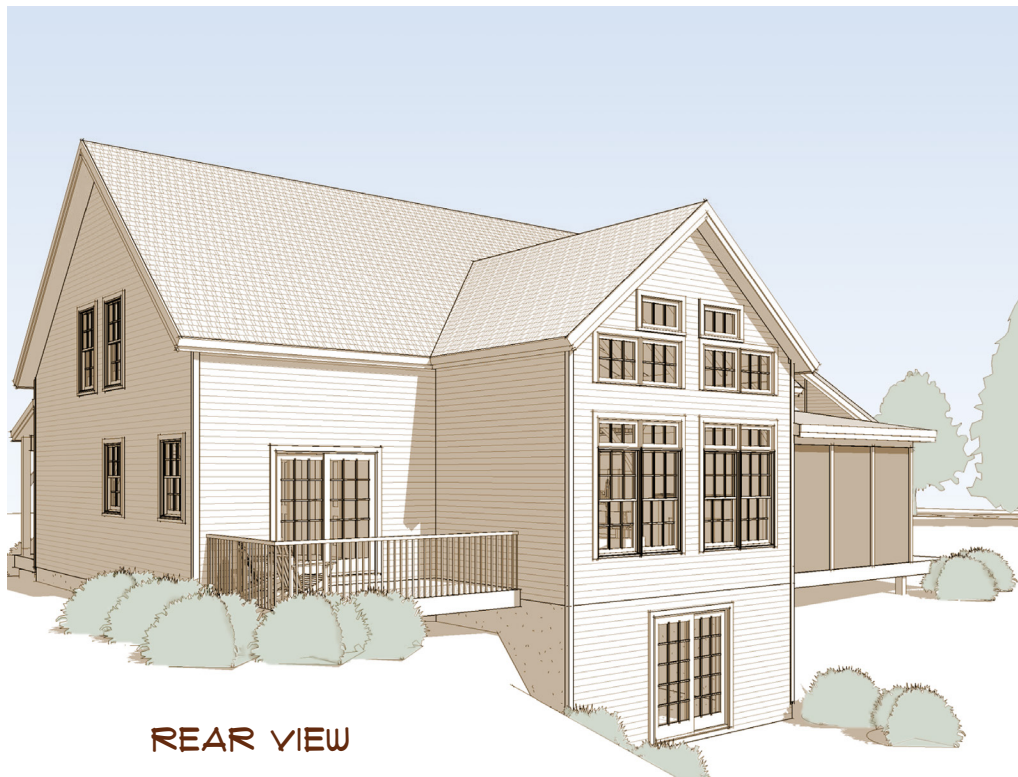
The upstairs bedrooms, though allowed their privacy, have easy access to the open first floor, so calling the kids to dinner won't be a problem.



# The Lakefront



FRONT ELEVATION



REAR VIEW

**The Lakefront:  
Practical living in  
unlikely places.**

603-654-3210 • 208 Pettingill Hill Road, Lyndeborough, NH

