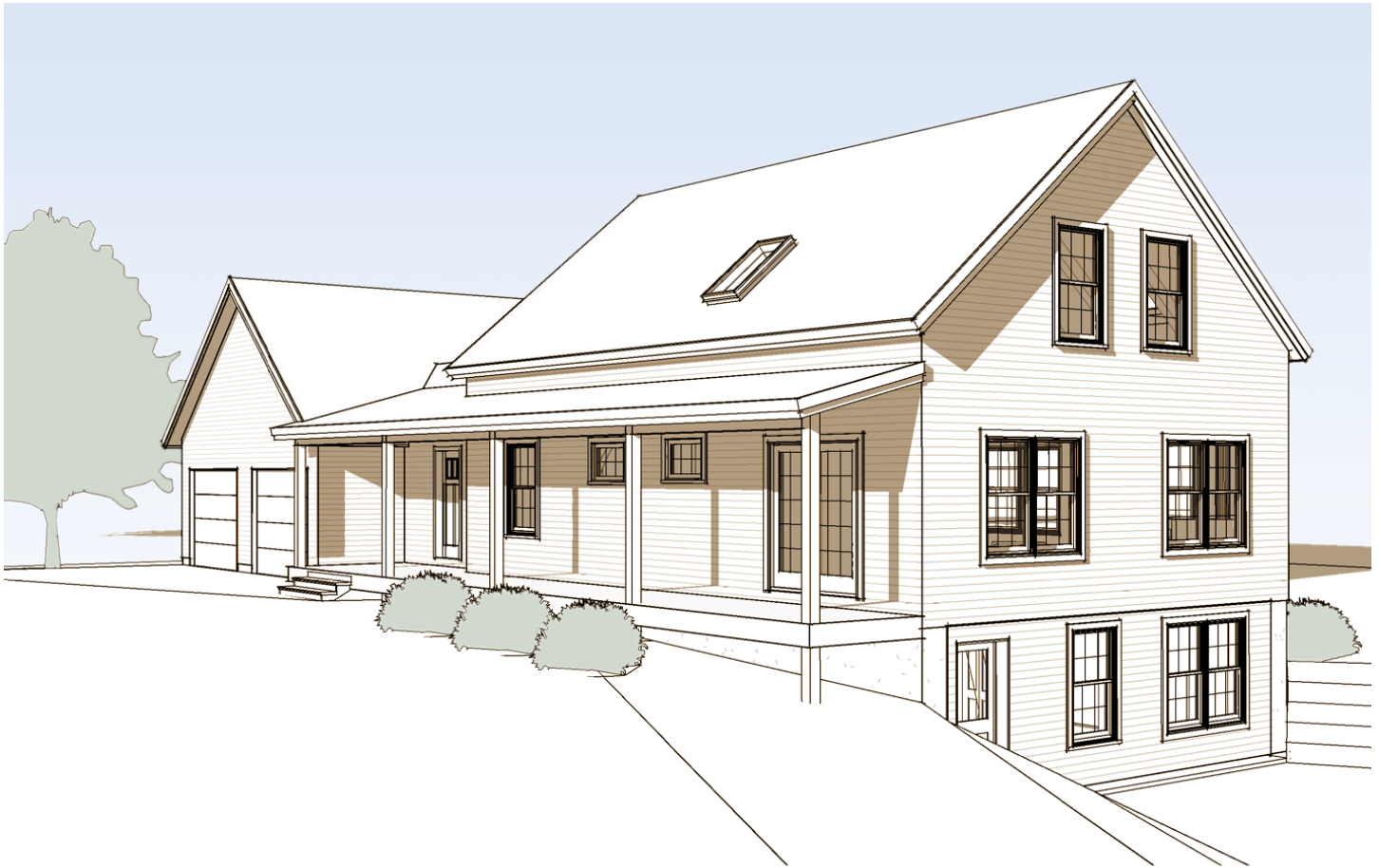


The Monadnock with Garage



When we choose a home site, views are top of mind. So why close ourselves off from the outdoors when we put up the walls of our dream home?

Named after the scenic standalone mountain in southern New Hampshire, The Monadnock, especially, recognizes its role in helping its occupants appreciate the natural world around them. It was designed to serve as a companion to the home site, full of large windows, skylights and a deck.

The garage option of this popular design features a two-bay garage with potential storage on the second floor.

Even the large entry way takes into account the outdoor life, with plenty of room to remove muddy hiking boots, cross-country skis, and warm layers.

A walkout basement offers convenient access to the home's systems, as well as a bonus room.



www.brookspostandbeam.com

The Monadnock

The Rooms

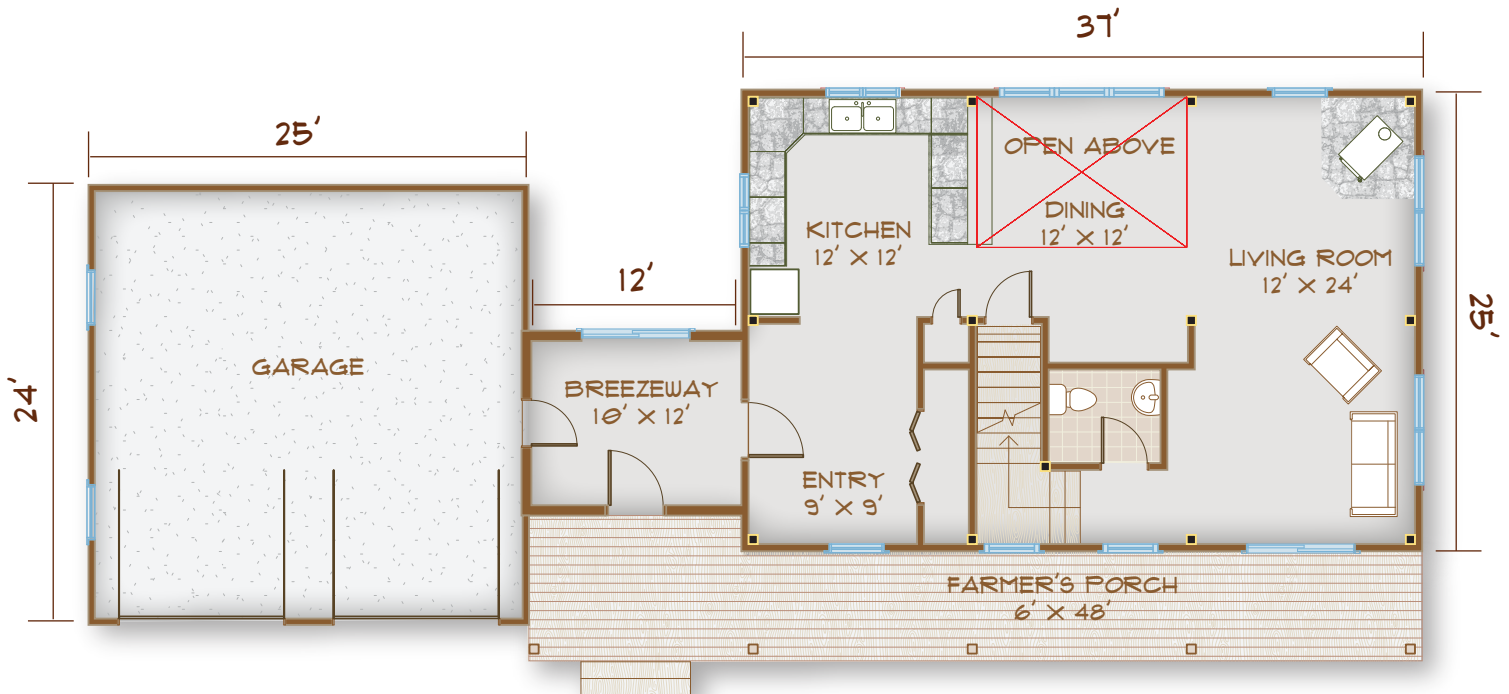
Enjoy sunlight, open spaces, and an appreciation of the outdoors.

Eat under a light-drenched, two-story ceiling in the dining room, conveniently adjacent to both the kitchen and an expansive living room.

The main entry doubles as a mud room – a little help keeping the floors clean!

Through a breezeway there's a garage big enough – at 25' x 24' – to accommodate two large vehicles and a whole lot more!

And a farmer's porch spans the whole front of the house, providing plenty of room for rocking chairs and even a hammock!



BARN
600 SF

**TOTAL HOUSE
SQUARE FOOTAGE**
(NOT INCLUDING BASEMENT)
1870

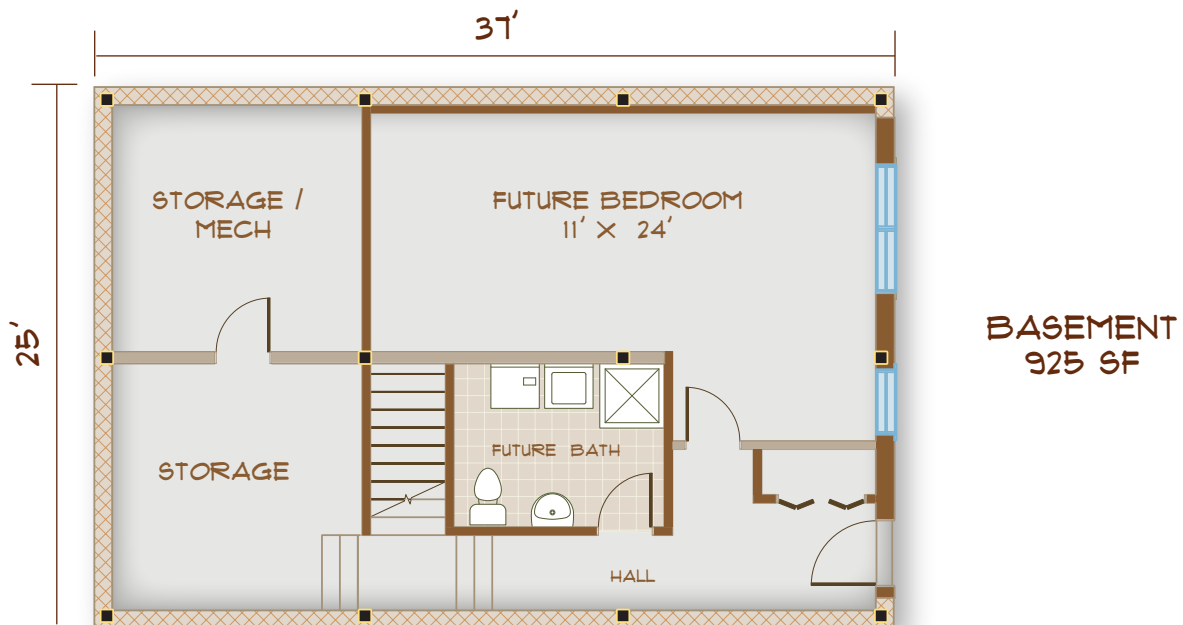
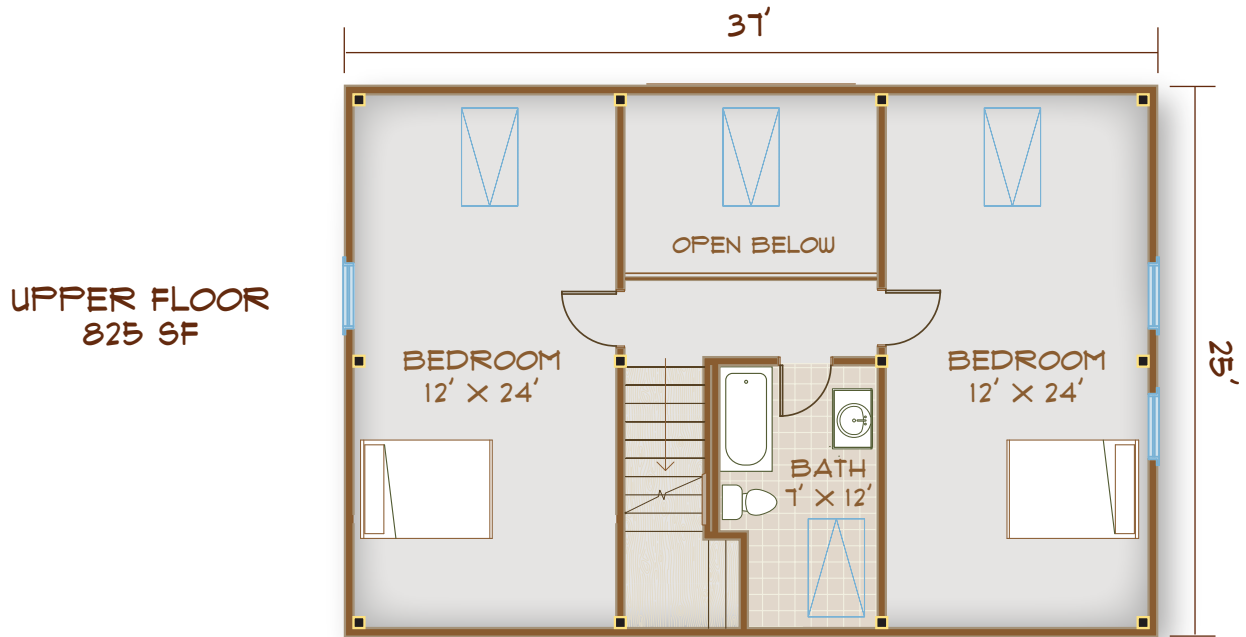
BEDROOMS: 2 OR 3
BATHS: 1.5 OR 2.5

MAIN FLOOR
925 SF

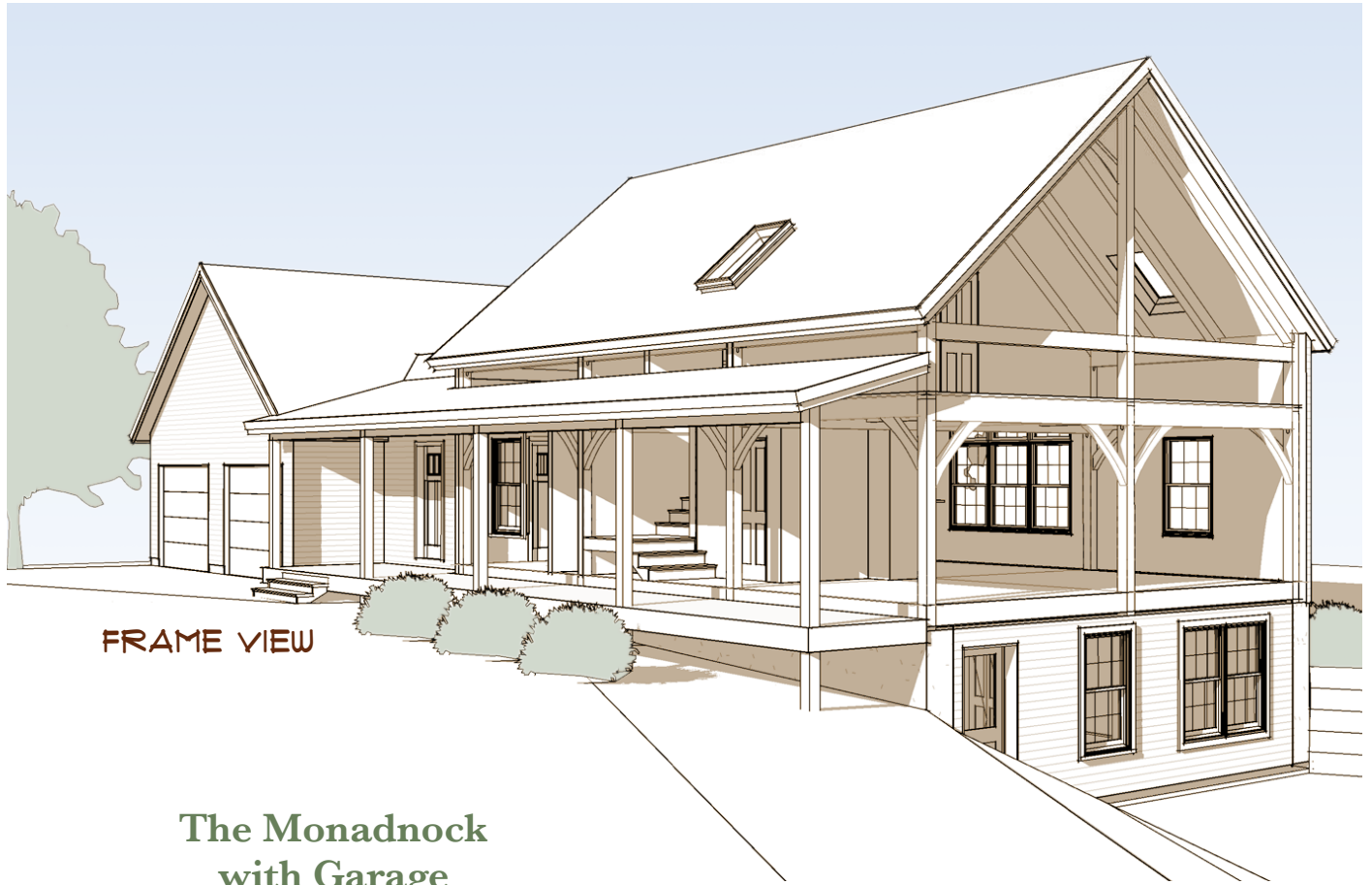
The Monadnock

Both bedrooms and the bathroom on the second floor receive natural light from skylights and offer plenty of room to stretch out.

The walkout basement includes a large bedroom (or bonus room) and full bath with a separate entrance.



The Monadnock



The Monadnock
with Garage



FRONT ELEVATION

603-654-3210 • 208 Pettingill Hill Road, Lyndeborough, NH

