

The Temple

A hillside haven



CORNER VIEW WITH OPTIONAL FARMER'S PORCH

The Temple is all about easy living. Open, flexible spaces include an eat-in kitchen and fireplaced living room, along with a large loft taking in the view below.

Wrap The Temple in charm and fresh air with a farmer's porch, then just add your favorite rocking chairs and the morning coffee.

Sleep on the main floor or upstairs, where you should feel free to expand the bedroom into the loft area.



www.brookspostandbeam.com

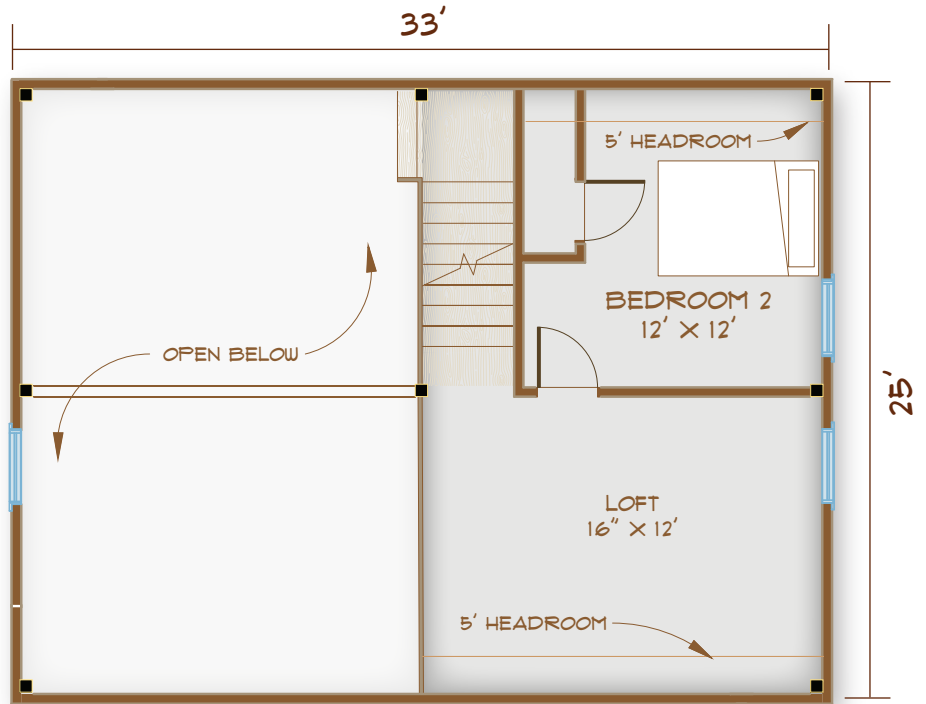
The Temple

The Rooms

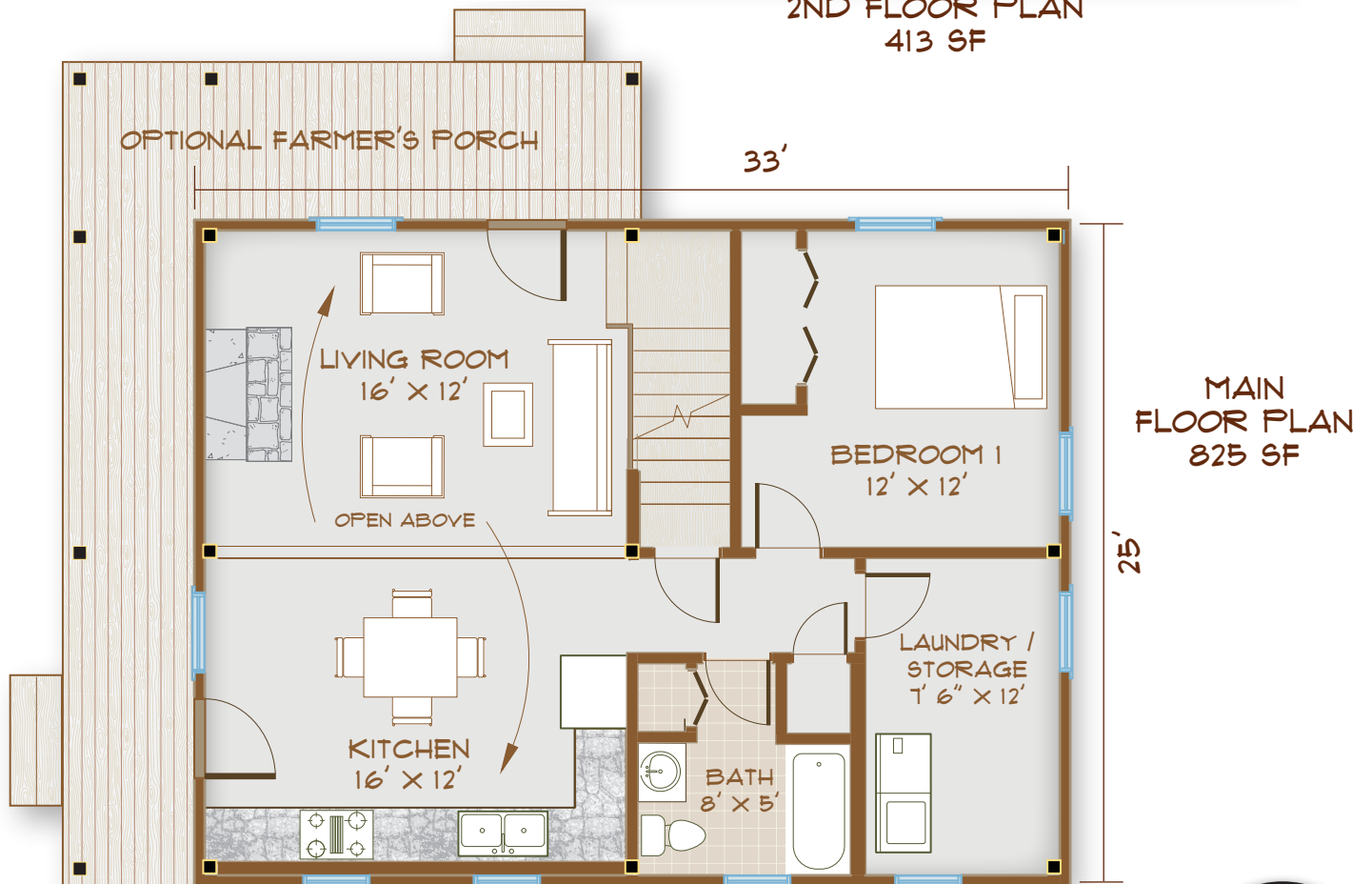
The loft can double as a reading area or office; with this much space it can be both! Or make this a sleeping area for visiting grands.

Laundry on the main floor means no hauling baskets up and down stairs.

SQUARE FOOTAGE: 1238
(2063 W/FINISHED BASEMENT)
BEDROOMS: 2 OR 3
BATHS: 1



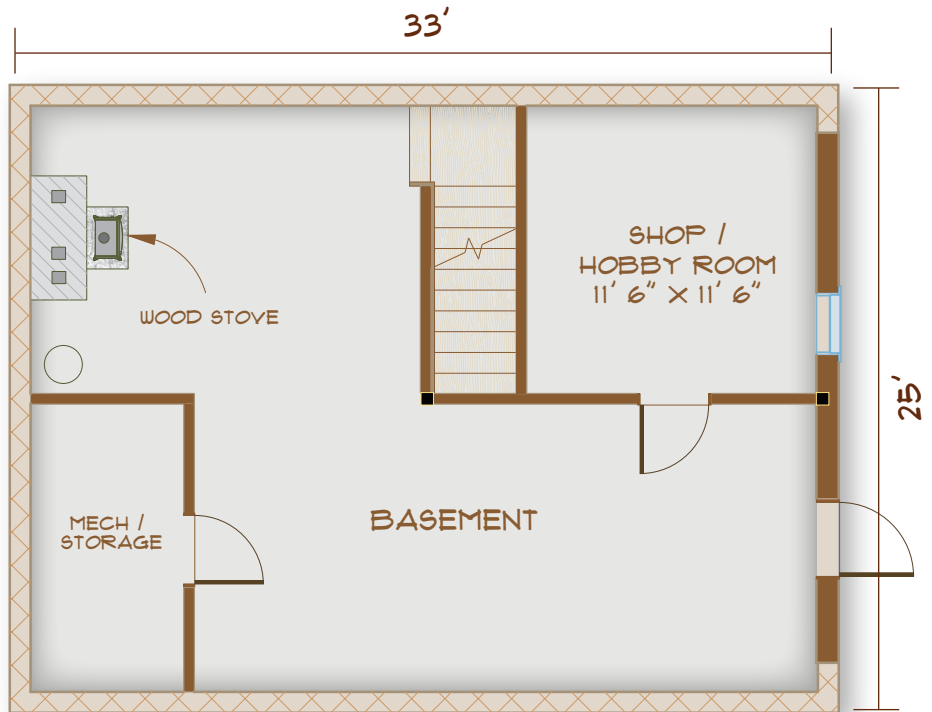
2ND FLOOR PLAN
413 SF



MAIN FLOOR PLAN
825 SF

The Temple

A full walkout basement presents options for both a small workspace and a large project area – crafts and woodworking, anyone? Plus, a mechanical room and the perfect spot for a cozy woodstove.



**BASEMENT FLOOR PLAN WITH
WALK-OUT OPTION
825 SF**

**CORNER VIEW WITH
WALK-OUT BASEMENT
AND FARMER'S
PORCH OPTIONS**



The Temple



SIDE ELEVATION SHOWING OPTIONAL FARMER'S PORCH



Live a life
of clean
simplicity
in Temple.

603-654-3210 • 208 Pettingill Hill Road, Lyndeborough, NH

