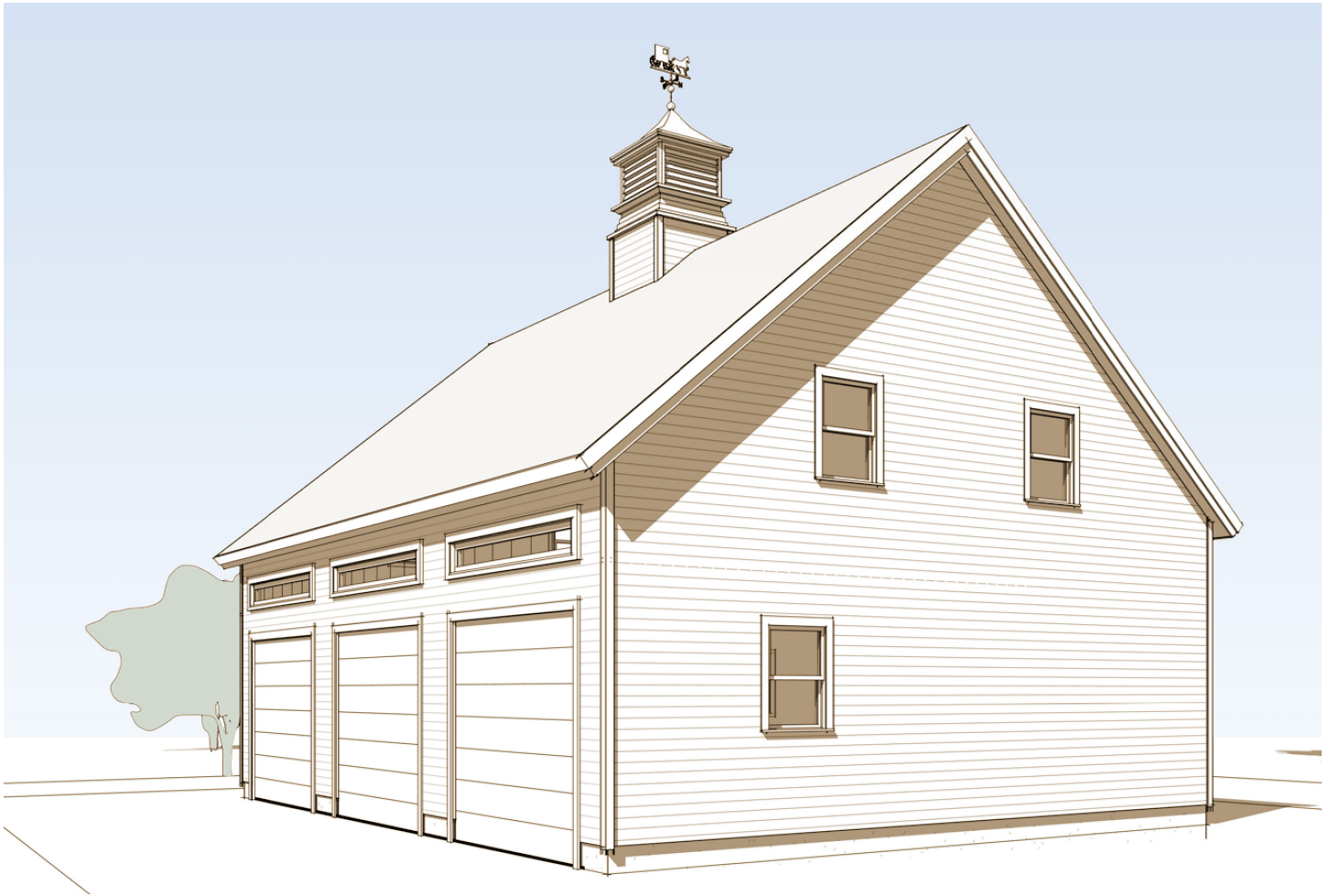


Whiteface Barn

Takes the garage to a new level



This 28' x 36' design comes in the shape of a historic barn, but is configured for three-bay parking. The sizable loft can be used for storage, or as a large office or workout area. An optional cupola is also available.

Barns are where timber frame architecture first showed its usefulness. Whether you need to divide

your barn into many stalls for livestock or leave it open to store heavy equipment, a timber frame barn can deliver; with no need for load-bearing walls, you can be flexible.

Timber frame barns are completely at home in a rural environment. They've been a part of the New England geography for centuries, after all! Brooks Post & Beam barns and garages are made primarily



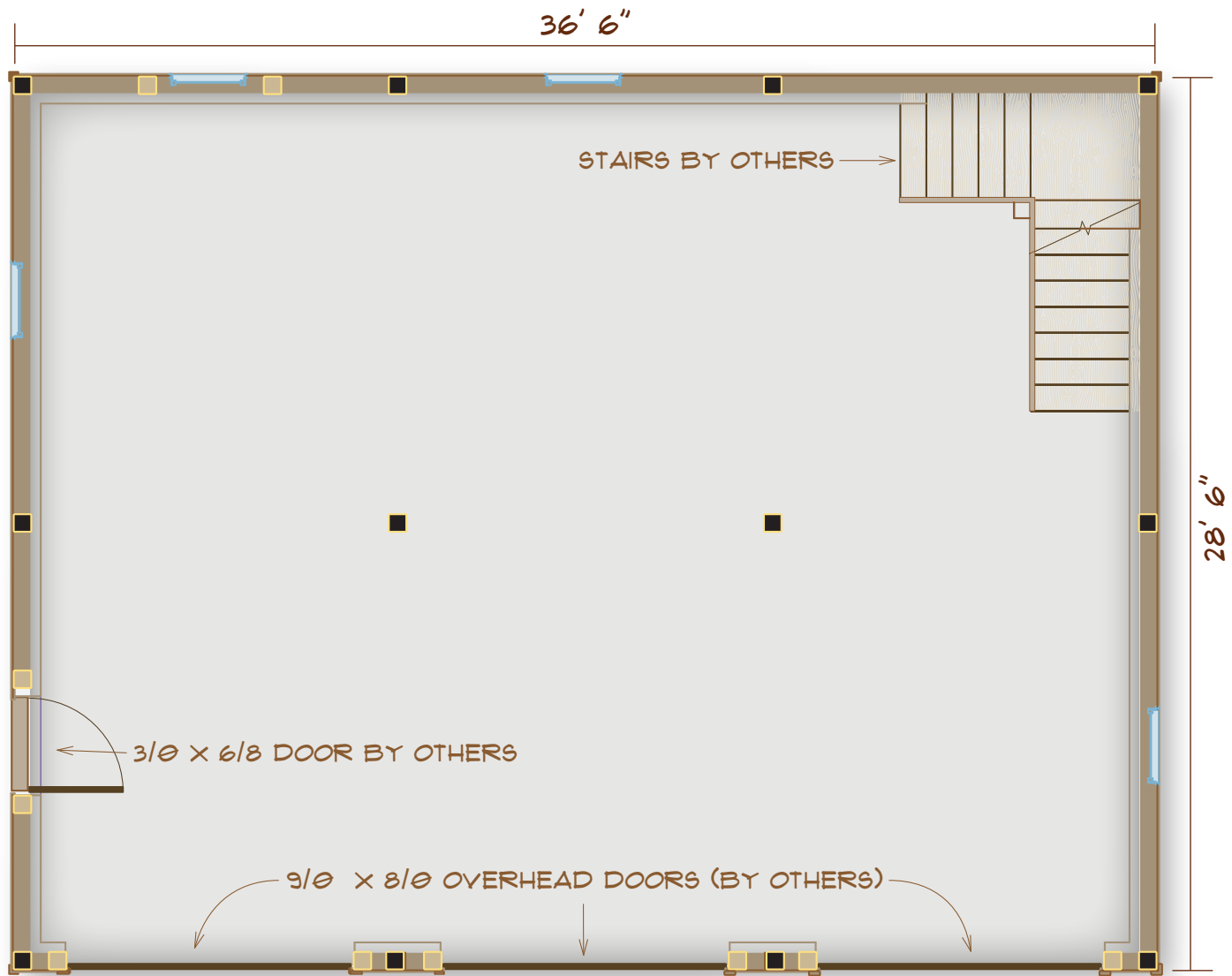
www.brookspostandbeam.com

Whiteface Barn

of native New Hampshire lumber; the walls can be composed of a simple, affordable layer of shiplap boards, just as they were 100 years ago!

And while any timber frame structure will allow

for flexibility, a barn can be even more versatile and responsive over time as your needs change. Just move your partitions to turn your parking area into horse stalls, apartment or art studio!



MAIN FLOOR PLAN

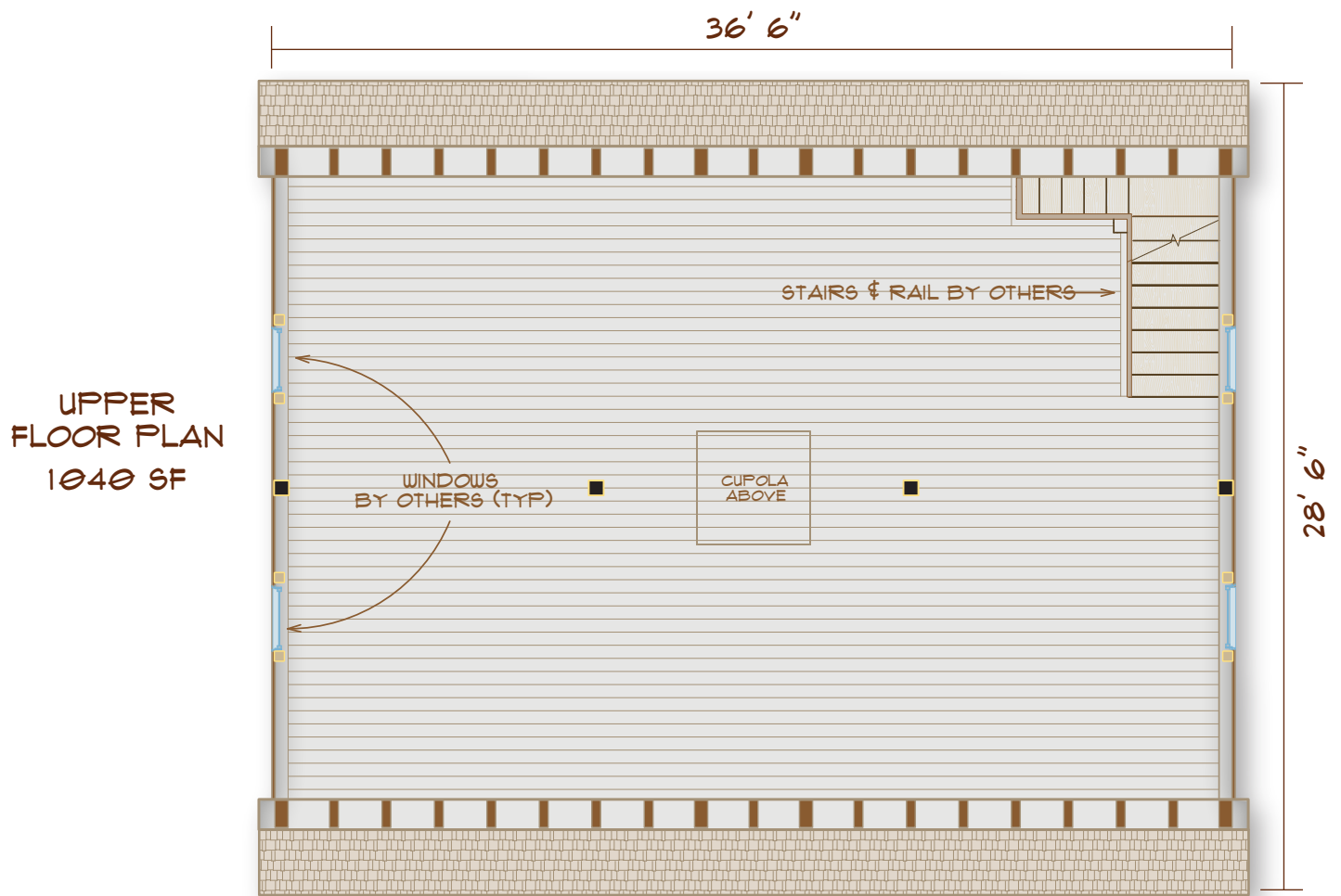
1040 SF

TOTAL SQUARE
FOOTAGE: 2080

603-654-3210 • 208 Pettingill Hill Road, Lyndeborough, NH



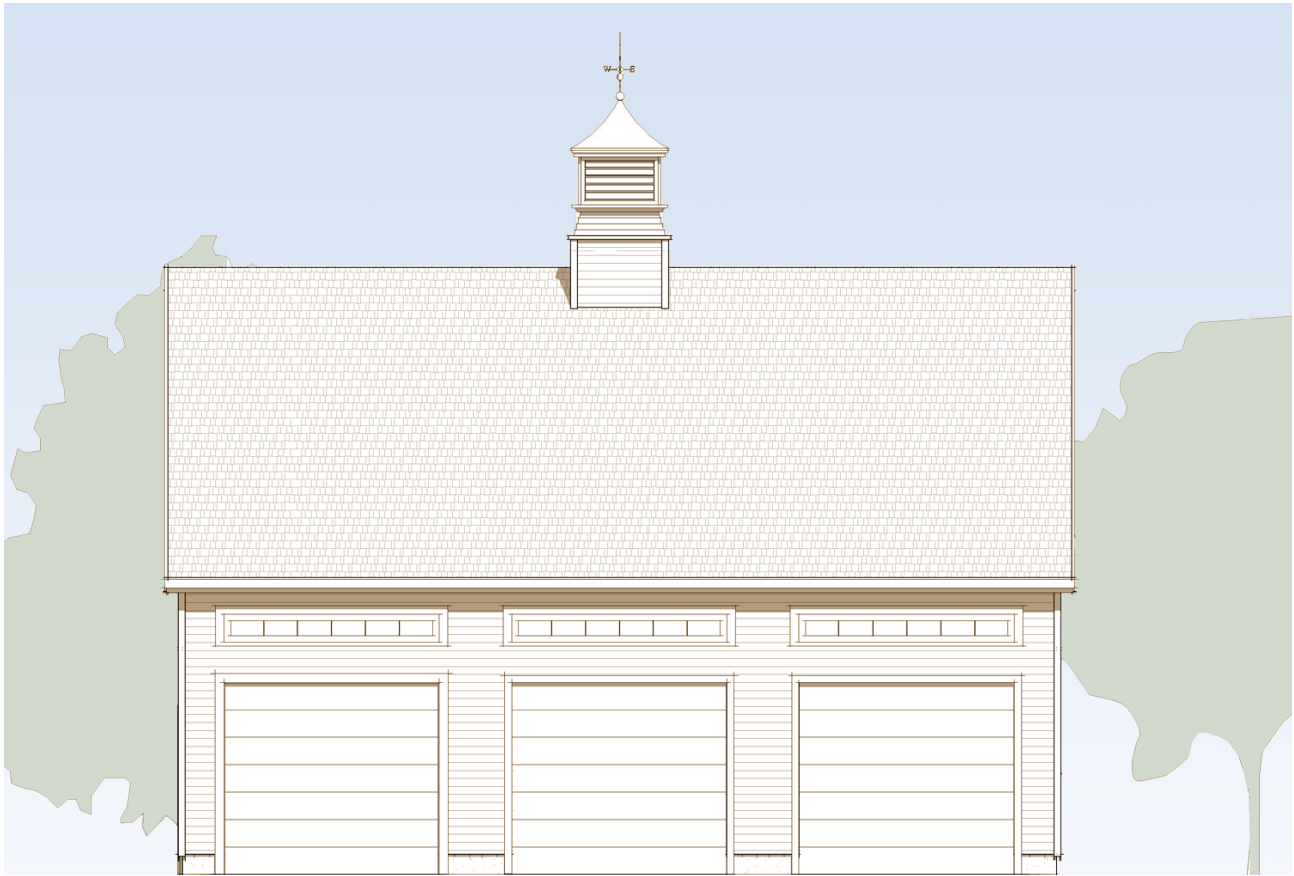
Whiteface Barn



INTERIOR
FRAME VIEW



Whiteface Barn



FRONT ELEVATION



Brooks
Post & Beam barns:
Where it all started.

603-654-3210 • 208 Pettingill Hill Road, Lyndeborough, NH

