

# Belmont

Enjoy the view



Originally built on the shores of a gorgeous New Hampshire lake, the Belmont was created to embrace a great view. Taking advantage of a sloping lot, the finished basement allows for three floors of views and a total of over 3,800 square feet of living space on a small lot.

Even before that future basement expansion, this plan offers a finished 2,395 square feet of light and spaciousness. The cathedral ceiling over an open-plan kitchen and great room means the great outdoors are in view whether you're cooking, dining or reading in front of the fire.



[www.brookspostandbeam.com](http://www.brookspostandbeam.com)

# Belmont

## The Rooms

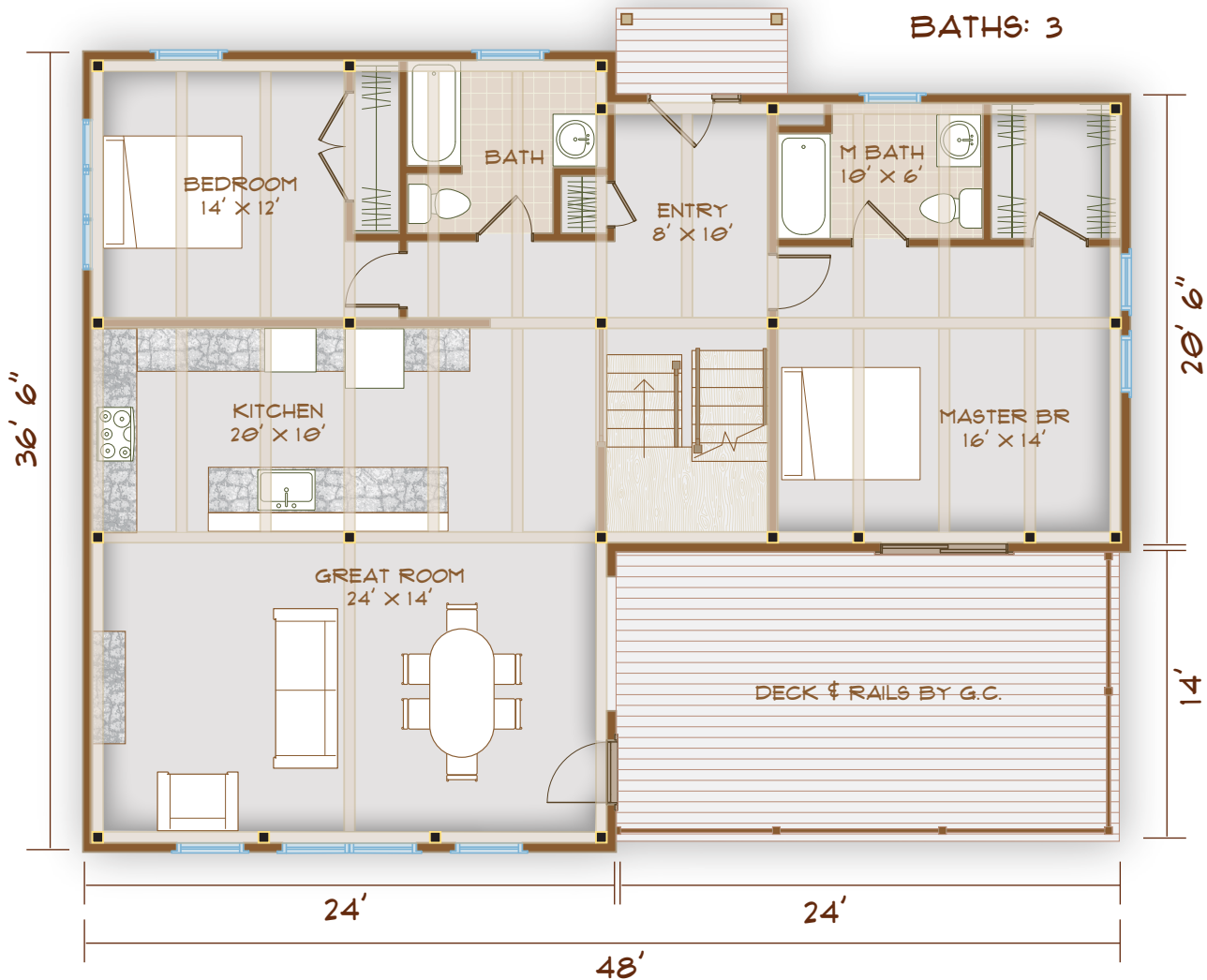
A first-floor master with its deck showcasing the view offers accessible living in this home for many years to come. A second first-floor bedroom – which could double as a study or craft room – means single-floor

living is comfortably possible. But why stop there? The second floor features another bedroom and 3/4 bath, open loft, and office space.

MAIN FLOOR  
1430 SF

TOTAL SQUARE  
FOOTAGE  
2395  
(EXCLUDING BASEMENT)

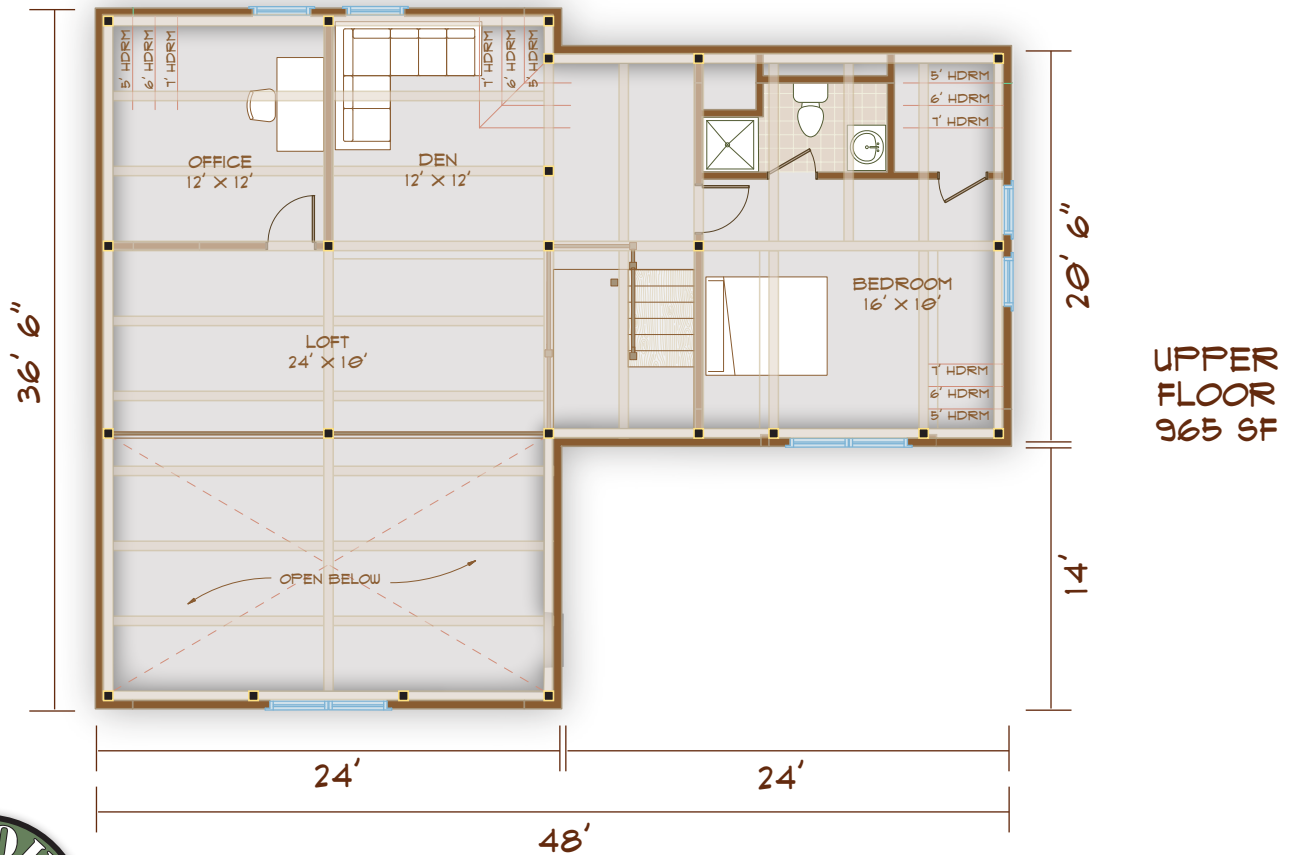
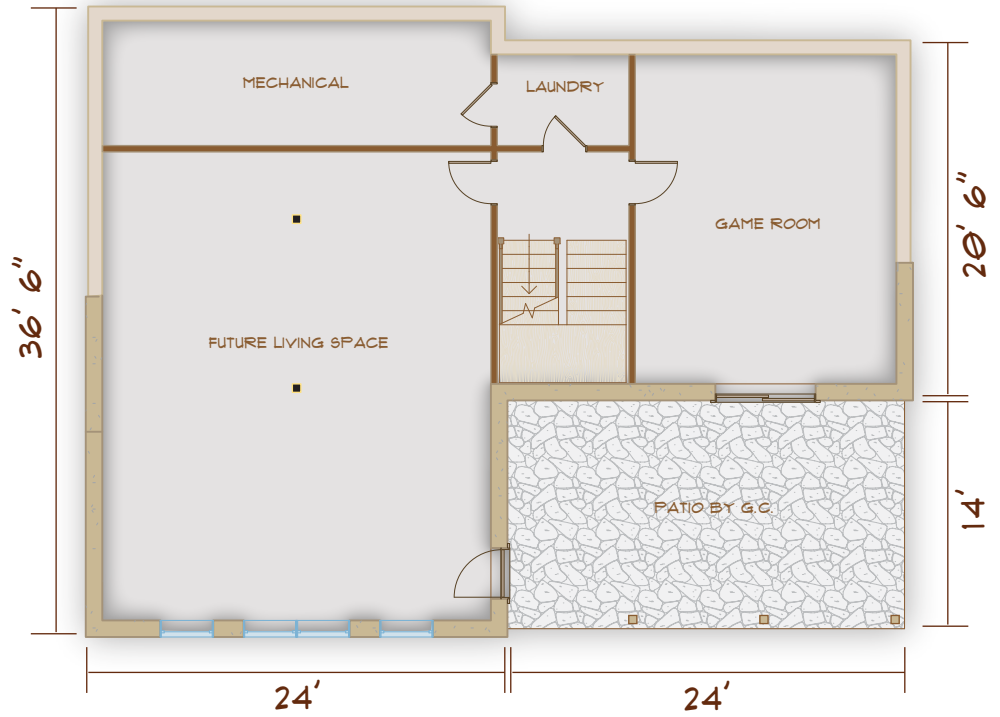
BEDROOMS: 3  
BATHS: 3



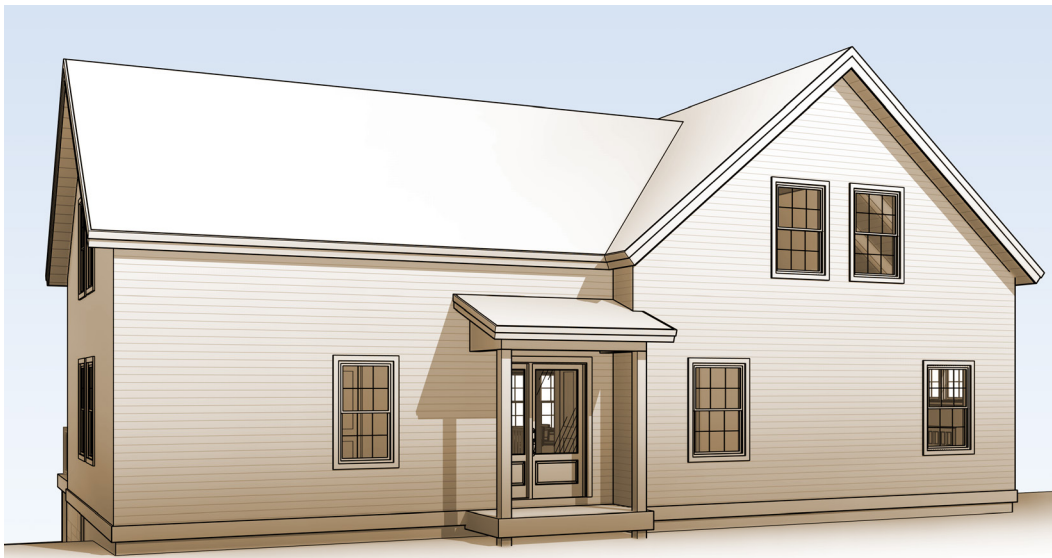
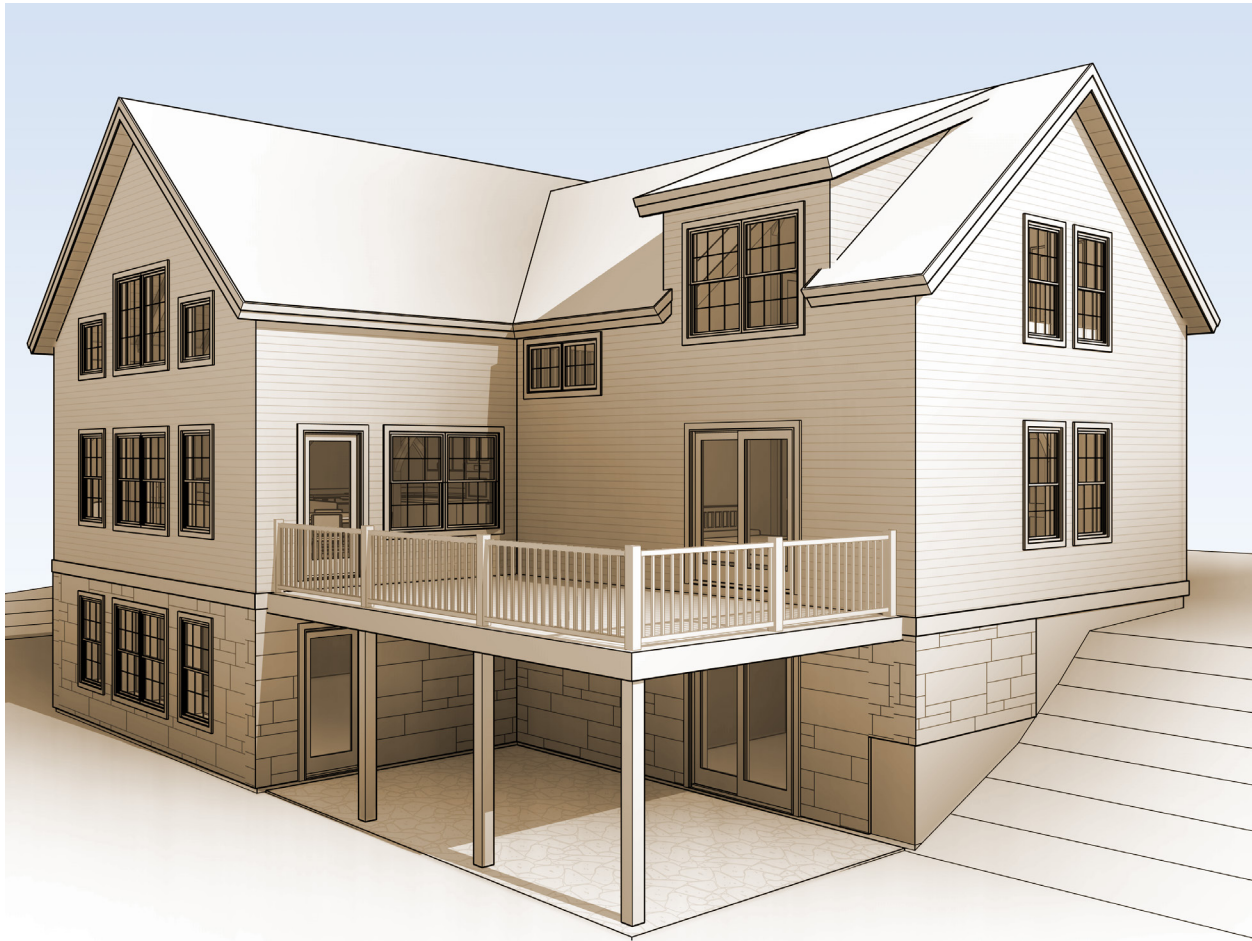
# Belmont

And that basement? Finish it off with a game room, an entertainment area, and a laundry room. Or, create an inviting guest space with a patio and its own views.

**BASEMENT**  
1430 SF



# Belmont



FRONT VIEW

**Belmont:**  
Enjoy the view

603-654-3210 • 208 Pettingill Hill Road, Lyndeborough, NH

