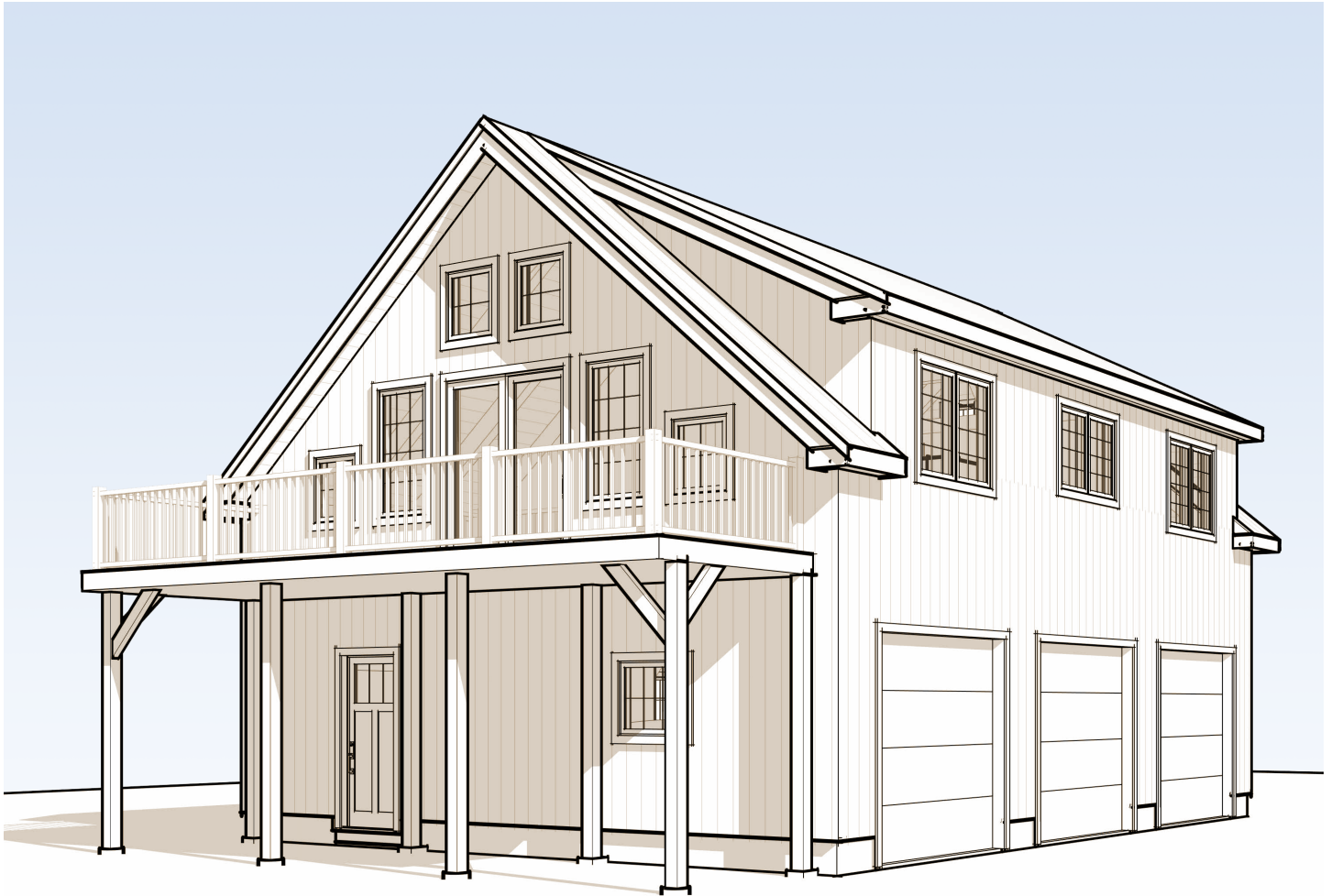


Kittery Carriage House

All in one



Garage? What garage? This pretty carriage house gives off strong “home” vibes; it’s only when the roomy, three-bay garage that is part and parcel with this plan comes into sight that we realize there’s space for cars, boats, maybe a tractor and building materials just downstairs!

Use the Kittery as a home away from home, or add it to an existing property to host guests and dramatically expand storage for vehicles and machinery. Brooks Carriage Houses are also a convenient and aesthetically pleasing way to live at the work site while you’re building your matching timber frame home.



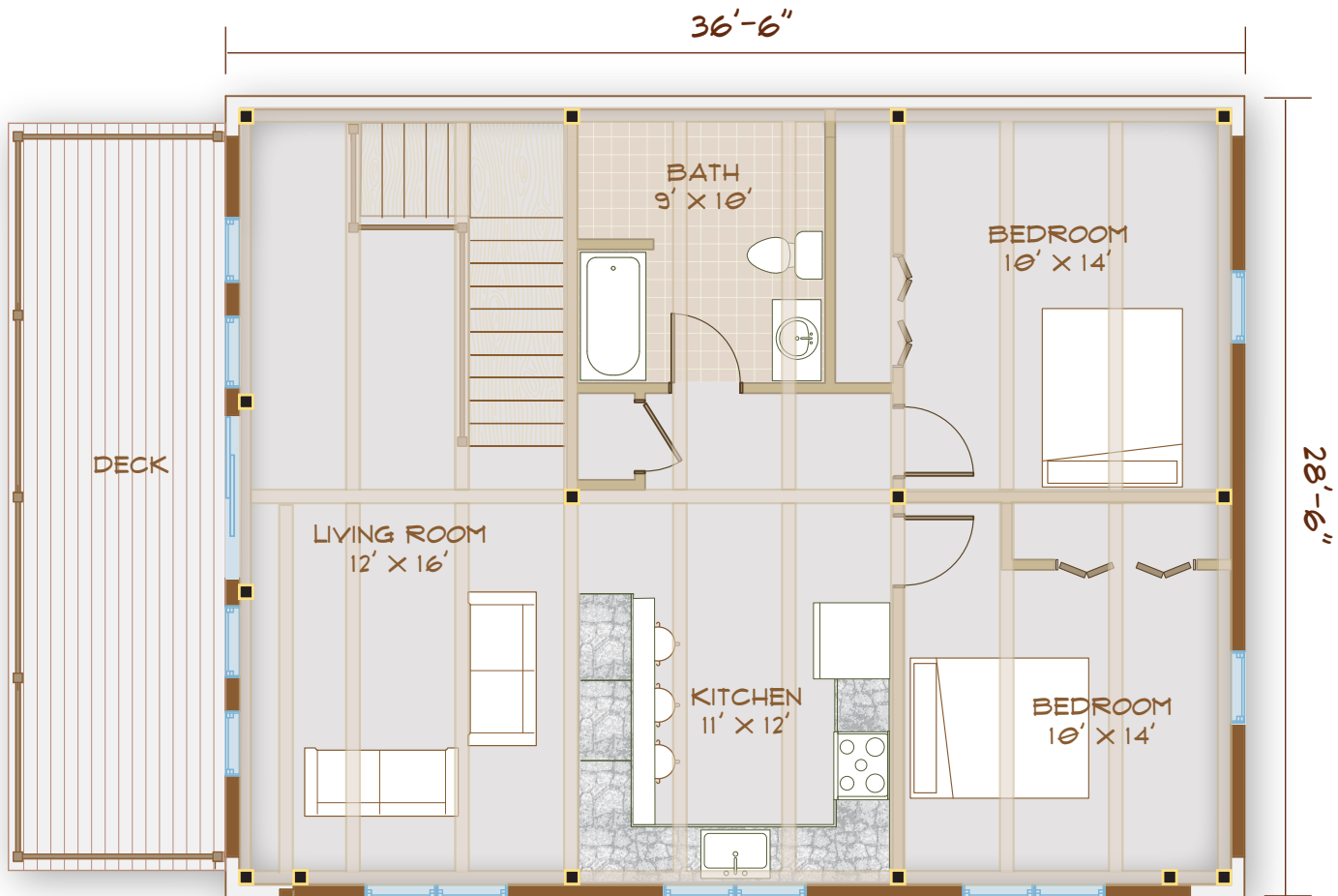
www.brookspostandbeam.com

Kittery Carriage House

The Rooms

Second-floor living is made all the better here with a dormer that helps banish the dark. The floor plan itself is simple and low-maintenance, perfect for short weekend visits and after long workdays:

An open-plan kitchen and living room are the focal point, with two bedrooms of the same size a short walk from the couch – or after star-gazing on the deck.



2ND FLOOR
1040 SF

TOTAL HOUSE
2080 SF
(INCL. GARAGE)
BEDROOMS: 2
BATHS: 1

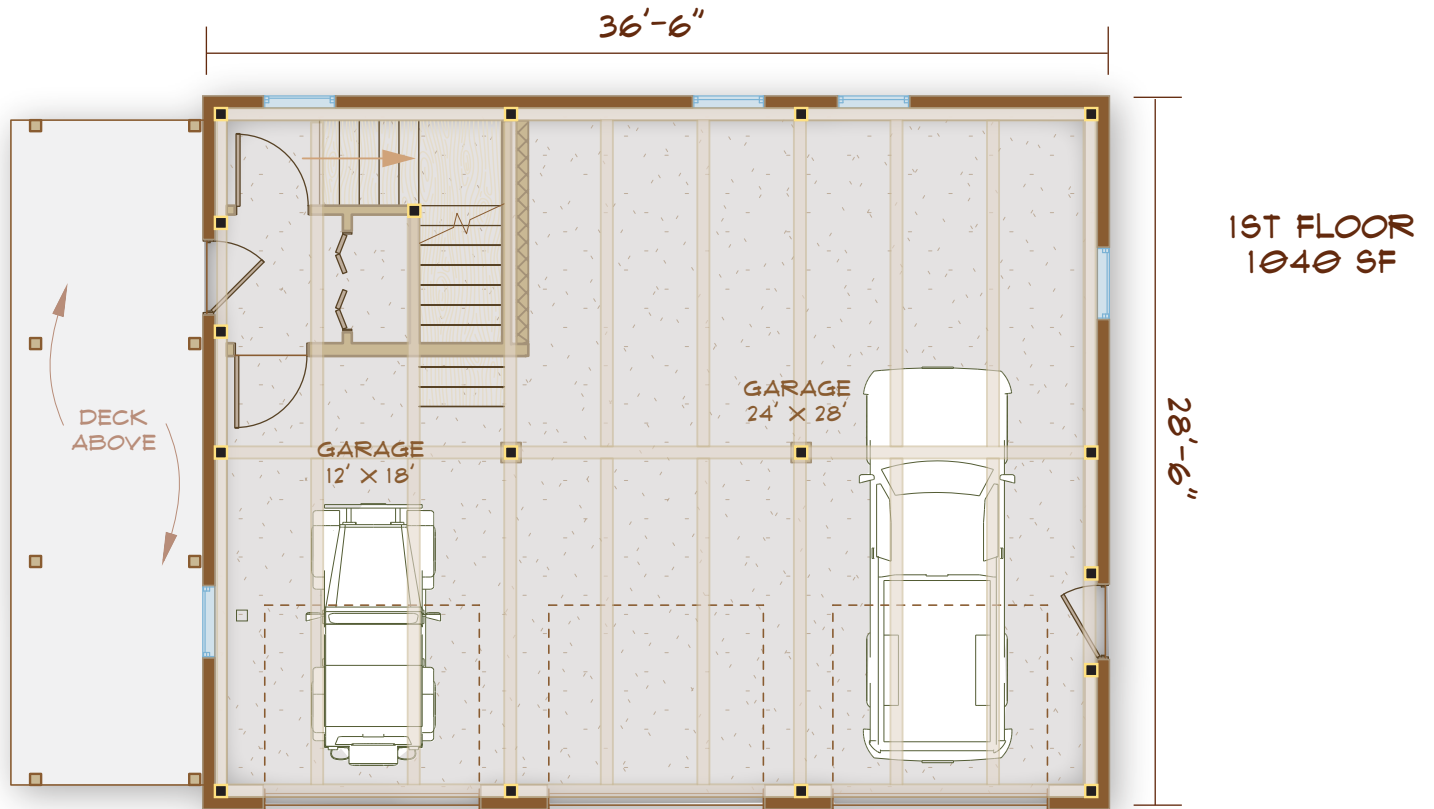
603-654-3210 • 208 Pettingill Hill Road, Lyndeborough, NH



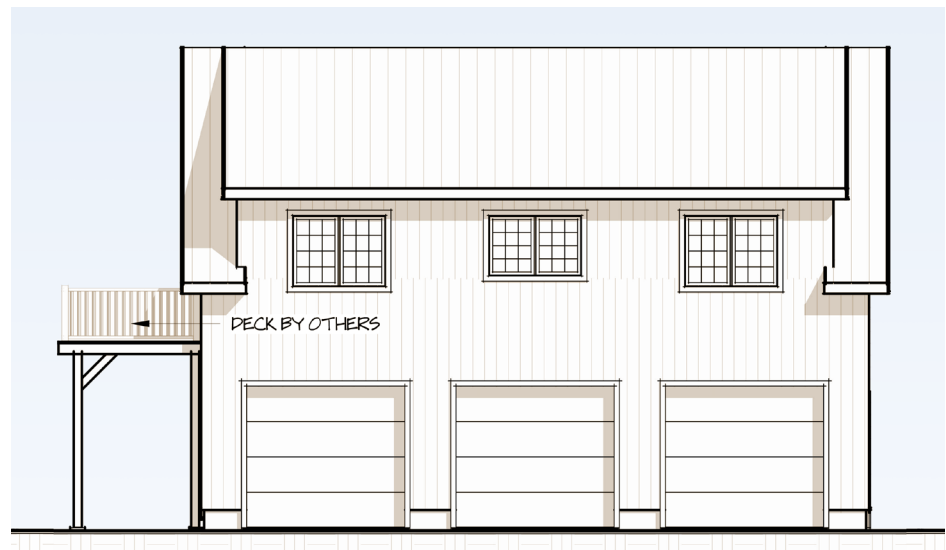
Kittery Carriage House

The three garage bays encompass nearly 900 square feet of parking and storage. A well-stocked workbench would fit handily at the back of

two of the bays, each 28 feet deep. At the end of the day, park your car in the third, handily located at the foot of the stairway to the living space.



GARAGE
ELEVATION

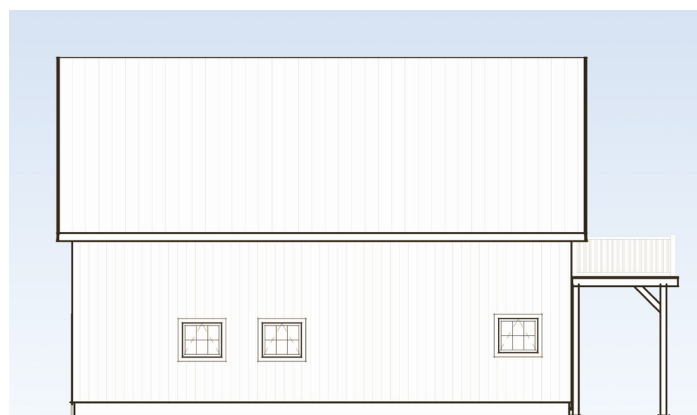


Kittery Carriage House



ENTRANCE ELEVATION

Kittery
Carriage House:
All in one



SIDE ELEVATION